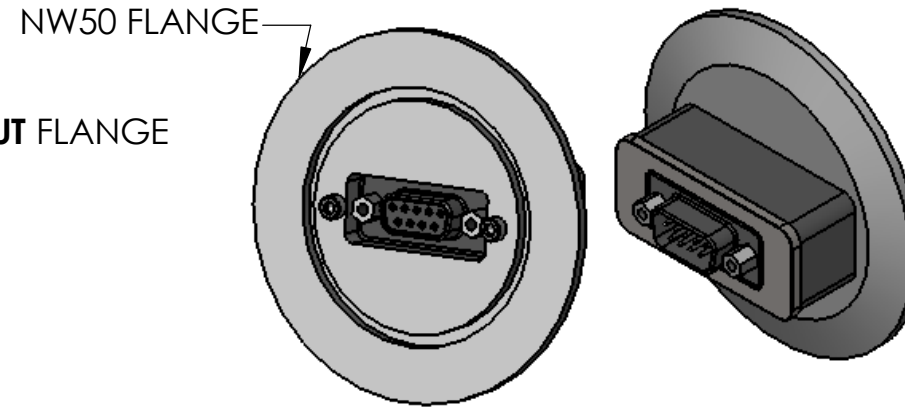
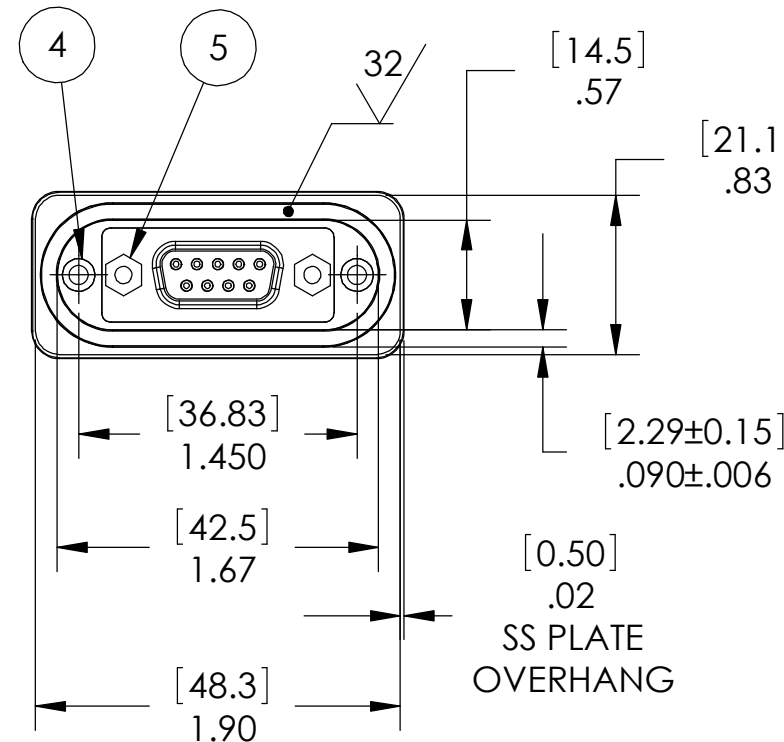
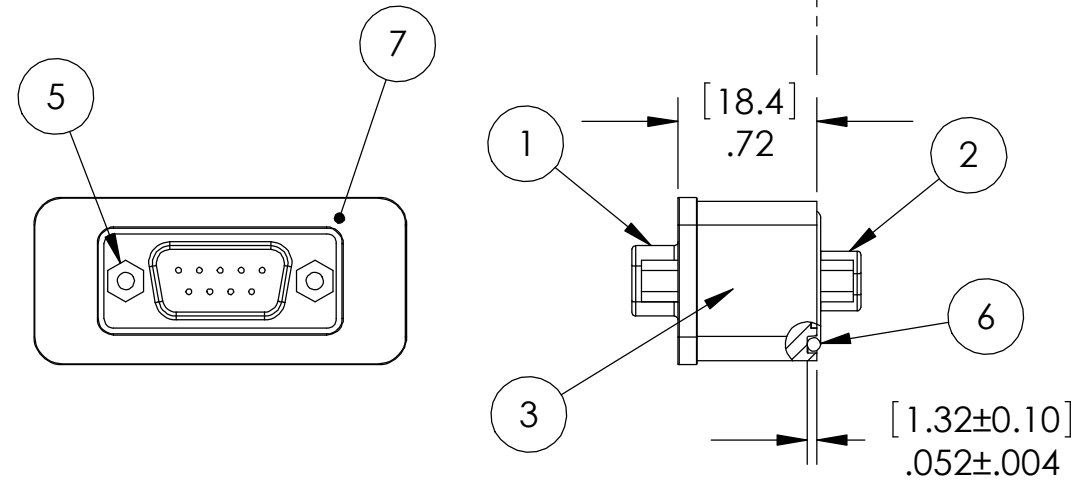


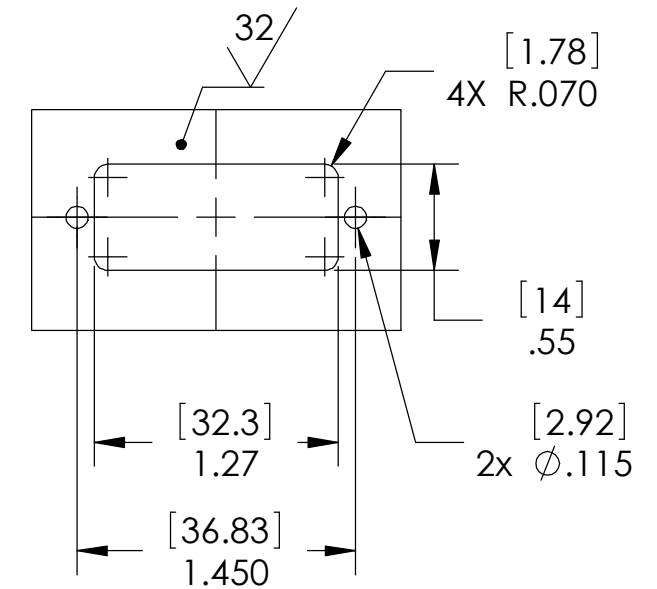
PAVE#**2748-1** SHIPPED MOUNTED TO A NW50 FLANGE
 PAVE#**2748** AS SHOWN BELOW **WITHOUT** FLANGE
 PAVE#**2748-R** IS REVERSED (SEE NOTE 8) **WITHOUT** FLANGE
 PAVE#**2748-2** IS PRESSURE TESTED ON VACUUM SIDE (SEE NOTE 1), **WITHOUT** FLANGE
 *EMI OPTION IS AVAILABLE FOR ALL OF THE ABOVE, SEE NOTE 9



ATMOSPHERE | VACUUM/PRESSURE
 SEE NOTE 1



SP30/13 INSTALLATION PORT



NOTES:

1. HE LEAK TEST @ 1 ATM. 1X10⁻⁶ CC/SEC OR LESS. FOR 2748-2 ONLY: LEAK TEST @ 60 PSI, NO BUBBLES 30 SECONDS MINIMUM. A GREEN PAINT DOT INDICATES THE PART HAS PASSED THE LEAK TEST.
2. HYPOT 630 VDC 500 MEGOHMS MINIMUM 0.01 SECOND MINIMUM WIRE TO WIRE AND CONNECTOR SHELLS WITH MATING CONNECTORS.
3. CONTINUITY TEST < 0.5 Ohm PIN TO SOCKET WITH MATING CONNECTORS.
4. ALCOHOL OR FOMBLIN YVAC 3 MAY BE USED TO LUBRICATE O-RINGS FOR VACUUM HELIUM LEAK TESTING.
5. ALL TESTS ARE PERFORMED AT ROOM TEMPERATURE.
6. ALL PARTS MUST PASS ALL TESTS.
7. NO COSMETIC SURFACE VOIDS ARE ACCEPTABLE ON O-RING SEALING SURFACES, COSMETIC SURFACE VOIDS SMALLER THAN $\phi 0.035$ [0.89] ARE ACCEPTABLE ON ALL OTHER SURFACES.
8. 2748-R IS REVERSED WITH PINS ON THE VACUUM SIDE AND SOCKETS ON THE ATMOSPHERE SIDE.
9. ADDING "EMI" TO THE PAVE PART NUMBER AND ORDER CODE INDICATES AN ELECTRICAL CONNECTION BETWEEN THE SHELLS OF ITEMS 1 & 2.
10. REF-OPERATING TEMPERATURE -20 °C TO 105 °C.
11. DIMENSIONS ARE INCHES [millimeters].

7	1	3461	PLATE TOP SS 9 PIN DSUB
6	1	-026 VITON	O-RING -026 VITON 75
5	4	JACKPOST 4-40	"P" STYLE 4-40 UNC
4	2	YARDLEY#440A5-8	THREADED INSERT SS
3	1	PAVE-Seal 150	EPOXY BLACK
2	1	171-009-203L001	RCPT D-SUB 9 SOCKET PBT INSULATOR, NICKEL PLATED STEEL SHELL, GOLD PLATED BRASS SOCKETS
1	1	171-009-103L001	PLUG D-SUB 9 PIN PBT INSULATOR, NICKEL PLATED STEEL SHELL, GOLD PLATED BRASS PINS
ITEM	QTY	PART NUMBER	DESCRIPTION

2751 Thunderhawk Court
 Dayton, OH 45414-3445
 U.S.A.
 tel (937) 890-1100
 fax (937) 8905165
 www.pavetechnologyco.com

PAVE technology co.

DESCRIPTION
 SP30/13-E-150-9-20-DSUB-DSUB

PART NUMBER
2748

MATERIAL NOTED

REVISION LEVEL
 J

PROJECTION

ALL DIMENSIONS AND TOLERANCES APPLY TO FINISHED PART IN INCHES.
 ALLOWABLE TOLERANCES UNLESS SPECIFIED OTHERWISE: NONE ±0.5
 X.X DECIMAL ±0.1 X.XX DECIMAL ±0.02 X.XXX DECIMAL ±0.005
 ANGLES ±1 DEGREE SURFACE FINISH 128 microinch RMS