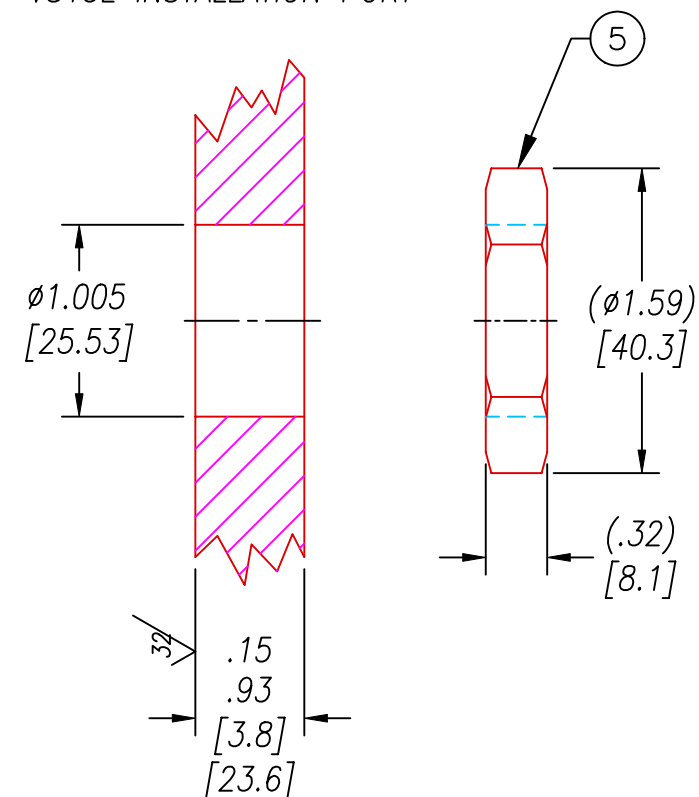


VS15L INSTALLATION PORT



NOTES:

1. HE LEAK TEST @1 ATM. 1×10^{-6} CC/S OR LESS. A GREEN PAINT DOT INDICATES THE PART HAS PASSED THE TEST.
2. HIPOT 630 VDC 500 MΩ .01 SEC MINIMUM, WIRE TO WIRE & HOUSING.
3. ALL TESTS ARE PERFORMED AT ROOM TEMPERATURE.
4. ALL PARTS MUST PASS ALL TESTS.
5. WIRE POSITIONING IS APPROXIMATE & VARIABLE.
6. DIMENSIONS ARE INCHES [millimeters].
7. COSMETIC SURFACE VOIDS NOT ON O-RING SEALING SURFACES ARE ACCEPTABLE BASED ON THE SEAL'S DIAMETER:
 $\leq .5$ [12.7] SEAL DIAMETER: $\phi .035$ [.89] MAX ALLOWED VOID SIZE
 $> .5$ [12.7] SEAL DIAMETER: $\phi .060$ [1.5] MAX ALLOWED VOID SIZE
8. REF-OPERATING TEMPERATURE RANGE -20°C TO 125°C .
9. PAVE-SEAL CAN BE A BI-DIRECTIONAL HERMETIC SEAL FOR VACUUM AND MOST PRESSURES. FOR PRESSURES ABOVE 150 PSI (10 BAR), CHECK WITH SALES ENGINEERING.
10. ALCOHOL OR FOMBLIN YVAC 3 MAY BE USED TO LUBRICATE O-RINGS FOR VACUUM HELIUM LEAK TESTING.

PART#	X	Y	ITEM 3	ITEM 3 DESCRIPTION
1602	48 [1219]	48 [1219]	ET20	CABLE T/C TYPE E 20AWG TEFLON
1602-1	72 [1829]	24 [610]	ET20	CABLE T/C TYPE E 20AWG TEFLON
1602-2	480 [12192]	300 [7620]	FF-E-20-SLE	CABLE T/C TYPE E #20 TEFLON FEP SLE

5	1	0183	NUT VS15-SS
4	1	-215 VITON	O-RING -215 VITON 75
3	9	SEE TABLE	SEE TABLE
2	A/R	PAVE-Seal 150	EPOXY BLACK
1	1	0161	HOUSING VS15L-SS
ITEM	QTY	PART#	DESCRIPTION

ALL DIMENSIONS AND TOLERANCES APPLY TO FINISHED PART IN INCHES
 ALLOWABLE TOLERANCES UNLESS SPECIFIED OTHERWISE: NONE +/-0.5
 .X DECIMAL +/- 0.1 .XX DECIMAL +/- 0.02 .XXX DECIMAL +/-0.005
 ANGLES +/- 1 DEG SURFACE FINISH 128 microinch RMS



DESCRIPTION	PAVE-Seal@ Cable Harnesses	*SEE TABLE
	VS15L-SS-150-9P-ET20-X-Y	
PART NUMBER	*SEE TABLE	
	1602*	
REVISION LEVEL	E	
PROJECTION		