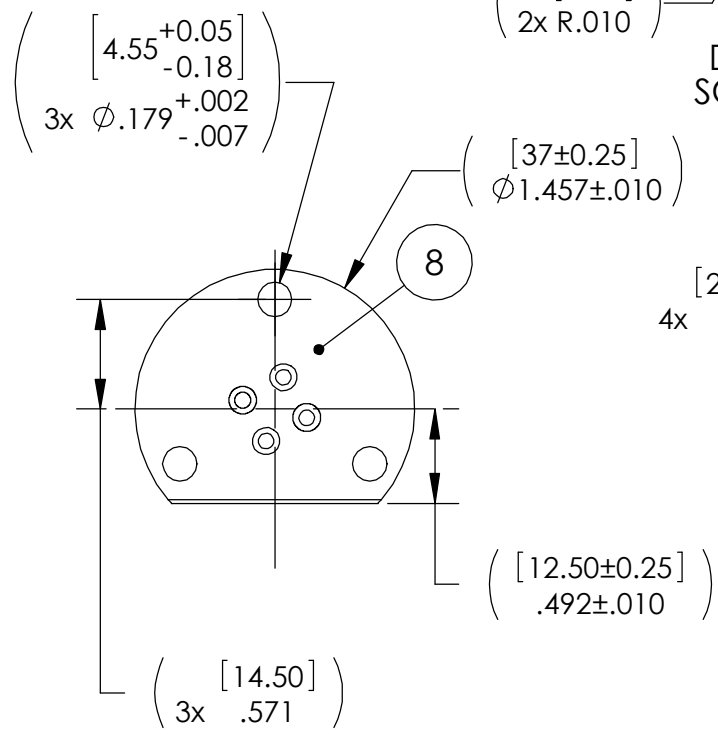
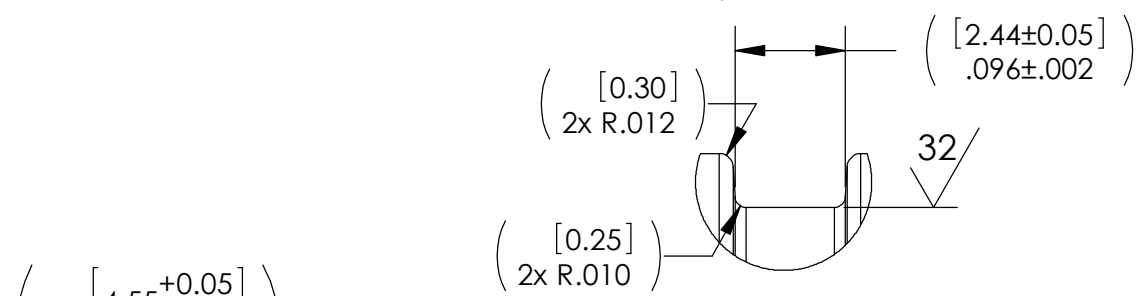
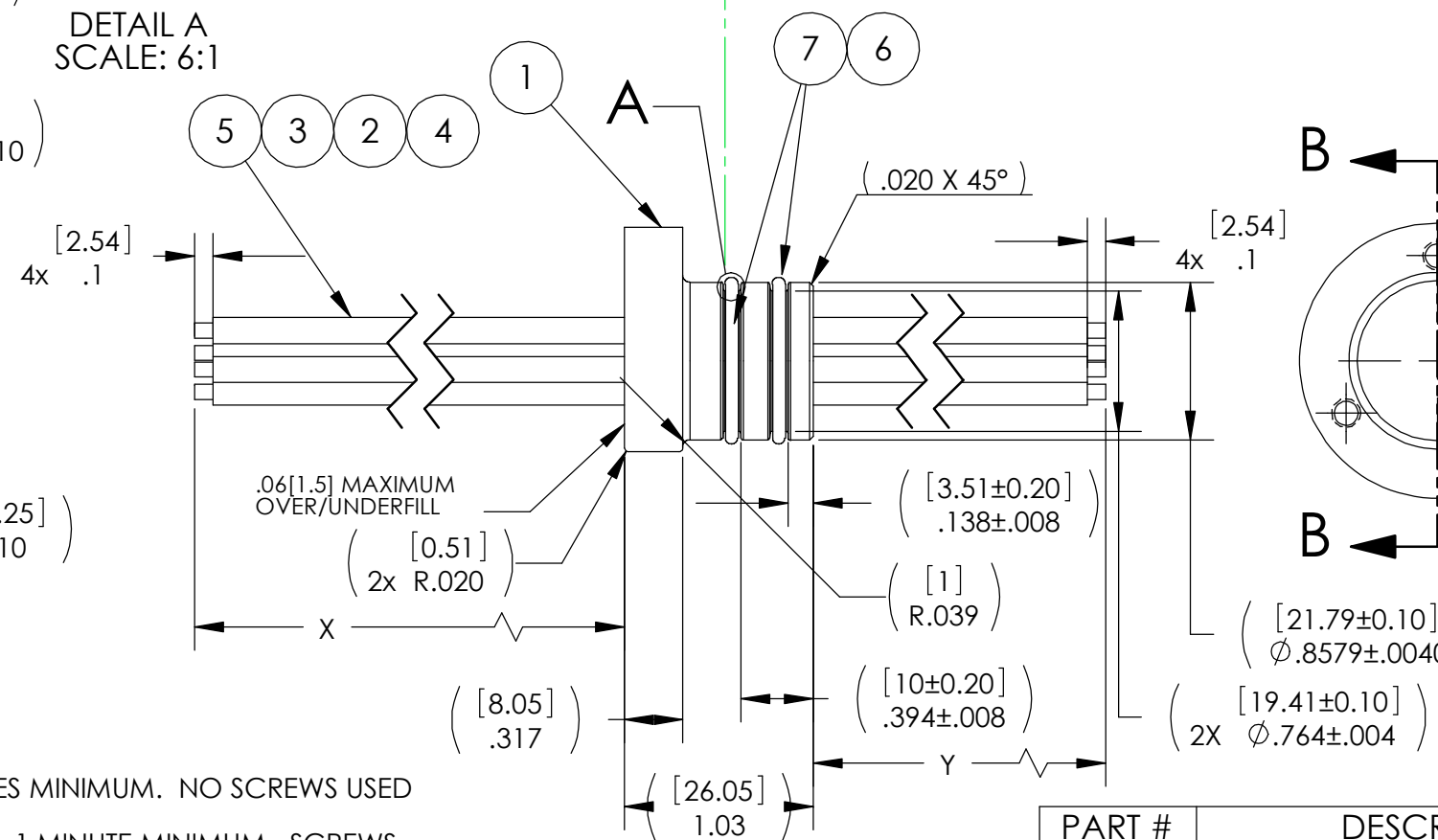


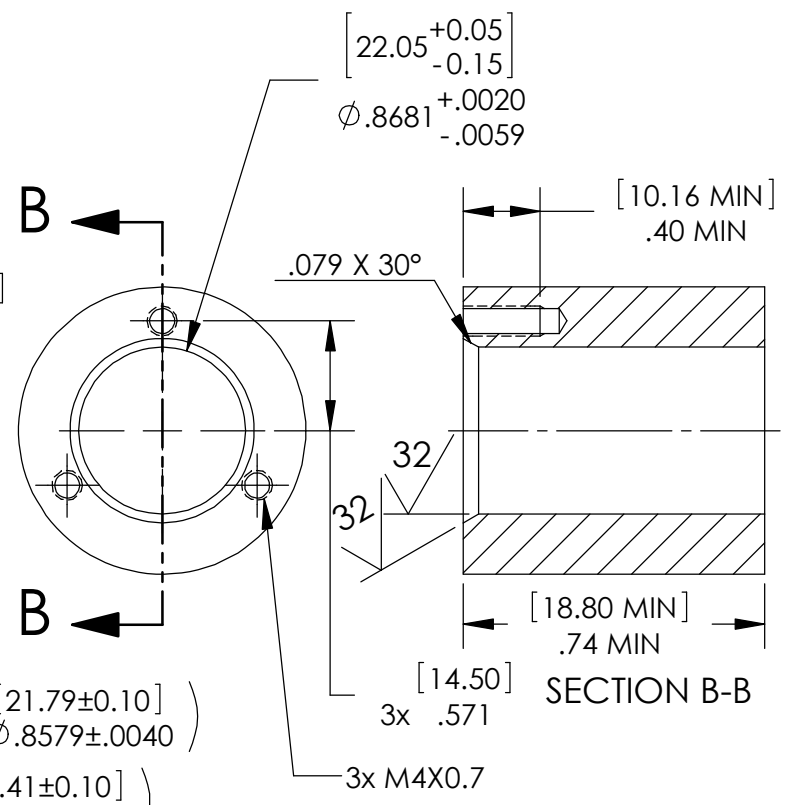
O-RING NOT SHOWN  
DIMENSIONS EQUAL FOR EACH GROOVE



PRESSURE      ATMOSPHERE



SP14 INSTALLATION PORT



PART #	DESCRIPTION	"X" MIN	"Y" MIN
4087	SPF14-E-150-4-GXL12-59-78.7	59 [1500]	78.7 [2000]
4087-1	SPF14-E-150-4-GXL12-32.9-14.2	32.9 [835]	14.2 [360]

NOTES:

- LEAK TEST: 315 PSI, NO BUBBLES 1.5 MINUTES MINIMUM. NO SCREWS USED DURING PRODUCTION TESTING.
- QUALIFICATION ONLY: 1563 PSI, NO BURST, 1 MINUTE MINIMUM. SCREWS USED DURING QUALIFICATION TEST.
- QUALIFICATION ONLY: HE LEAK TEST VACUUM 10X10<sup>-7</sup> CC/SEC OR LESS.
- HYPOT 630 VDC 500 MEGOHMS MINIMUM 0.01 SECOND MINIMUM WIRE TO WIRE.
- ALL TESTS ARE PERFORMED AT ROOM TEMPERATURE.
- ALL PARTS MUST PASS ALL TESTS.
- WIRE POSITIONING IS APPROXIMATE & VARIABLE.
- COSMETIC SURFACE VOIDS NOT ON O-RING SEALING SURFACES ARE ACCEPTABLE BASED ON THE SEAL'S DIAMETER:  
 <= .5 [12.7] SEAL DIAMETER: Ø .035 [.89] MAX ALLOWED VOID SIZE  
 > .5 [12.7] SEAL DIAMETER: Ø 0.060 [1.5] MAX ALLOWED VOID SIZE
- DIMENSION IS OVER-ALL-LENGTH EXCLUDING OVERFILL ON ATMOSPHERE SIDE OF HOUSING.
- REF-OPERATING TEMPERATURE -40°C TO 125°C.
- REF-PARTS ARE DEFLASHED ON PARTING LINE +0.005 [.13] MAXIMUM.
- DIMENSIONS ARE INCHES[MILLIMETERS].
- PAVE-SEAL CAN BE A BI-DIRECTIONAL HERMETIC SEAL FOR VACUUM AND MOST PRESSURES. FOR PRESSURES ABOVE 150 PSI (10 BAR), CHECK WITH SALES ENGINEERING.

ITEM	QTY	PART NUMBER	DESCRIPTION
8	A/R	PAVE-Seal 150	EPOXY BLACK
7	A/R	PARKER O-LUBE	LUBRICANT O-RING BARIUM BASED
6	2	-018 VITON LT	O-RING -018 VITON LOW-TEMP 75
5	1	GXL12 BLUE	WIRE 12GXL BARE COPPER 19/#25
4	1	GXL12 BLK	WIRE 12GXL BARE COPPER 19/#25
3	1	GXL12 PINKBLK	WIRE 12GXL BARE COPPER 19/#25
2	1	GXL12 BRNWHT	WIRE 12GXL BARE COPPER 19/#25
1	1	3402	HOUSING SPF14 EPOXY

**PAVE technology co.**  
 2751 Thunderhawk Court  
 Dayton, OH 45414-3445  
 U.S.A.  
 tel (937) 890-1100  
 fax (937) 8905165  
 www.pavetechnologyco.com

DESCRIPTION	SEE TABLE		
PART NUMBER	4087	MATERIAL	NOTED
REVISION LEVEL	B	PROJECTION	

ALL DIMENSIONS AND TOLERANCES APPLY TO FINISHED PART IN INCHES.  
 ALLOWABLE TOLERANCES UNLESS SPECIFIED OTHERWISE: NONE ±0.5  
 X.X DECIMAL ±0.1 X.XX DECIMAL ±0.02 X.XXX DECIMAL ±0.005  
 ANGLES ±1 DEGREE SURFACE FINISH 128 microinch RMS