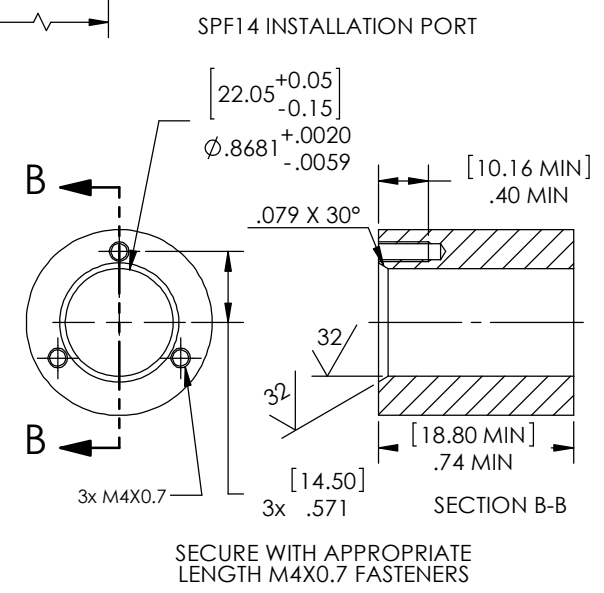


WIRE PINOUT TABLE				
ITEM #	CAVITY	WIRE COLOR	ITEM #	CAVITY
2 (TANK 1)	A	PINK/BLACK	5 (PUMP 1)	A
2 (TANK 1)	B	BROWN/WHITE	5 (PUMP 1)	B
3 (TANK 2)	A	BLUE	5 (PUMP 2)	A
3 (TANK 2)	B	BLACK	5 (PUMP 2)	B



- NOTES:
1. HYPOT 630 VDC 500 MEGOHMS MINIMUM 0.01 SECOND MINIMUM WIRE TO WIRE WITH MATING CONNECTORS.
 2. ALL TESTS ARE PERFORMED AT ROOM TEMPERATURE.
 3. ALL PARTS MUST PASS ALL TESTS.
 4. REFERENCE PAVE DRAWING# 4087 FOR COMPLETE GROMMET ASSEMBLY DETAILS.
 5. THIS HARNESS IS FOR THE ENGINE COMPARTMENT AND VEHICLE EXTERIOR APPLICATIONS.
 6. PART IS TO BE FREE OF BURRS, FLASH AND SHARP EDGES THAT MAY AFFECT THE FUNCTION, SAFE HANDLING, INSTALLATION OR REMOVAL OF THE PART.
 7. PART IS TO BE LABELED WITH PART NUMBER, PART DESCRIPTION AND DATE OF MANUFACTURE.
 8. ASSEMBLY SHALL BE IN ACCORDANCE WITH SPECIFICATION ES-F65B-14A121-AA (REV J).
 9. ALL TAPE MUST COMPLY WITH ES-AC3T-AA (C10-00).
 10. ALL WIRING UNLESS OTHERWISE NOTED IS TO BE COVERED WITH CONVOLUTE.
 11. BACK TAPE AROUND WIRES WITHIN THE LOOM AND SECURE AROUND THE LOOM TO KEEP LOOM FROM SHIFTING.
 12. ALL CONNECTOR END VIEWS ARE SHOWN AS VIEWED FROM THE MATING SURFACE.
 13. ALL CIRCUITS MUST HAVE CONTINUITY.
 14. SHORT CIRCUITS ARE NOT PERMISSIBLE.
 15. OPEN CIRCUITS ARE NOT PERMISSIBLE.
 16. CROSSED WIRES ARE NOT PERMISSIBLE.
 17. REF-OPERATING TEMPERATURE RANGE -40 °C TO 125 °C.
 18. DIMENSIONS ARE INCHES [millimeters].
 19. REF-4087-1 LEAK TEST: 315 PSI, NO BUBBLES 1.5 MINUTES MINIMUM. NO SCREWS USED DURING PRODUCTION LEAK TESTING, A GREEN PAINT DOT INDICATES THE PART HAS PASSED THE TEST.
 20. COSMETIC SURFACE VOIDS NOT ON O-RING SEALING SURFACES ARE ACCEPTABLE BASED ON THE SEAL'S DIAMETER:
 <= .5 [12.7] SEAL DIAMETER: Ø.035 [.89] MAX ALLOWED VOID SIZE
 > .5 [12.7] SEAL DIAMETER: Ø0.060 [1.5] MAX ALLOWED VOID SIZE

12	A/R	POLYKEN 277	HARNESS TAPE HIGH TEMPERATURE FR BLACK POLYKEN 277
11	1	THT-10-427-3	LABEL SELF-LAMINATING WHITE VINYL 1 INCH LONG
10	3	T18ROM4	CABLE TIE BLACK NYLON PA66 100mmX2.45mm 18lb TENSILE STRENGTH
9	2	LOOM 1/2 INCH	LOOM 1/2 INCH SPLIT NYLON BLACK
8	8	15324981	1 WAY CABLE SEAL METRI PACK INDIVIDUAL ROUND BLUE SILICONE OD 7.25mm CABLE DIAMETER RANGE 3.45-4.30mm
7	2	15332188	SECONDARY TPA LOCK BLUE METRI PACK
6	4	12129493	TANG TERMINAL FEMALE SEALED METRI PACK 280 SERIES TIN PLATED COPPER ALLOY CONDUCTOR RANGE 2.00-3.00mm2 CABLE DIAMETER RANGE 2.45-3.80mm
5	2	15332187	CONNECTOR ASSEMBLY DELPHI 2 WAY MEDIUM GRAY METRI PACK 280 SEALED FEMALE MAX CURRENT 30 AMPS
4	4	12124581	TANG TERMINAL FEMALE SEALED WEATHER PACK TIN PLATED COPPER ALLOY CONDUCTOR RANGE 2.50-3.00mm2 CABLE DIAMETER RANGE 3.96-3.96mm
3	1	12103784	CONNECTOR ASSEMBLY DELPHI 2 WAY LIGHT GRAY WEATHER PACK TOWER SEALED FEMALE MAX CURRENT 20 AMPS
2	1	12015792	CONNECTOR ASSEMBLY DELPHI 2 WAY BLACK WEATHER PACK TOWER SEALED FEMALE MAX CURRENT 20 AMPS
1	1	4087-1	SPF14-E-150-4-GXL12-32.9-14.2
ITEM	QTY	PART NUMBER	DESCRIPTION

PAVE technology co.
 2751 Thunderhawk Court
 Dayton, OH 45414-3445
 U.S.A.
 tel (937) 890-1100
 fax (937) 8905165
 www.pavetechnologyco.com

DESCRIPTION: PAVE-Seal® Cable Harnesses
 SPF14-E-150-4-GXL12-32.9T-14.2T

MATERIAL: NOTED

PART NUMBER: 4673

REVISION: D

PROJECTION:

FINISH

ALL DIMENSIONS AND TOLERANCES APPLY TO FINISHED PART IN INCHES.
 ALLOWABLE TOLERANCES UNLESS SPECIFIED OTHERWISE: NONE ±0.5
 X.X DECIMAL ±0.1 X.XX DECIMAL ±0.02 X.XXX DECIMAL ±0.005
 ANGLES ±1 DEGREE SURFACE FINISH 128 microinch RMS