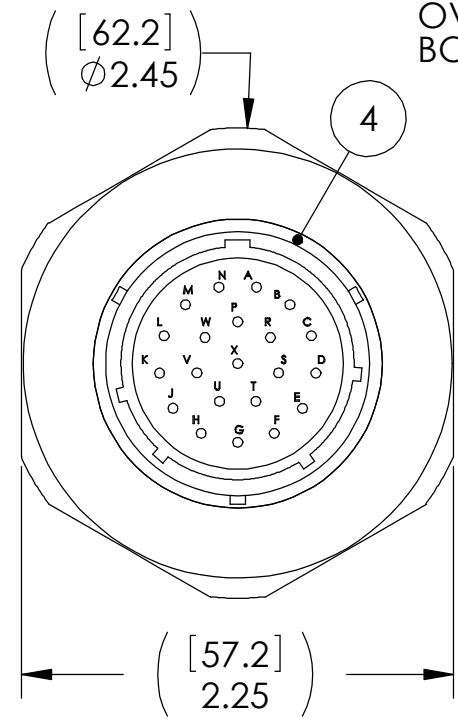
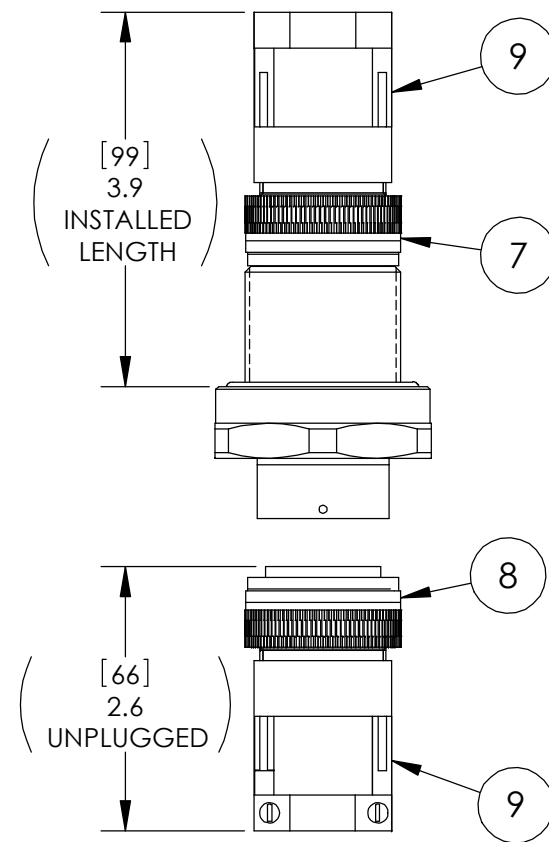
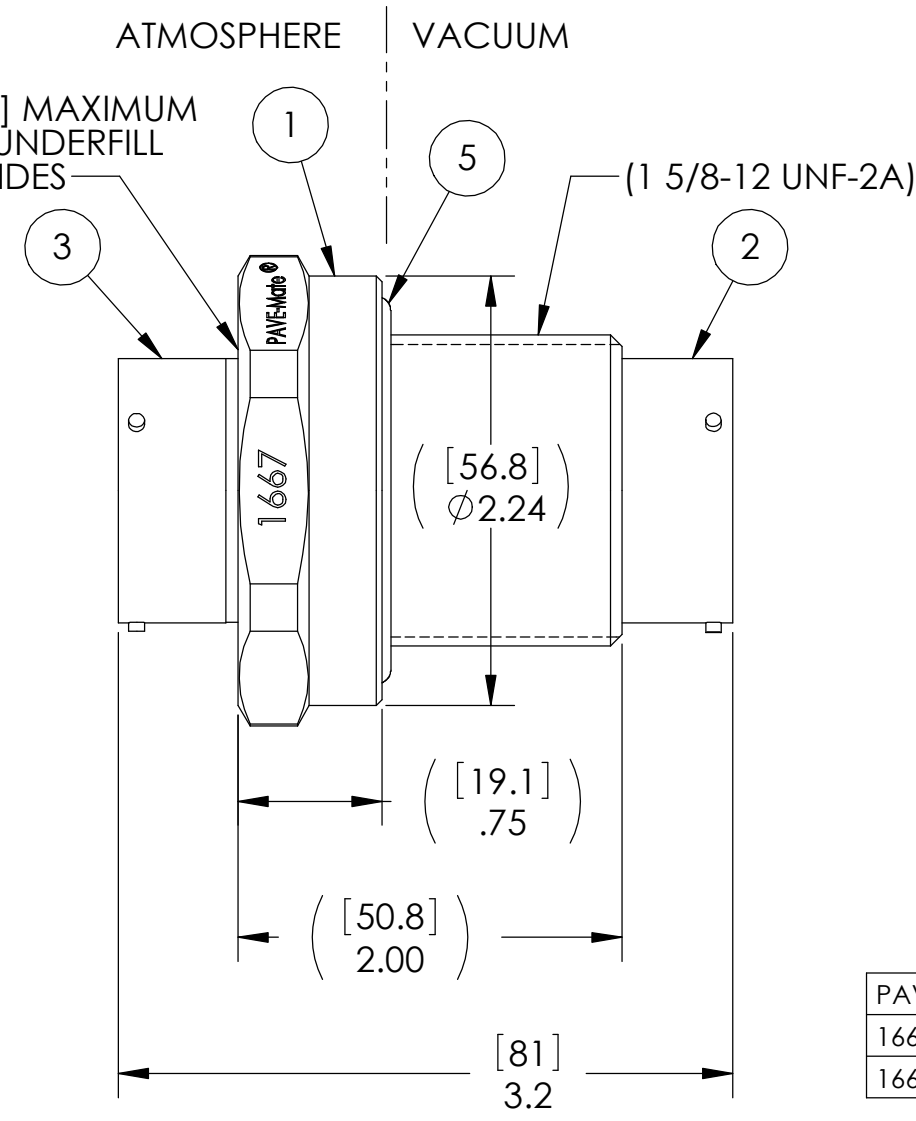


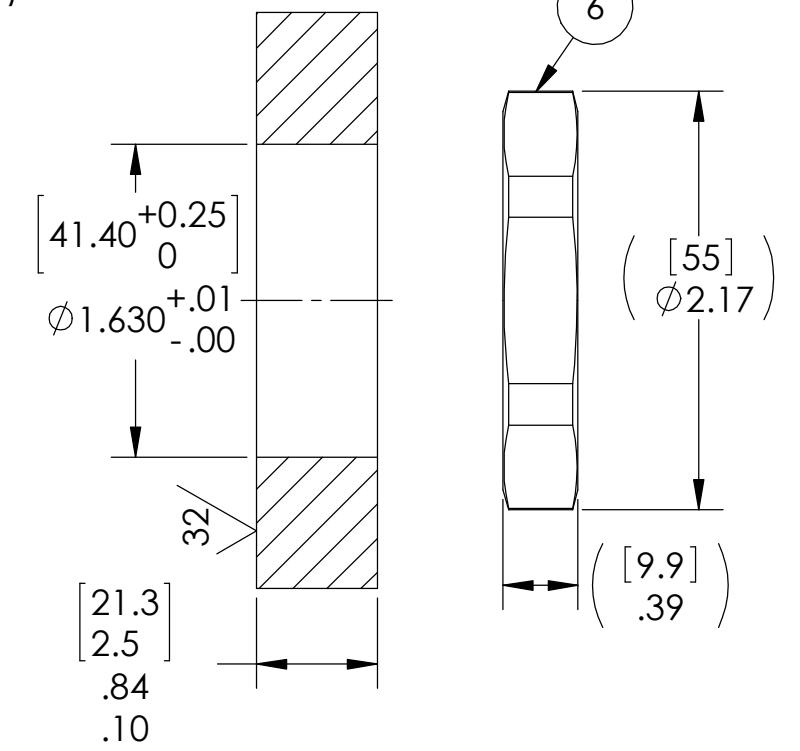
SCALE 1:2



.06 [1.5] MAXIMUM OVER/UNDERFILL BOTH SIDES



VS22 INSTALLATION PORT



PAVE#	ITEM 5	ITEM 5 DESCRIPTION	TEMPERATURE
1667	-224 VITON	O-RING -224 VITON 75	-20°C TO 125°C
1667-1	-224 BUTYL	O-RING -224 BUTYL 75	-60°C TO 121°C

NOTES:

- HE LEAK TEST @ 1 ATM. 1X10⁻⁸ CC/SEC OR LESS. A GREEN PAINT DOT INDICATES THE PART HAS PASSED THE TEST.
- HYPOT 1000 VDC 500 MEGOHMS MINIMUM 0.01 SECOND MINIMUM PIN TO PIN AND HOUSING WITH MATING CONNECTORS.
- CONTINUITY TEST < 0.5 Ohm PIN TO SOCKET WITH MATING CONNECTORS.
- ALCOHOL OR FOMBLIN YVAC 3 MAY BE USED TO LUBRICATE O-RINGS FOR VACUUM HELIUM LEAK TESTING.
- ALL TESTS ARE PERFORMED AT ROOM TEMPERATURE.
- ALL PARTS MUST PASS ALL TESTS.
- COSMETIC SURFACE VOIDS NOT ON O-RING SEALING SURFACES ARE ACCEPTABLE BASED ON THE SEAL'S DIAMETER:
 <= .5 [12.7] SEAL DIAMETER: ϕ .035 [89] MAX ALLOWED VOID SIZE
 > .5 [12.7] SEAL DIAMETER: ϕ .060 [1.5] MAX ALLOWED VOID SIZE
- ALTERNATE CLOCKING (W, X, Y, OR Z) IS INDICATED BY APPENDING THE APPROPRIATE LETTER TO THE PAVE PART NUMBER & ORDER CODE (E.G.: 1667X/VS22-SS-150-21-16-3112PSX). THE SAME LETTER IS THEN APPENDED TO ITEMS 2, 3, 7, & 8 (E.G.: SC3112E22-21PX).
- ADDING "NP" TO THE PAVE PART NUMBER & ORDER CODE INDICATE THAT ITEMS 7, 8, & 9 ARE NOT TO BE INCLUDED (NO PLUGS).
- REF-OPERATING TEMPERATURE RANGE SEE TABLE.
- DIMENSIONS ARE INCHES [millimeters].
- PAVE-SEAL CAN BE A BI-DIRECTIONAL HERMETIC SEAL FOR VACUUM AND MOST PRESSURES. FOR PRESSURES ABOVE 150 PSI (10 BAR), CHECK WITH SALES ENGINEERING.

ITEM	QTY	PART NUMBER	DESCRIPTION
9	2	M85049/52-1-22N	SEE NOTE 9 STRAIN RELIEF CLAMP SHELL SIZE 22, STRAIGHT, NON SELF-LOCKING, NICKEL PLATED ALUMINUM
8	1	MS3476L22-21S	SEE NOTE 9 PLUG 21 #16 GOLD PLATED COPPER ALLOY CRIMP SOCKETS, RIGID DIELECTRIC INSERT, SILICONE GROMMET, NICKEL PLATED ALUMINUM SHELL
7	1	AE776L22-21P513	SEE NOTE 9 PLUG 21 #16 GOLD PLATED COPPER ALLOY CRIMP PINS, EPOXY INSERT, NICKEL PLATED ALUMINUM SHELL
6	1	0199	NUT VS22-SS (316SS)
5	1	SEE TABLE	SEE TABLE
4	1	PAVE-Seal 150	EPOXY BLACK
3	1	SC3112E22-21P	RCPT 21 #16 GOLD PLATED COPPER ALLOY PINS, NEOPRENE INSERT, NICKEL PLATED ALUMINUM SHELL
2	1	AE771L22-21S460	RCPT 21 #16 GOLD PLATED COPPER ALLOY SOCKETS, EPOXY INSERT, NICKEL PLATED ALUMINUM SHELL
1	1	3388	HOUSING VS22-SS

PAVE technology co.

2751 Thunderhawk Court
Dayton, OH 45414-3445
U.S.A.
tel (937) 890-1100
fax (937) 8905165
www.pavetechnologyco.com

DESCRIPTION
VS22-SS-150-21-16-3112PS

PART NUMBER *SEE TABLE & NOTES 8 & 9
1667*

MATERIAL
NOTED

REVISION LEVEL
L

PROJECTION

ALL DIMENSIONS AND TOLERANCES APPLY TO FINISHED PART IN INCHES.
 ALLOWABLE TOLERANCES UNLESS SPECIFIED OTHERWISE: NONE ±0.5
 X.X DECIMAL ±0.1 X.XX DECIMAL ±0.02 X.XXX DECIMAL ±0.005
 ANGLES ±1 DEGREE SURFACE FINISH 128 microinch RMS