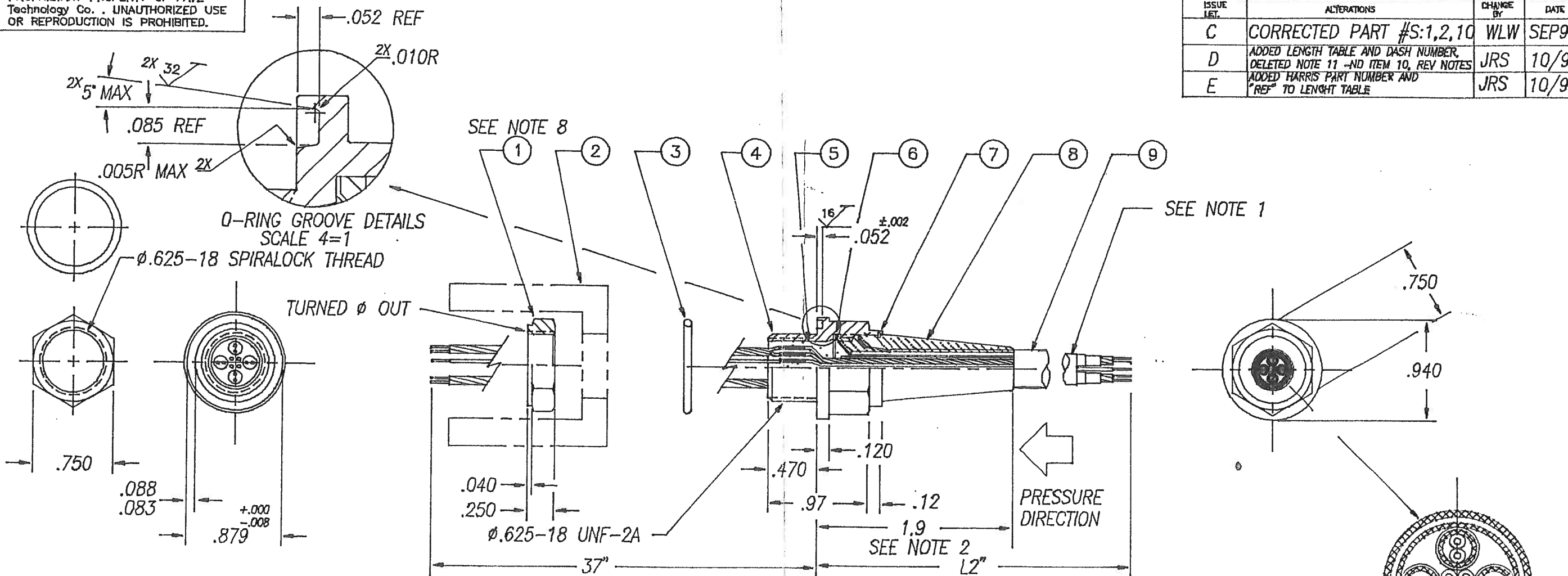


PROPRIETARY PROPERTY OF PAVE Technology Co. UNAUTHORIZED USE OR REPRODUCTION IS PROHIBITED.

ISSUE LET.	ALTERATIONS	CHANGE BY	DATE
C	CORRECTED PART #S:1,2,10	WLW	SEP92
D	ADDED LENGTH TABLE AND DASH NUMBER, DELETED NOTE 11 -NO ITEM 10, REV NOTES	JRS	10/93
E	ADDED HARRIS PART NUMBER AND "REF" TO LENGTH TABLE	JRS	10/93



- NOTES:
1. MEASURE SHIELD RESISTANCE BEFORE AND AFTER SOLDERING TO HOUSING. DIFFERENCE SHOULD NOT BE MORE THAN 2.5 MOHMS.
 2. SUBMERGE THIS IN SALT WATER & PERFORM HYPOT TEST AT 630 VDC WITH A MINIMUM OF 500 MOHMS BETWEEN LEADS & THE SHIELD.
 3. CHECK IMPEDANCE (TDR) ON 75 OHM TWISTED PAIRS
 4. LEAK TEST AT 15 PSI IN DIRECTION NOTED FOR 30 MINUTES.
 5. HELIUM LEAK TEST FOR 30 MINUTES LESS THAN 2×10^{-8} CC/S AIR EQUIVALENT.
 6. PULL TEST CABLE AT 50 LBS MIN FOR 1 MINUTE BEFORE LEAK & ELECTRICAL TESTS.
 7. CHECK CONTINUITY FOR 1 OHM MAX.
 8. TIGHTEN NUT TO 130 IN-LBS OF TORQUE.
 9. TEST ELECTRICAL ISOLATION OF ARMOR TO HOUSING (NO SHORTS) AT 5 VDC AND 40000 OHMS.
 10. THERMAL SHOCK CYCLE FROM -55°C TO 85°C FOR 1/2 HR MIN HOLD IN AIR & 5 MINUTE MAX TRANSFER TIME- 25 CYCLES.

LENGTH TABLE

DASH#	L1	L2	CABLE ASSY-REF
NONE	53"	15"	PAVE 0604
-01	61"	24"	PAVE 0812

OUTER ARMOR 34 AWG SS (.010 THK)
 OUTER JACKET POLYURETHANE .014
 INNER JACKET FEP .006
 BINDER EXPANDED PTFE .014?
 SHIELD 36 AWG AG PL CU .010
 EXTRUDED TPR TO ϕ .250
 CONDUCTORS 16X
 4X 24AWG 75 OHM TP
 4X 28 AWG

-004 CABLE SECTION
 SCALE 4=1

ITEM	QTY	PART NUMBER	DESCRIPTION
9	L1	-004 CABLE	CUSTOMER SUPPLIED
8	9g	CPC-19 A/B	URETHANE CASTING 70A DURO
7	1	VH-68-S02	RETAINING RING, SMALLEY 302 SS
6	1	0559	FERRULE SHIELD TO 0558 HSG
5	7g	PAVESEAL 150	EPOXY CASTING 90D
4	1	0558	HOUSING ϕ .625-18
3	1	2-018	O-RING, BUTYL PARKER B612-70 DURO
2	-	0561	TEST PORT, ϕ .625-18 LEAK
1	1	0560	NUT, ϕ .625-18 SPIRALOCK



PAVE Technology Co.
 Dayton, Ohio USA
 Pressure and Vacuum Electronics
 Custom Hermetic Connectors

TITLE
 -004 CABLE PASSTHRU

MATERIAL
 NOTED

DR. BY W. L. WOOD	APPROVED BY <i>[Signature]</i>	DRAWN FROM
DATE 23 JUL'92	SCALE 1=1 & NOTED	
PART NUMBER 0554	PAGE 1	REVISION E. <i>[Signature]</i>
	OF 1	PROJECTION ☉ □

FINISH

ALL DIMENSIONS AND TOLERANCES APPLY TO FINISHED PART.
 ALLOWABLE TOLERANCES UNLESS SPECIFIED OTHERWISE: NONE +/- .5
 .X DECIMAL +/- .1 .XX DECIMAL +/- .02 .XXX DECIMAL +/- .005
 ANGLES +/- 1 DEG SURFACE FINISH 128 microinch RMS