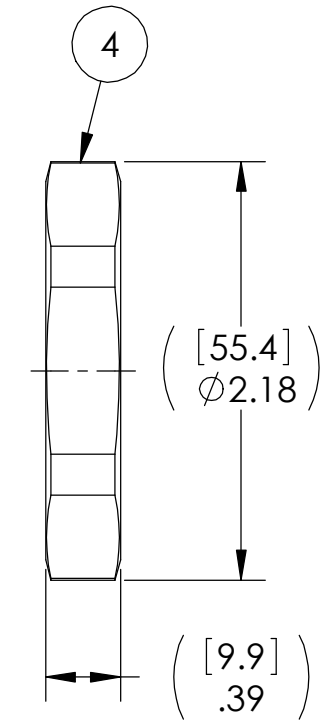
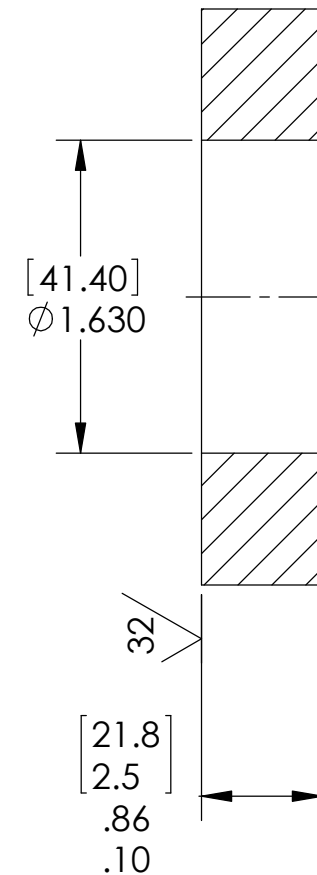


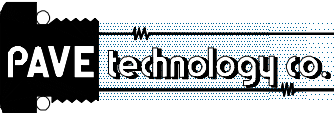
VS22 INSTALLATION PORT



NOTES:

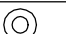

1. LEAK TEST:
2030: 500 PSI, NO N2 BUBBLES 2 MINUTES MINIMUM.
2030-1: HE LEAK TEST @ 1 ATM. 1×10^{-4} CC/SEC
(7.6×10^{-5} TORR-LITERS/SEC) OR LESS.
A GREEN PAINT DOT INDICATES THE PART HAS PASSED THE LEAK TEST.
2. ALL TESTS ARE PERFORMED AT ROOM TEMPERATURE.
3. ALL PARTS MUST PASS ALL TESTS.
4. COSMETIC SURFACE VOIDS NOT ON O-RING SEALING SURFACES ARE ACCEPTABLE BASED ON THE SEAL'S DIAMETER:
<= .5 [12.7] SEAL DIAMETER: ϕ .035 [.89] MAX ALLOWED VOID SIZE
> .5 [12.7] SEAL DIAMETER: ϕ .060 [1.5] MAX ALLOWED VOID SIZE
5. REF-OPERATING TEMPERATURE RANGE -20°C TO 125°C.
6. PAVE-SEAL CAN BE A BI-DIRECTIONAL HERMETIC SEAL FOR VACUUM AND MOST PRESSURES. FOR PRESSURES ABOVE 150 PSI (10 BAR), CHECK WITH SALES ENGINEERING.
7. DIMENSIONS ARE INCHES [millimeters].
8. ALCOHOL OR FOMBLIN YVAC 3 MAY BE USED TO LUBRICATE O-RINGS FOR VACUUM HELIUM LEAK TESTING.

4	1	0199	NUT VS22-SS
3	1	-224 VITON	O-RING -224 VITON 75
2	A/R	PAVE-Seal 150	EPOXY BLACK
1	1	0189/304SS	HOUSING VS22-SS
ITEM	QTY	PART NUMBER	DESCRIPTION


 2751 Thunderhawk Court
 Dayton, OH 45414-3445
 U.S.A.
 tel (937) 890-1100
 fax (937) 8905165
 www.pavetechnologyco.com

DESCRIPTION
 VS22-SS-150-PLUG

PART NUMBER *SEE NOTE 1
2030*

MATERIAL NOTED
 REVISION LEVEL D
 PROJECTION  

ALL DIMENSIONS AND TOLERANCES APPLY TO FINISHED PART IN INCHES.
 ALLOWABLE TOLERANCES UNLESS SPECIFIED OTHERWISE: NONE ±0.5
 X.X DECIMAL ±0.1 X.XX DECIMAL ±0.02 X.XXX DECIMAL ±0.005
 ANGLES ±1 DEGREE SURFACE FINISH 128 microinch RMS