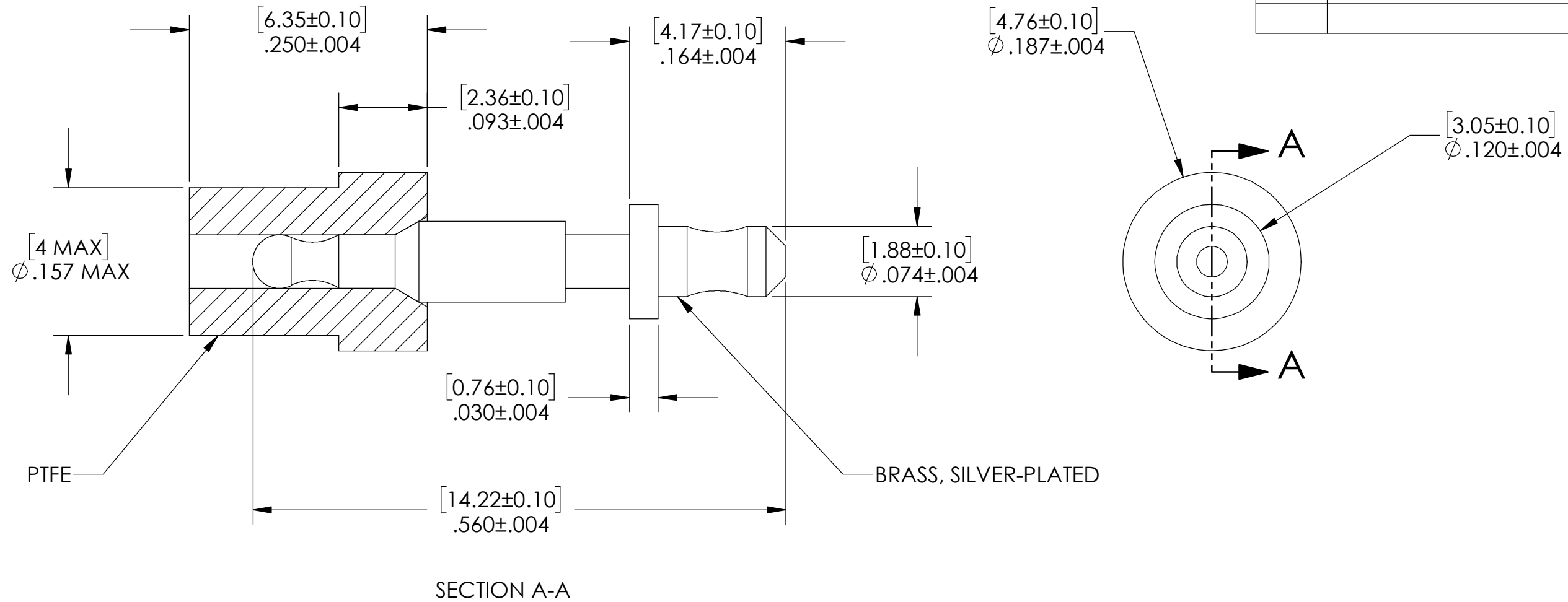
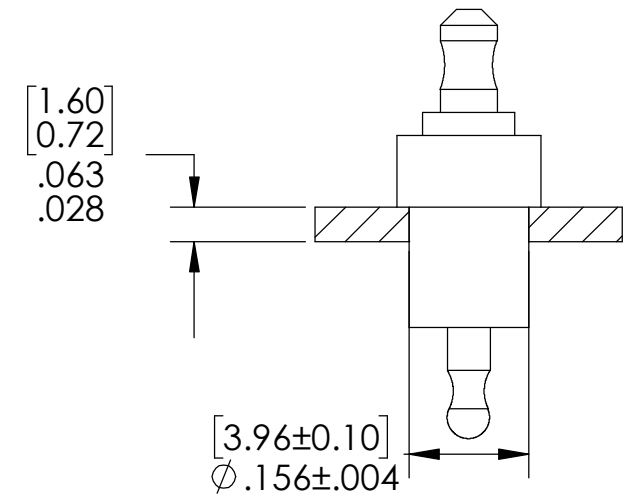


ISSUE LET.	ALTERATIONS	CHANGED BY	DATE



- NOTES:
1. REF-MAX OPERATING TEMPERATURE 200 °C.
  2. DIMENSIONS ARE INCHES [millimeters].



RECOMMENDED PCB DIMENSIONS  
SCALE 4:1

PAVE will meet the assembly and test specifications of the customer as documented on this assembly drawing. Any changes must be approved by PAVE.

**PAVE technology co.** 2751 Thunderhawk Court  
Dayton, OH 45414-3445  
U.S.A.  
tel (937) 890-1100  
fax (937) 8905165  
www.pavetechnologyco.com

DESCRIPTION PAVE-Seal® Cable Harnesses  
FEED THROUGH INSULATOR 5KV

MATERIAL NOTED

DR. BY AJH	APPROVED BY	DRAWN FROM WIDKOR
------------	-------------	-------------------

CH'D BY	DATE 21 JAN 19	SCALE 8:1
---------	----------------	-----------

PART NUMBER 5159	1	REVISION LEVEL -
	1	PROJECTION

FINISH ALL DIMENSIONS AND TOLERANCES APPLY TO FINISHED PART IN INCHES.  
ALLOWABLE TOLERANCES UNLESS SPECIFIED OTHERWISE: NONE ±0.5  
X.X DECIMAL ±0.1 X.XX DECIMAL ±0.02 X.XXX DECIMAL ±0.005  
ANGLES ±1 DEGREE SURFACE FINISH 128 microinch RMS