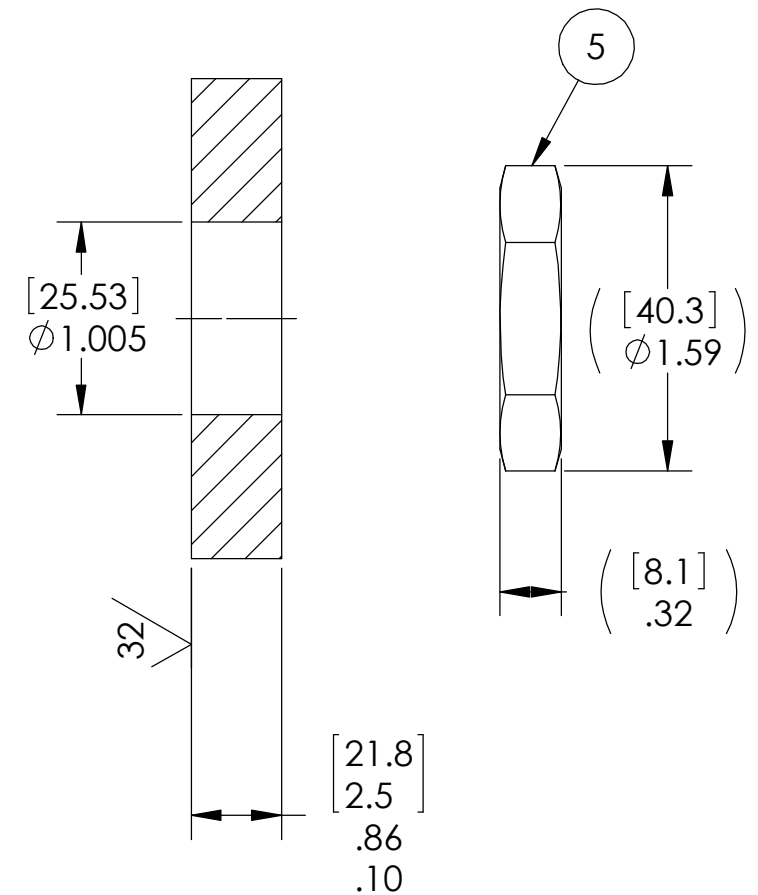


VS15L INSTALLATION PORT



NOTES:

1. HE LEAK TEST @1 ATM.  $1 \times 10^{-6}$  CC/SEC OR LESS. A GREEN PAINT DOT INDICATES THE PART HAS PASSED THE TEST.
2. HYPOT 630 VDC 500 MEGOHMS MINIMUM 0.01 SECOND MINIMUM CENTER CONDUCTOR TO SHIELD AND HOUSING WITH MATING CONNECTORS (SHIELD IS FLOATING).
3. CONTINUITY TEST 0.5 OHM MAXIMUM CENTER CONDUCTOR & SHIELD, END TO END, WITH MATING CONNECTORS.
4. ALCOHOL OR FOMBLIN YVAC 3 MAY BE USED TO LUBRICATE O-RINGS FOR VACUUM HELIUM LEAK TESTING.
5. ALL TESTS ARE PERFORMED AT ROOM TEMPERATURE.
6. ALL PARTS MUST PASS ALL TESTS.
7. COSMETIC SURFACE VOIDS NOT ON O-RING SEALING SURFACES ARE ACCEPTABLE BASED ON THE SEAL'S DIAMETER:  
 $\leq .5$  [12.7] SEAL DIAMETER:  $\phi .035$  [.89] MAX ALLOWED VOID SIZE  
 $> .5$  [12.7] SEAL DIAMETER:  $\phi .060$  [1.5] MAX ALLOWED VOID SIZE
8. DIMENSIONS ARE INCHES [millimeters].
9. REF-OPERATING TEMPERATURE  $-20^{\circ}\text{C}$  TO  $85^{\circ}\text{C}$ .
10. PAVE-SEAL CAN BE A BI-DIRECTIONAL HERMETIC SEAL FOR VACUUM AND MOST PRESSURES. FOR PRESSURES ABOVE 150 PSI (10 BAR), CHECK WITH SALES ENGINEERING.

5	1	0183	NUT VS15-SS
4	1	-215 VITON	O-RING -215 VITON 75
3	2	RCJ-034	JACK RCA PNL MT NICKEL PLATED BRASS YELLOW PBT INSULATOR
2	A/R	PAVE-Seal 150	EPOXY BLACK
1	1	0161	HOUSING VS15L-SS
ITEM	QTY	PART NUMBER	DESCRIPTION

**PAVE technology co.**

2751 Thunderhawk Court  
Dayton, OH 45414-3445  
U.S.A.  
tel (937) 890-1100  
fax (937) 8905165  
www.pavetechnologyco.com

DESCRIPTION  
VS15L-SS-150-1-RCA-RCA

PART NUMBER  
**5158**

MATERIAL NOTED

REVISION LEVEL -

PROJECTION

ALL DIMENSIONS AND TOLERANCES APPLY TO FINISHED PART IN INCHES.  
 ALLOWABLE TOLERANCES UNLESS SPECIFIED OTHERWISE: NONE  $\pm 0.5$   
 X.X DECIMAL  $\pm 0.1$  X.XX DECIMAL  $\pm 0.02$  X.XXX DECIMAL  $\pm 0.005$   
 ANGLES  $\pm 1$  DEGREE SURFACE FINISH 128 microinch RMS