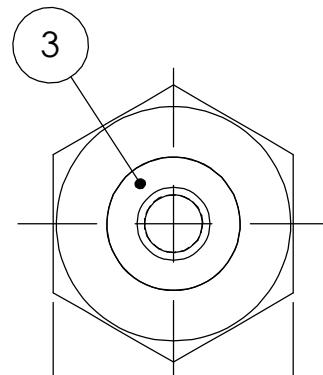


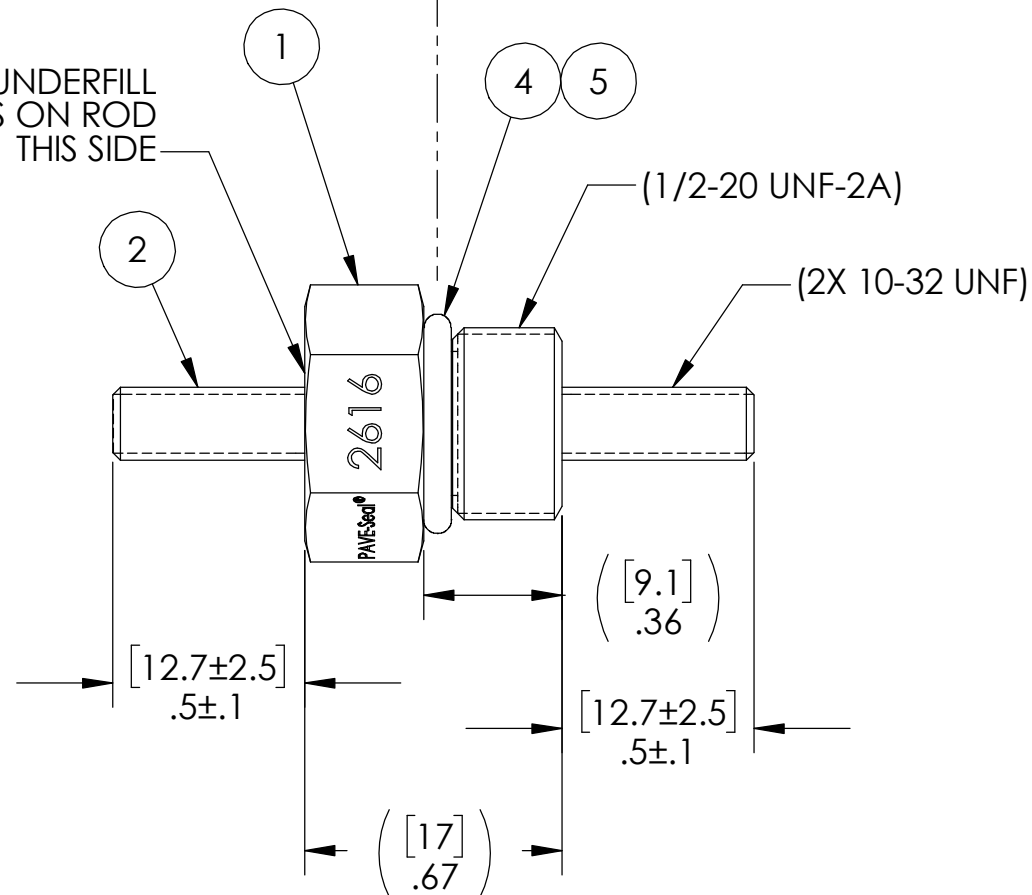
SCALE 1:1

.06 [1.5] MAXIMUM OVERFILL/UNDERFILL
NOT INCLUDING MENISCUS ON ROD
THIS SIDE

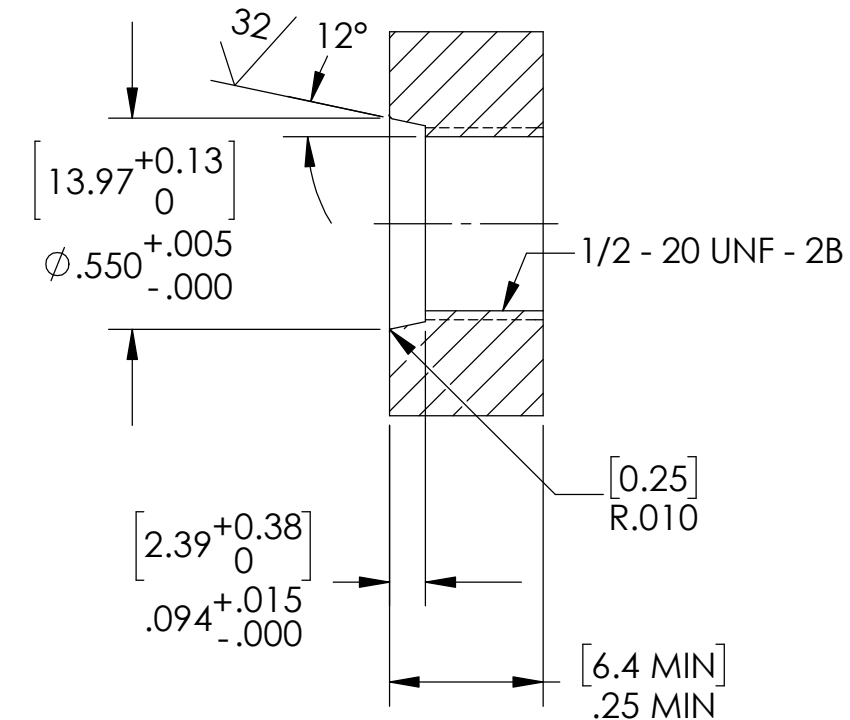


([15.88]
.625
HEX STOCK)

ATMOSPHERE VACUUM



SO8 INSTALLATION PORT



NOTES:

1. HE LEAK TEST @ 1 ATM. 1X10⁻⁷ CC/SEC OR LESS. A GREEN PAINT DOT INDICATES THE PART HAS PASSED THE TEST.
2. HYPOT 630 VDC 500 MEGOHMS MINIMUM 0.01 SECOND MINIMUM CENTER CONDUCTOR TO HOUSING.
3. ALL TESTS ARE PERFORMED AT ROOM TEMPERATURE.
4. ALL PARTS MUST PASS ALL TESTS.
5. DIMENSION IS OVER-ALL-LENGTH EXCLUDING OVERFILL ON PRESSURE SIDE OF HOUSING.
6. COSMETIC SURFACE VOIDS NOT ON O-RING SEALING SURFACES ARE ACCEPTABLE BASED ON THE SEAL'S DIAMETER:
 <= .5 [12.7] SEAL DIAMETER: Ø.035 [.89] MAX ALLOWED VOID SIZE
 > .5 [12.7] SEAL DIAMETER: Ø.060 [1.5] MAX ALLOWED VOID SIZE
7. REF-OPERATING TEMPERATURE 0 °C TO 80 °C.
8. DIMENSIONS ARE INCHES [millimeters].
9. PAVE-SEAL CAN BE A BI-DIRECTIONAL HERMETIC SEAL FOR VACUUM AND MOST PRESSURES. FOR PRESSURES ABOVE 150 PSI (10 BAR), CHECK WITH SALES ENGINEERING.

5	A/R	FOMBLIN YVAC 3	LUBRICANT O-RING FOMBLIN GREASE
4	1	-905 VITON	O-RING -905 VITON 75
3	A/R	PAVE-Seal 150	EPOXY BLACK
2	1	2616PG2C	ROD BRASS THREADED 10-32 1.67"L
1	1	5P50N-SS	HOUSING SO8-SS PARKER
ITEM	QTY	PART NUMBER	DESCRIPTION

		2751 Thunderhawk Court Dayton, OH 45414-3445 U.S.A. tel (937) 890-1100 fax (937) 8905165 www.pavetechnologyco.com	
DESCRIPTION SO8-SS-80-1-B10.32-5-5			
PART NUMBER 2616		MATERIAL NOTED	
REVISION LEVEL A		PROJECTION 	

ALL DIMENSIONS AND TOLERANCES APPLY TO FINISHED PART IN INCHES.
 ALLOWABLE TOLERANCES UNLESS SPECIFIED OTHERWISE: NONE ±0.5
 X.X DECIMAL ±0.1 X.XX DECIMAL ±0.02 X.XXX DECIMAL ±0.005
 ANGLES ±1 DEGREE SURFACE FINISH 128 microinch RMS