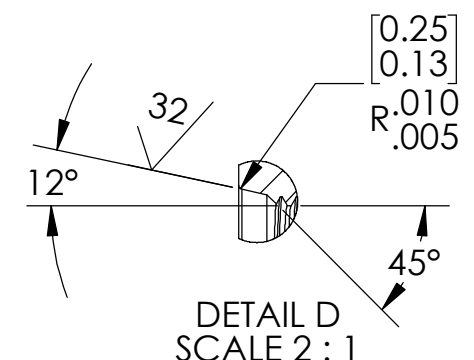
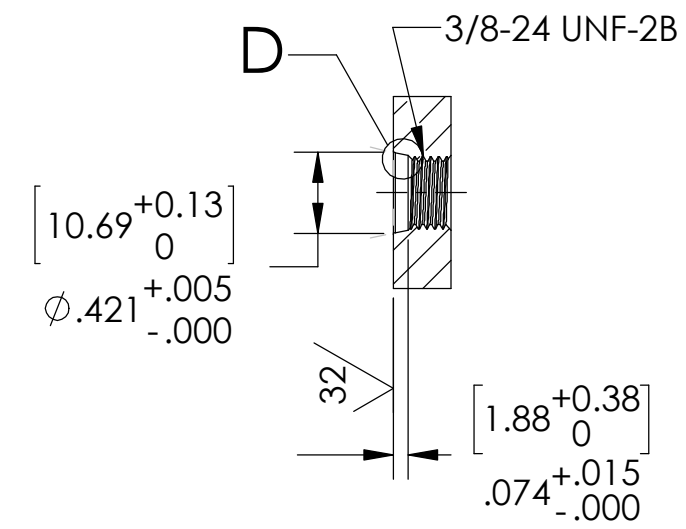


SO6 INSTALLATION PORT



NOTES:

1. LEAK TEST AS FOLLOWS, A GREEN PAINT DOT ON THE HEX SIDE INDICATES THE PART HAS PASSED THE SPECIFIED TEST:
5876 ONLY: 5000 PSI, NO N2 BUBBLES 30 SECONDS MINIMUM.
5876-1 ONLY: HE LEAK TEST @ 1 ATM. 1X10⁻⁶ CC/SEC OR LESS.
2. HYPOT 630 VDC 500 MEGOHMS MINIMUM 0.01 SECOND MINIMUM WIRE TO WIRE AND HOUSING.
3. ALL TESTS ARE PERFORMED AT ROOM TEMPERATURE.
4. ALL PARTS MUST PASS ALL TESTS.
5. WIRE POSITIONING IS APPROXIMATE & VARIABLE, WIRES ARE NOT REQUIRED TO BEND SHARPLY AT EPOXY SEAL SURFACE.
6. COSMETIC SURFACE VOIDS NOT ON O-RING SEALING SURFACES ARE ACCEPTABLE BASED ON THE SEAL'S DIAMETER:
<= .5 [12.7] SEAL DIAMETER: Ø.035 [.89] MAX ALLOWED VOID SIZE
> .5 [12.7] SEAL DIAMETER: Ø.060 [1.5] MAX ALLOWED VOID SIZE
7. REF-OPERATING TEMPERATURE RANGE -20°C TO 125°C.
8. DIMENSIONS ARE INCHES [millimeters].
9. PAVE-SEAL CAN BE A BI-DIRECTIONAL HERMETIC SEAL FOR VACUUM AND MOST PRESSURES. FOR PRESSURES ABOVE 150 PSI (10 BAR), CHECK WITH SALES ENGINEERING.

PAVE#	ITEM 8	ITEM 8 DESCRIPTION
5876	PARKER O-LUBE	LUBRICANT O-RING BARIUM-BASED
5876-1	FOMBLIN YVAC 3	LUBRICANT O-RING FOMBLIN GREASE

ITEM	QTY	PART NUMBER	DESCRIPTION
8	A/R	SEE TABLE	SEE TABLE
7	1	-903 VITON	O-RING -903 VITON 75
6	1	E24 YELLOW	WIRE 24E MIL-W-16878/4 7/#32
5	1	E24 ORANGE	WIRE 24E MIL-W-16878/4 7/#32
4	1	E24 GRAY	WIRE 24E MIL-W-16878/4 7/#32
3	1	E24 BLACK	WIRE 24E MIL-W-16878/4 7/#32
2	A/R	PAVE-Seal 150	EPOXY BLACK
1	1	5881	HOUSING SO6-SS

PAVE technology co.
 2751 Thunderhawk Court
 Dayton, OH 45414-3445
 U.S.A.
 tel (937) 890-1100
 fax (937) 8905165
 www.pavetechnologyco.com

DESCRIPTION SO6-SS-150-4-TE24-24-24	
PART NUMBER 5876	MATERIAL NOTED
REVISION LEVEL A	PROJECTION ☉ ◻

ALL DIMENSIONS AND TOLERANCES APPLY TO FINISHED PART IN INCHES.
 ALLOWABLE TOLERANCES UNLESS SPECIFIED OTHERWISE: NONE ±0.5
 X.X DECIMAL ±0.1 X.XX DECIMAL ±0.02 X.XXX DECIMAL ±0.005
 ANGLES ±1 DEGREE. SURFACE FINISH 128 microinch RMS