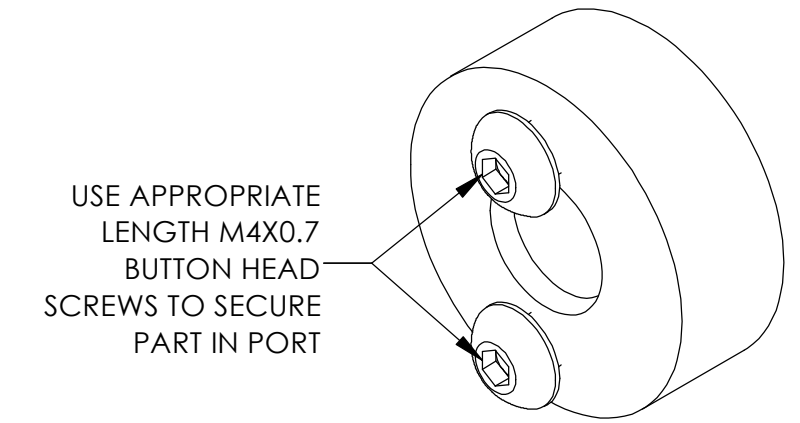
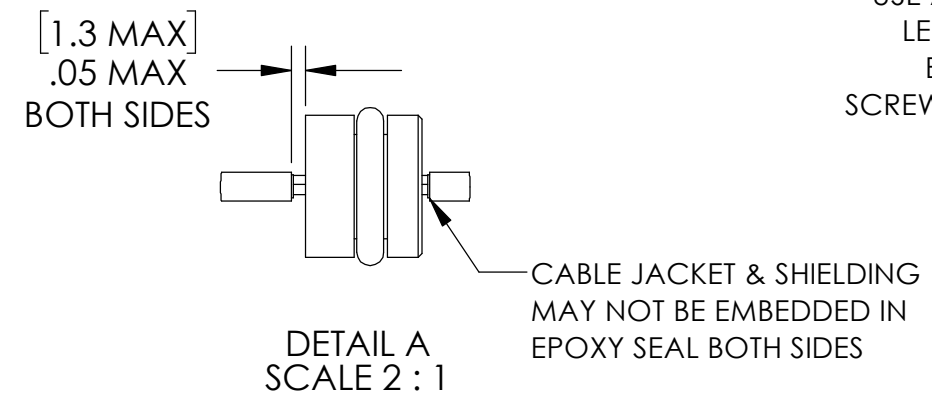


REF- SP6 PORT WITH SCREWS



USE APPROPRIATE LENGTH M4X0.7 BUTTON HEAD SCREWS TO SECURE PART IN PORT



NOTES:

1. HE LEAK TEST @ 1 ATM. 1×10^{-9} CC/SEC OR LESS. LUBRICATE O-RING WITH ALCOHOL TO INSTALL, A GREEN PAINT DOT ON THE ATMOSPHERE SIDE INDICATES THE PART HAS PASSED THE TEST.
2. HYPOT 630 VDC 500 MEGOHMS MINIMUM 0.01 SECOND MINIMUM WIRE TO WIRE.
3. ITEM 3 SHIELD IS NOT CONTINUOUS THROUGH EPOXY SEAL.
4. ALL TESTS ARE PERFORMED AT ROOM TEMPERATURE.
5. ALL PARTS MUST PASS ALL TESTS.
6. COSMETIC SURFACE VOIDS NOT ON O-RING SEALING SURFACES ARE ACCEPTABLE BASED ON THE SEAL'S DIAMETER:
 $\leq .5$ [12.7] SEAL DIAMETER: $\phi .035$ [.89] MAX ALLOWED VOID SIZE
 $> .5$ [12.7] SEAL DIAMETER: $\phi .060$ [1.5] MAX ALLOWED VOID SIZE
7. DIMENSION IS OVER-ALL-LENGTH EXCLUDING OVERFILL ON PRESSURE SIDE OF HOUSING.
8. REF-OPERATING TEMPERATURE RANGE -20°C TO 150°C .
9. REF-PARTS ARE DEFLASHED ON PARTING LINE $+0.005$ [0.13] MAXIMUM.
10. DIMENSIONS ARE INCHES [millimeters].
11. PAVE-SEAL CAN BE A BI-DIRECTIONAL HERMETIC SEAL FOR VACUUM AND MOST PRESSURES. FOR PRESSURES ABOVE 150 PSI (10 BAR), CHECK WITH SALES ENGINEERING.

ITEM	QTY	PART NUMBER	DESCRIPTION
4	1	-010 VITON	O-RING -010 VITON 75
3	1	TAU-2819.03	CABLE 3#28 TST SPC CONDUCTORS & BRAID PFA INSULATION & JACKET
2	A/R	PAVE-Seal 200	EPOXY BLACK
1	1	0168	HOUSING SP6-E

PAVE technology co.

2751 Thunderhawk Court
Dayton, OH 45414-3445
U.S.A.
tel (937) 890-1100
fax (937) 8905165
www.pavetechnologyco.com

DESCRIPTION
SP6-E-200-3-TE28-27-9.5

PART NUMBER
6021

MATERIAL NOTED

REVISION LEVEL -

PROJECTION

ALL DIMENSIONS AND TOLERANCES APPLY TO FINISHED PART IN INCHES.
 ALLOWABLE TOLERANCES UNLESS SPECIFIED OTHERWISE: NONE ± 0.5
 X.X DECIMAL ± 0.1 X.XX DECIMAL ± 0.02 X.XXX DECIMAL ± 0.005
 ANGLES ± 1 DEGREE. SURFACE FINISH 128 microinch RMS