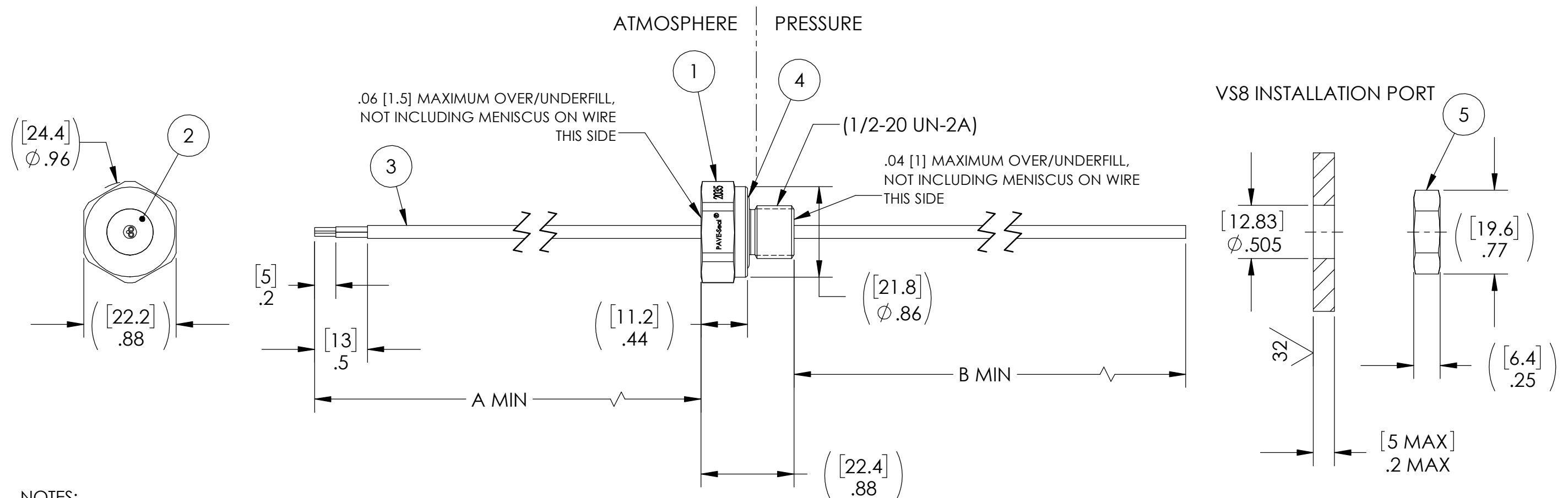


PAVE#	DESCRIPTION	A	B	TEST TIME	ITEM 3
2035	VS8-SS-150-1P-SX20-180-36	180 [4572]	36 [914]	9 MINUTES	SX20 CABLE
2035-1	VS8-SS-150-1P-SX20-12-100	12 [305]	100 [2540]	5 MINUTES	SX20 TWSH
2035-2	VS8-SS-150-1P-SX20-480-36	480 [12192]	36 [914]	22 MINUTES	SX20 TWSH

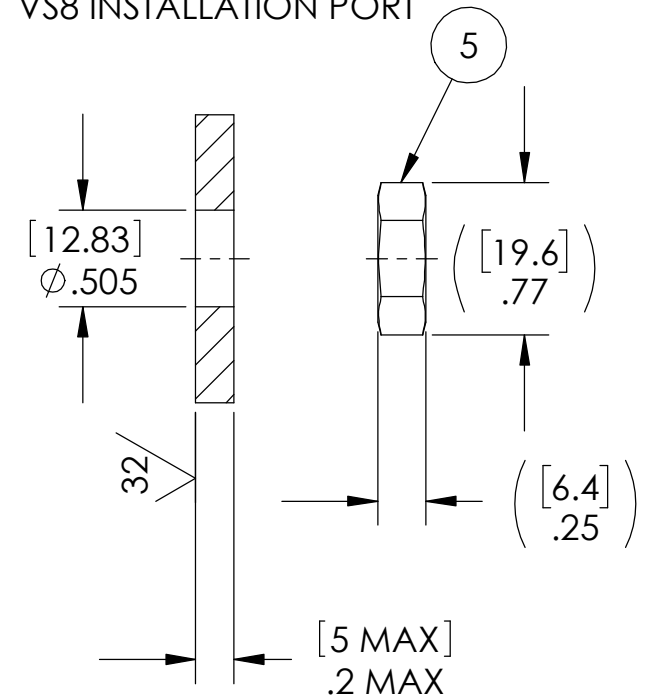


NOTES:

- LEAK TEST: 80 PSI, NO BUBBLES MINIMUM TEST TIME PER TABLE. A GREEN PAINT DOT ON THE ATMOSPHERE SIDE INDICATES THE PART HAS PASSED THE TEST.
- HYPOT 630 VDC 500 MEGOHMS MINIMUM 0.01 SECOND MINIMUM WIRE TO WIRE, DRAIN WIRE AND HOUSING.
- ALL TESTS ARE PERFORMED AT ROOM TEMPERATURE.
- ALL PARTS MUST PASS ALL TESTS.
- CABLE POSITIONING IS APPROXIMATE AND VARIABLE, CABLE IS NOT REQUIRED TO BEND SHARPLY AT EPOXY SEAL SURFACE.
- COSMETIC SURFACE VOIDS NOT ON O-RING SEALING SURFACES ARE ACCEPTABLE BASED ON THE SEAL'S DIAMETER:
 <= .5 [12.7] SEAL DIAMETER: ϕ .035 [.89] MAX ALLOWED VOID SIZE
 > .5 [12.7] SEAL DIAMETER: ϕ .060 [1.5] MAX ALLOWED VOID SIZE
- DIMENSIONS ARE INCHES [millimeters].
- PAVE-SEAL CAN BE A BI-DIRECTIONAL HERMETIC SEAL FOR VACUUM AND MOST PRESSURES. FOR PRESSURES ABOVE 150 PSI (10 BAR), CHECK WITH SALES ENGINEERING.
- REF-OPERATING TEMPERATURE RANGE -20 °C TO 125 °C.

5	1	0894	NUT VS8-SS
4	1	-112 VITON	O-RING -112 VITON 75
3	1	SEE TABLE	CABLE T/C 20 ANSI SX TWSH
2	A/R	PAVE-Seal 150	EPOXY BLACK
1	1	0892	HOUSING VS8-SS 316SS
ITEM	QTY	PART NUMBER	DESCRIPTION

VS8 INSTALLATION PORT



ALL DIMENSIONS AND TOLERANCES APPLY TO FINISHED PART IN INCHES.
 ALLOWABLE TOLERANCES UNLESS SPECIFIED OTHERWISE: NONE ±0.5
 X.X DECIMAL ±0.1 X.XX DECIMAL ±0.02 X.XXX DECIMAL ±0.005
 ANGLES ±1 DEGREE SURFACE FINISH 128 microinch RMS

PAVE technology co.
 2751 Thunderhawk Court
 Dayton, OH 45414-3445
 U.S.A.
 tel (937) 890-1100
 fax (937) 8905165
 www.pavetechnologyco.com

DESCRIPTION	SEE TABLE		
PART NUMBER *SEE TABLE	MATERIAL	NOTED	
2035*	REVISION LEVEL	E	PROJECTION