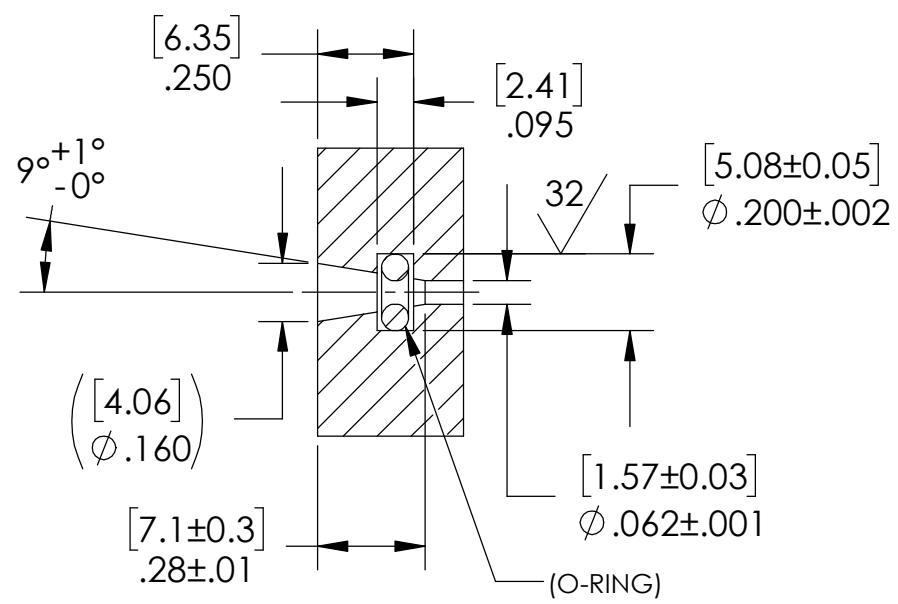


REF-PAVE TP1 LEAK TEST PORT  
SEE NOTE 6  
SCALE: 2:1



NOTES:

1. LEAK TEST: 5000 PSI, NO N2 BUBBLES 2 MINUTES MINIMUM. TEST IS PERFORMED IN THE PAVE TP1 LEAK TEST PORT SHOWN USING A SIZE -004 O-RING.
2. HYPOT 300 VDC 250 MEGOHMS MINIMUM 0.01 SECOND MINIMUM WIRE TO PAVE LEAK TEST PORT.
3. ALL TESTS ARE PERFORMED AT ROOM TEMPERATURE.
4. ALL PARTS MUST PASS ALL TESTS.
5. REF-TAPERED BORE MAY BE MADE USING AN 8.5° PER SIDE TAPERED END MILL, 1/8" TIP, MODIFIED TO  $\phi .060 \pm .001$ .
6. PAVE WILL GRITBLAST & CLEAN EPOXY BODY OF PART AFTER LEAK TESTING FOR CUSTOMER DETERMINED ADHESIVE BONDING.
7. REF-CUSTOMER TO ROUGH UP TAPERED BORE FOR ADHESIVE BOND.
8. X° TOLERANCE BASED ON CUSTOMER'S NEED TO SEAL PART IN PORT WITH AN ADHESIVE BOND.
9. DIMENSIONS ARE INCHES [millimeters].

**PAVE technology co.**  
2751 Thunderhawk Court  
Dayton, OH 45414-3445  
U.S.A.  
tel (937) 890-1100  
fax (937) 8905165  
www.pavetechnologyco.com

2	1	PC30 BLACK	WIRE 30 PVC MIL-W-16878/1 TYPE B 7/#38
1	A/R	PAVE-Seal 150	EPOXY BLACK
ITEM	QTY	PART NUMBER	DESCRIPTION

DESCRIPTION		TP1-E-150-1-PC30-4-4	
PART NUMBER	MATERIAL	NOTED	
<b>2073</b>	REVISION LEVEL	B	
PROJECTION			

ALL DIMENSIONS AND TOLERANCES APPLY TO FINISHED PART IN INCHES.  
ALLOWABLE TOLERANCES UNLESS SPECIFIED OTHERWISE: NONE ±0.5  
X.X DECIMAL ±0.1 X.XX DECIMAL ±0.02 X.XXX DECIMAL ±0.005  
ANGLES ±1 DEGREE SURFACE FINISH 128 microinch RMS