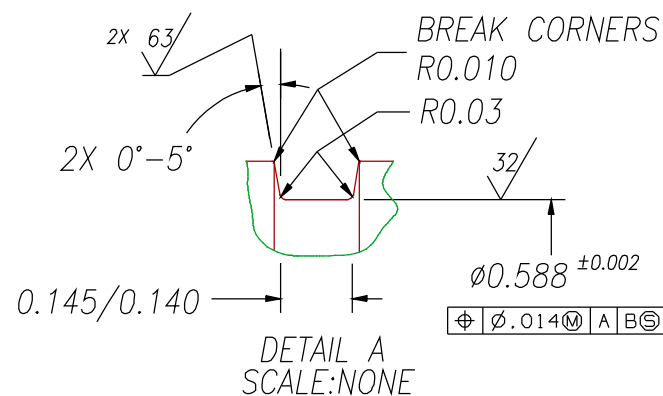
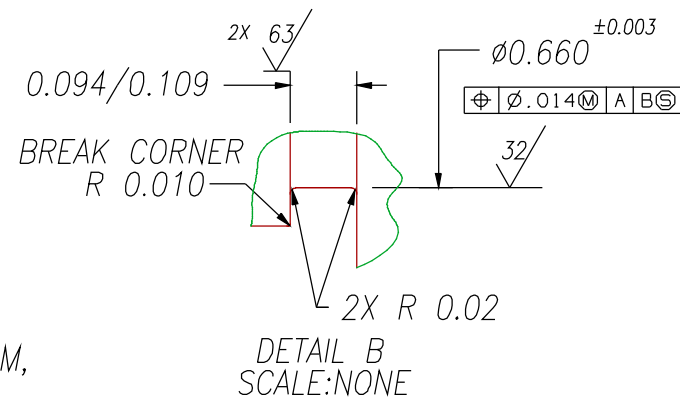
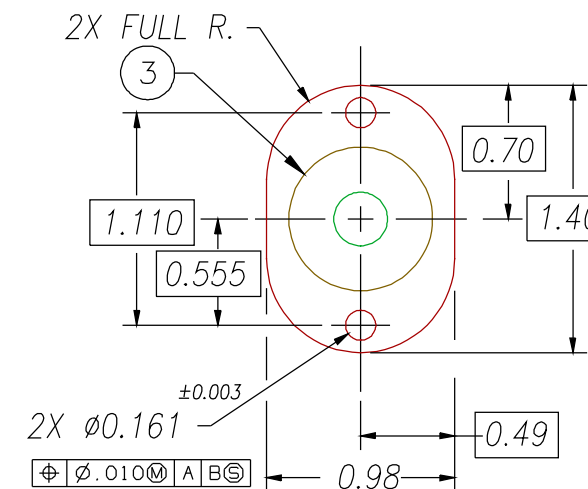
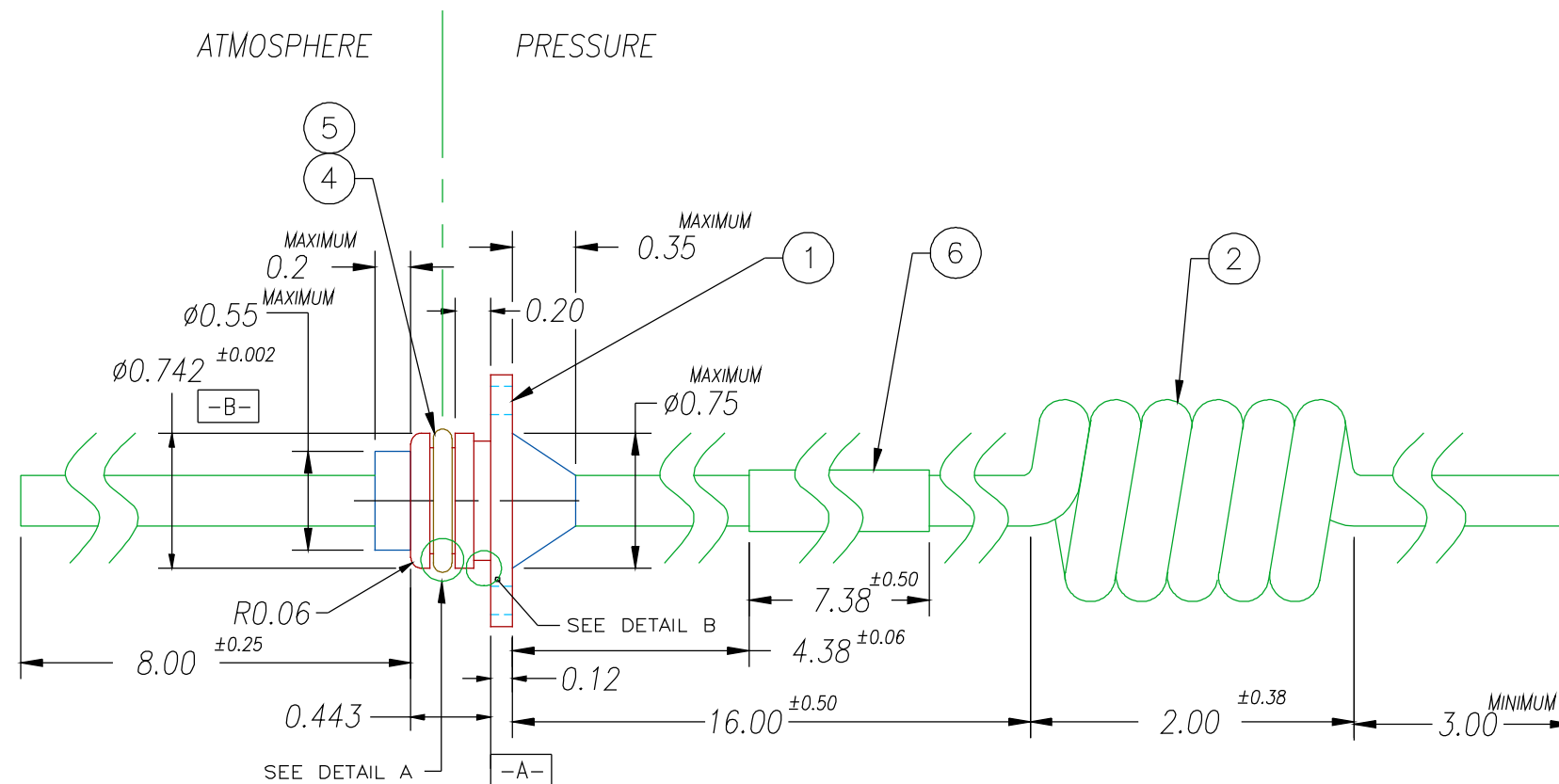
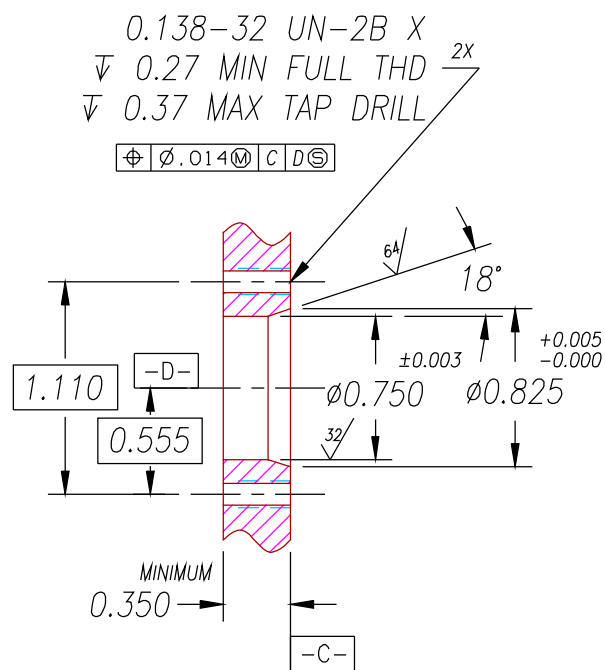


INSTALLATION PORT

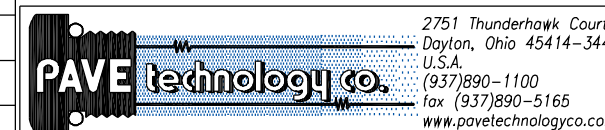


NOTES:

1. HE LEAK TEST @ 1000 PSI 30 SECONDS MINIMUM, SNIFFER TEST 10^{-4} CC/S.
2. HYPOT 630 VDC 500 MΩ 0.01 SEC MINIMUM, WIRE TO WIRE & HOUSING.
3. CONTINUITY TEST: 0.5Ω SHIELD TO HOUSING & SHIELD END TO END.
4. ALL TESTS ARE PERFORMED AT ROOM TEMPERATURE.
5. ALL PARTS MUST PASS ALL TESTS.
6. CHECK INSTALLATION WITH ITEM 4, -908 BUNA 70 O-RING IN "DETAIL B" GROOVE & (2) 0.138-32 X 0.25 SCREWS.

6	7.38"	FIT-300-3/8	TUBING SHRINK POLYOLEFIN 3/8" 3:1
5	A/R	PARKER O-LUBE	LUBRICANT O-RING BARIUM-BASED
4	1	-113 BUNA	O-RING -113 BUNA 70
3	A/R	PAVE-Seal 150	EPOXY BLACK
2	1	MEYER CABLE	#FC-LJH2-DAAETA (PRE-CUT & COILED)
1	1	2164	HOUSING FL12-AL (ANODIZED 6061-T651)
ITEM	QTY	PART#	DESCRIPTION

ALL DIMENSIONS AND TOLERANCES APPLY TO FINISHED PART IN MM
 ALLOWABLE TOLERANCES UNLESS SPECIFIED OTHERWISE: NONE +/-13
 X.X DECIMAL +/-2.5 X.XX DECIMAL +/-0.50 X.XXX DECIMAL +/-0.100
 ANGLES +/- 1 DEG SURFACE FINISH 3.2 micrometers RMS



DESCRIPTION PAVE-Seal® Cable Harnesses
 FL12-AL-150-9C/PP23-12-33

PART NUMBER
 2281

REVISION LEVEL H
 PROJECTION