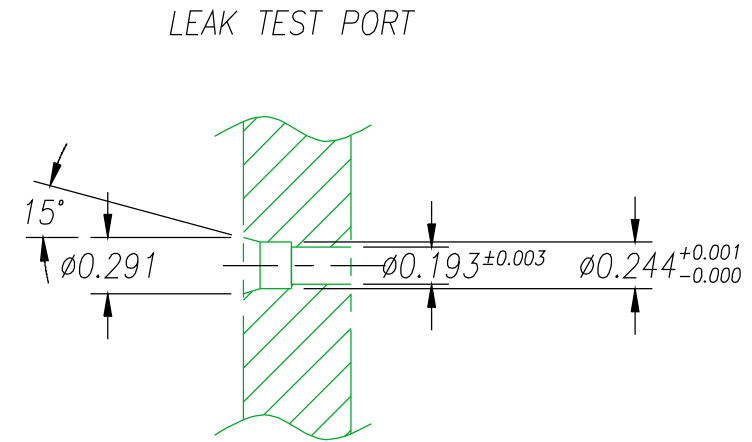
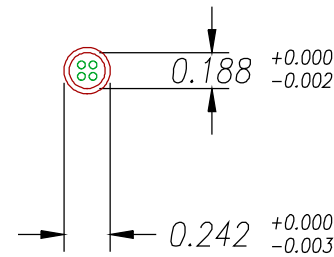
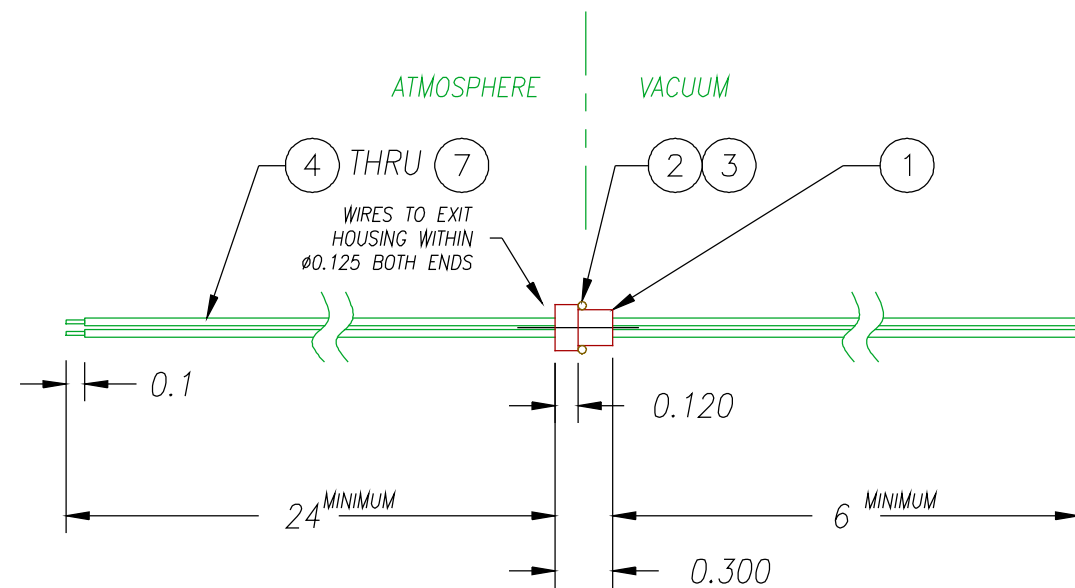


ISSUE LET.	ALTERATIONS	CHANGED BY	DATE



NOTES:

- HE LEAK TEST @1 ATM. 10^{-8} CC/S.
- HYPOT 630 VDC 500 MΩ 0.01 SEC MINIMUM, WIRE TO WIRE.
- ALL TESTS ARE PERFORMED AT ROOM TEMPERATURE.
- PERCENTAGE OF PARTS TESTED WILL BE 100% (MAY BE A LESSER PERCENTAGE FOR LARGE PRODUCTION QUANTITIES, UNLESS OTHERWISE NOTED OR REQUIRED).

7	31"	E26 BE 22759/11	WIRE 26E MIL-W-22759/11 .010 19/#38
6	31"	E26 GN 22759/11	WIRE 26E MIL-W-22759/11 .010 19/#38
5	31"	E26 BK 22759/11	WIRE 26E MIL-W-22759/11 .010 19/#38
4	31"	E26 RD 22759/11	WIRE 26E MIL-W-22759/11 .010 19/#38
3	A/R	SUPER O-LUBE	LUBRICANT O-RING SILICONE-BASED
2	1	.166X.042-60 EP	O-RING 0.166ID X 0.042CS EP 60
1	1	PAVE-Seal 150	EPOXY BLACK
ITEM	QTY	PART#	DESCRIPTION

PAVE will meet the assembly and test specifications of MPC DWG 3999573017 as documented on this assembly drawing. Any changes must be approved by PAVE.

PAVE technology co.
 2751 Thunderhawk Court
 Dayton, OH 45414-3445
 U.S.A.
 tel (937) 890-1100
 fax (937) 890-5165
 www.pavetechnologyco.com

DESCRIPTION PAVE-Seal® Cable Harnesses
 SP3.9-E-150-4-TE26-24-6

MATERIAL

NOTED

DR. BY AJH	APPROVED BY	DRAWN FROM MPCIL
CH'D BY	DATE 25 JUN 02	SCALE 1 = 1
PART NUMBER 2465	1 2	REVISION LEVEL -
		PROJECTION ⊙ ◁

FINISH

ALL DIMENSIONS AND TOLERANCES APPLY TO FINISHED PART IN INCHES.
 ALLOWABLE TOLERANCES UNLESS SPECIFIED OTHERWISE: NONE ±0.5
 X.X DECIMAL ±0.1 X.XX DECIMAL ±0.02 X.XXX DECIMAL ±0.005
 ANGLES ±1 DEGREE SURFACE FINISH 128 microinch RMS