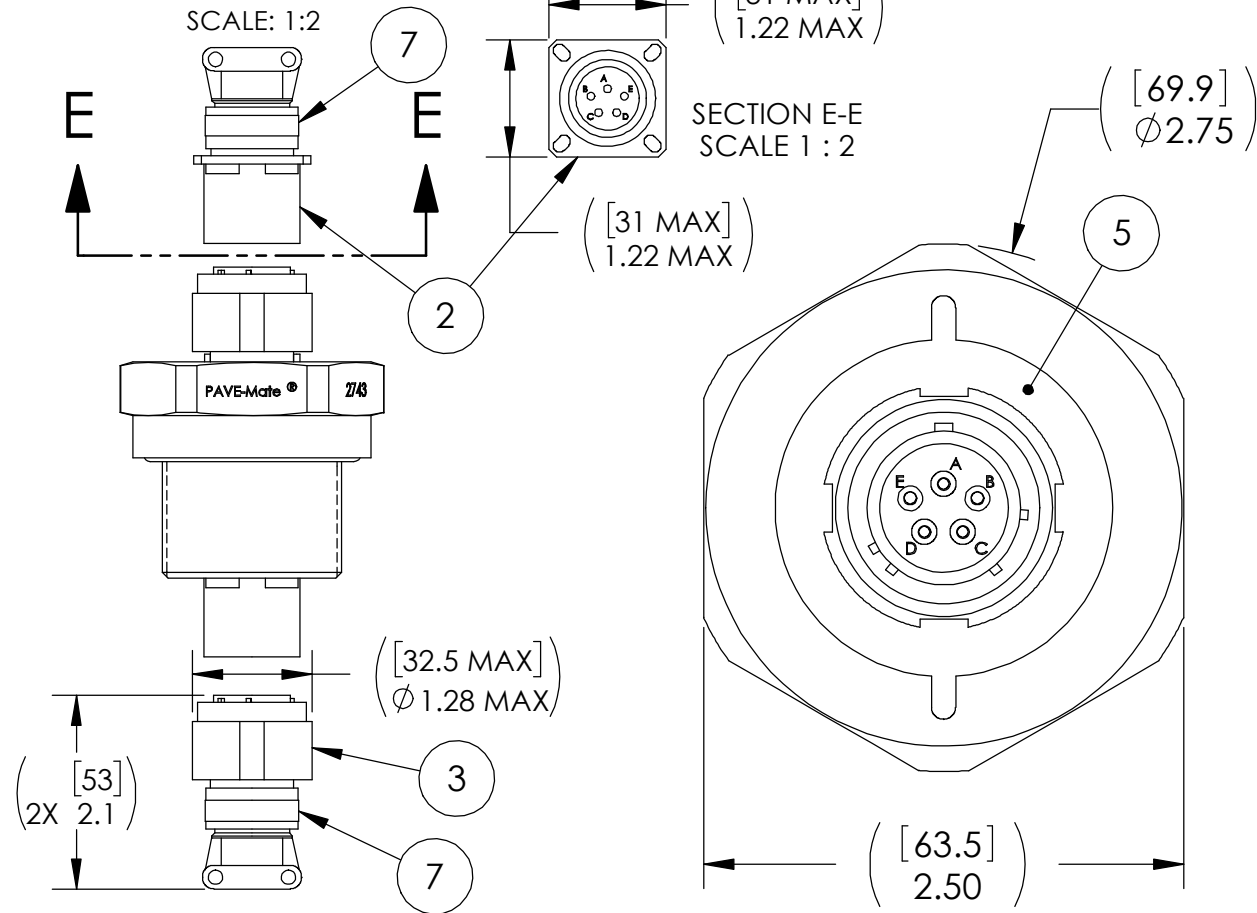
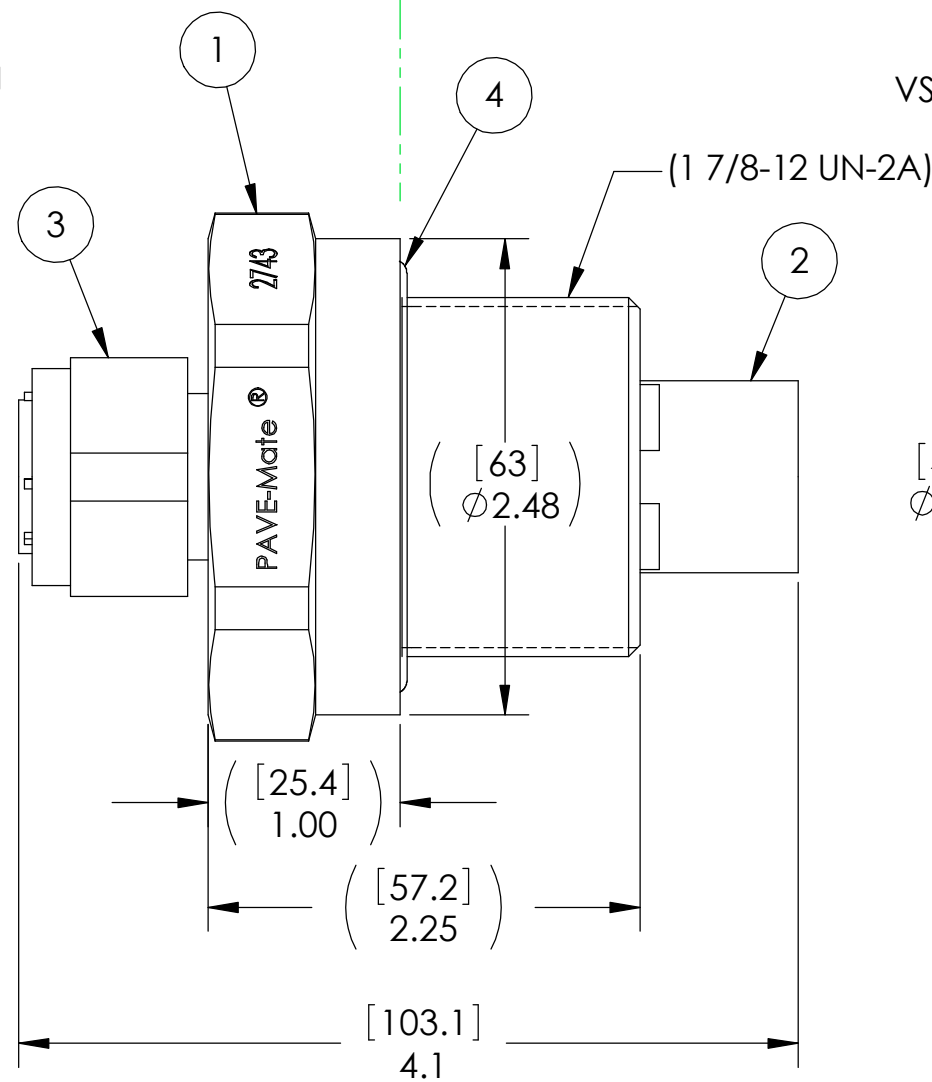


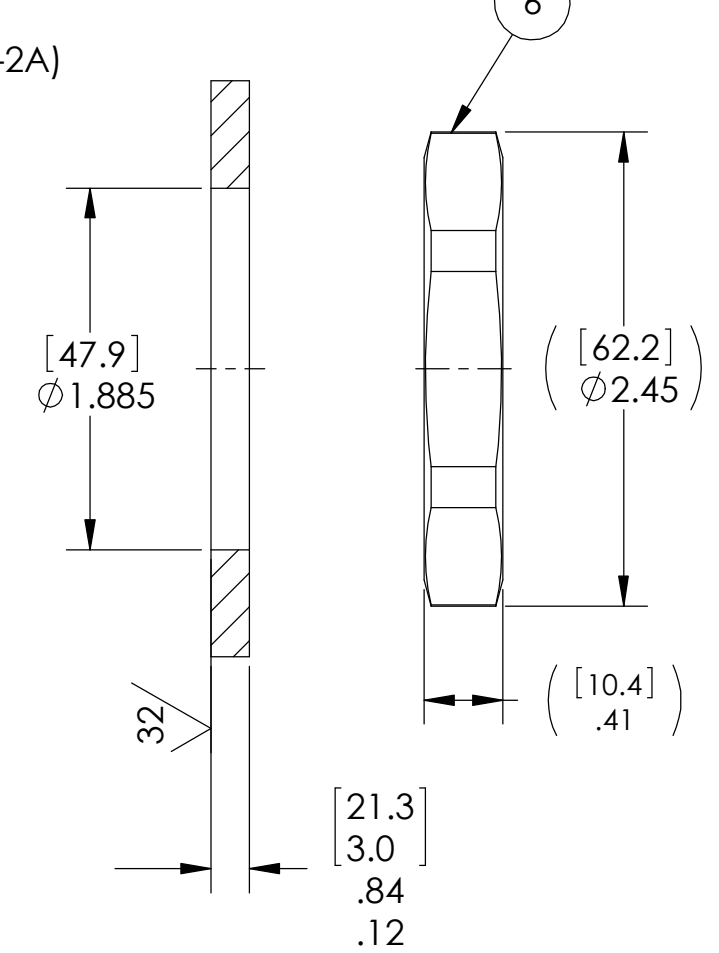
REF-MATING CONNECTORS



ATMOSPHERE | VACUUM



VS26 INSTALLATION PORT



NOTES:

1. HE LEAK TEST @ 1 ATM. 5X10⁻⁸ CC/SEC OR LESS. A GREEN PAINT DOT ON THE ATMOSPHERE SIDE INDICATES THE PART HAS PASSED THE TEST.
2. HYPOT 1000 VDC 500 MEGOHMS MINIMUM 0.01 SECOND MINIMUM PIN TO PIN AND HOUSING WITH MATING CONNECTORS.
3. CONTINUITY TEST PIN TO SOCKET < 0.5 OHM WITH MATING CONNECTORS.
4. ALL TESTS ARE PERFORMED AT ROOM TEMPERATURE.
5. ALL PARTS MUST PASS ALL TESTS.
6. REF-OPERATING TEMPERATURE RANGE -20°C TO 125°C.
7. SHELLS FOR ITEMS 2 & 3, AND HOUSING (ITEM 1) ARE TO HAVE ELECTRICCAL CONTINUITY.
8. DIMENSIONS ARE INCHES [millimeters].
9. PAVE-SEAL CAN BE A BI-DIRECTIONAL HERMETIC SEAL FOR VACUUM AND MOST PRESSURES. FOR PRESSURES ABOVE 150 PSI (10 BAR), CHECK WITH SALES ENGINEERING.
10. COSMETIC SURFACE VOIDS NOT ON O-RING SEALING SURFACES ARE ACCEPTABLE BASED ON THE SEAL'S DIAMETER:
 <= .5 [12.7] SEAL DIAMETER: Ø.035 [.89] MAX ALLOWED VOID SIZE
 > .5 [12.7] SEAL DIAMETER: Ø.060 [1.5] MAX ALLOWED VOID SIZE
11. ALCOHOL OR FOMBLIN YVAC 3 MAY BE USED TO LUBRICATE O-RINGS FOR VACUUM HELIUM LEAK TESTING.

7	2	M85049-38-15N	STRAIN RELIEF 38999 SHELL 15 NICKEL PLATED ALUMINUM
6	1	0185	NUT VS26-SS
5	A/R	PAVE-Seal 150	EPOXY BLACK
4	1	-226 VITON	O-RING -226 VITON 75
3	2	26FD05PN	PLUG 5#16 PIN NICKEL PLATED ALUMINUM SHELL GOLD PLATED COPPER ALLOY CRIMP CONTACTS
2	2	20FD05SN	RCPT 5#16 SOCKET NICKEL PLATED ALUMINUM SHELL GOLD PLATED COPPER ALLOY CRIMP CONTACTS
1	1	3664	HOUSING VS26-SS
ITEM	QTY	PART NUMBER	DESCRIPTION

PAVE technology co.
 2751 Thunderhawk Court
 Dayton, OH 45414-3445
 U.S.A.
 tel (937) 890-1100
 fax (937) 8905165
 www.pavetechnologyco.com

DESCRIPTION
 VS26-SS-150-5-16-99926/20PS

PART NUMBER
2743

MATERIAL NOTED

REVISION LEVEL
 D

PROJECTION

ALL DIMENSIONS AND TOLERANCES APPLY TO FINISHED PART IN INCHES.
 ALLOWABLE TOLERANCES UNLESS SPECIFIED OTHERWISE: NONE ±0.5
 X.X DECIMAL ±0.1 X.XX DECIMAL ±0.02 X.XXX DECIMAL ±0.005
 ANGLES ±1 DEGREE SURFACE FINISH 128 microinch RMS