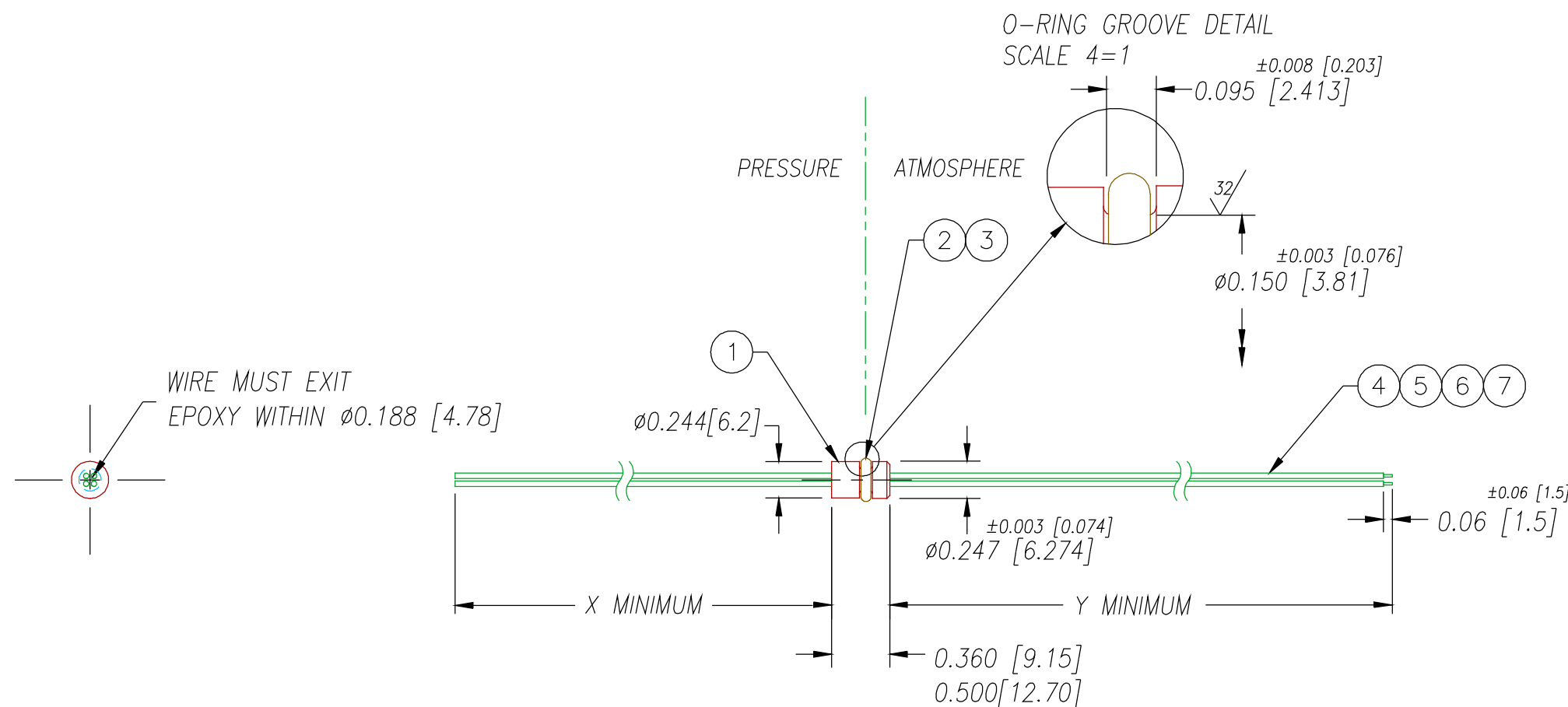
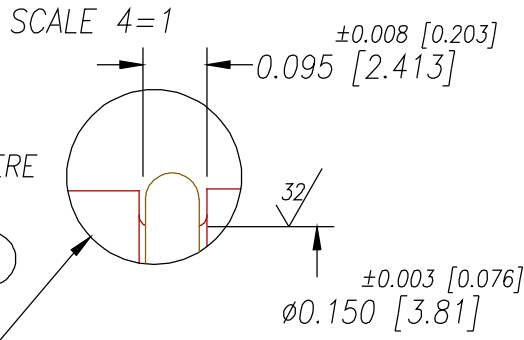


PART#	X	Y	PRESSURE	PAVE DESCRIPTION
2846	1.97 [50]	19.69 [500]	3625 PSI (250 BAR)	SP4S-E-150-4-TE28-50-500mm
2846-1	7.88 [200]	7.88 [200]	5000 PSI (345 BAR)	SP4S-E-150-4-TE28-200-200mm

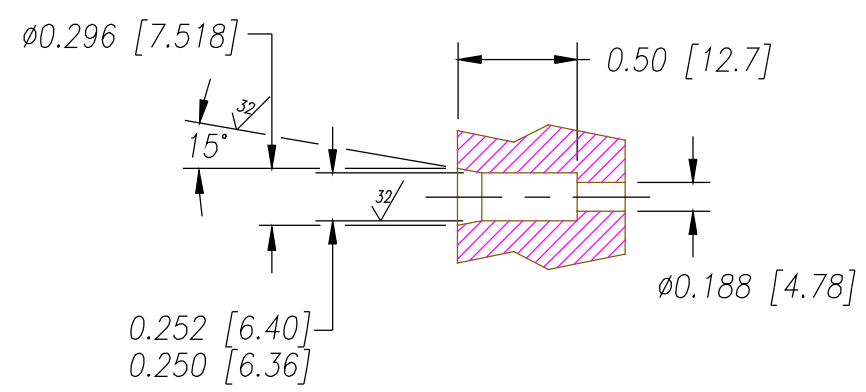


WIRE MUST EXIT
EPOXY WITHIN $\phi 0.188$ [4.78]

O-RING GROOVE DETAIL



SP4S RECOMMENDED INSTALLATION & LEAK TEST PORT DIMS



NOTES:

- LEAK TEST: PRESSURE PER TABLE, NO BUBBLES 30 SECONDS MINIMUM. A GREEN PAINT DOT INDICATES THE PART HAS PASSED THE TEST.
- HIPOT 630 VDC 500 MΩ .01 SEC MINIMUM, WIRE TO WIRE.
- ALL TESTS ARE PERFORMED AT ROOM TEMPERATURE.
- ALL PARTS MUST PASS ALL TESTS.
- WIRE POSITIONING IS APPROXIMATE & VARIABLE.
- COSMETIC SURFACE VOIDS NOT ON O-RING SEALING SURFACES ARE ACCEPTABLE BASED ON THE SEAL'S DIAMETER:
 $\leq .5$ [12.7] SEAL DIAMETER: $\phi 0.035$ [.89] MAX ALLOWED VOID SIZE
 $> .5$ [12.7] SEAL DIAMETER: $\phi 0.060$ [1.5] MAX ALLOWED VOID SIZE
- REF-OPERATING TEMPERATURE RANGE -20°C TO 125°C .
- DIMENSIONS ARE INCHES [millimeters].

7	1	E28 ORANGE	WIRE 28E MIL-W-16878/4 .010 7/#36
6	1	E28 GREEN	WIRE 28E MIL-W-16878/4 .010 7/#36
5	1	E28 GRAY	WIRE 28E MIL-W-16878/4 .010 7/#36
4	1	E28 BLUE	WIRE 28E MIL-W-16878/4 .010 7/#36
3	A/R	SUPER O-LUBE	LUBRICANT O-RING SILICONE BASED
2	1	-006 VITON	O-RING -006 VITON 75
1	A/R	PAVE-Seal 150	EPOXY BLACK
ITEM	QTY	PART#	DESCRIPTION

2751 Thunderhawk Court
Dayton, Ohio 45414-3445
U.S.A.
(937)890-1100
fax (937)890-5165
www.pavetechnologyco.com

PAVE technology co.

DESCRIPTION PAVE-Seal® Cable Harnesses
SEE TABLE

PART NUMBER *SEE TABLE
2846*

REVISION LEVEL C

PROJECTION

ALL DIMENSIONS AND TOLERANCES APPLY TO FINISHED PART IN INCHES
ALLOWABLE TOLERANCES UNLESS SPECIFIED OTHERWISE: NONE +/-0.5
.X DECIMAL +/- 0.1 .XX DECIMAL +/- 0.02 .XXX DECIMAL +/-0.005
ANGLES +/- 1 DEG SURFACE FINISH 128 microinch RMS