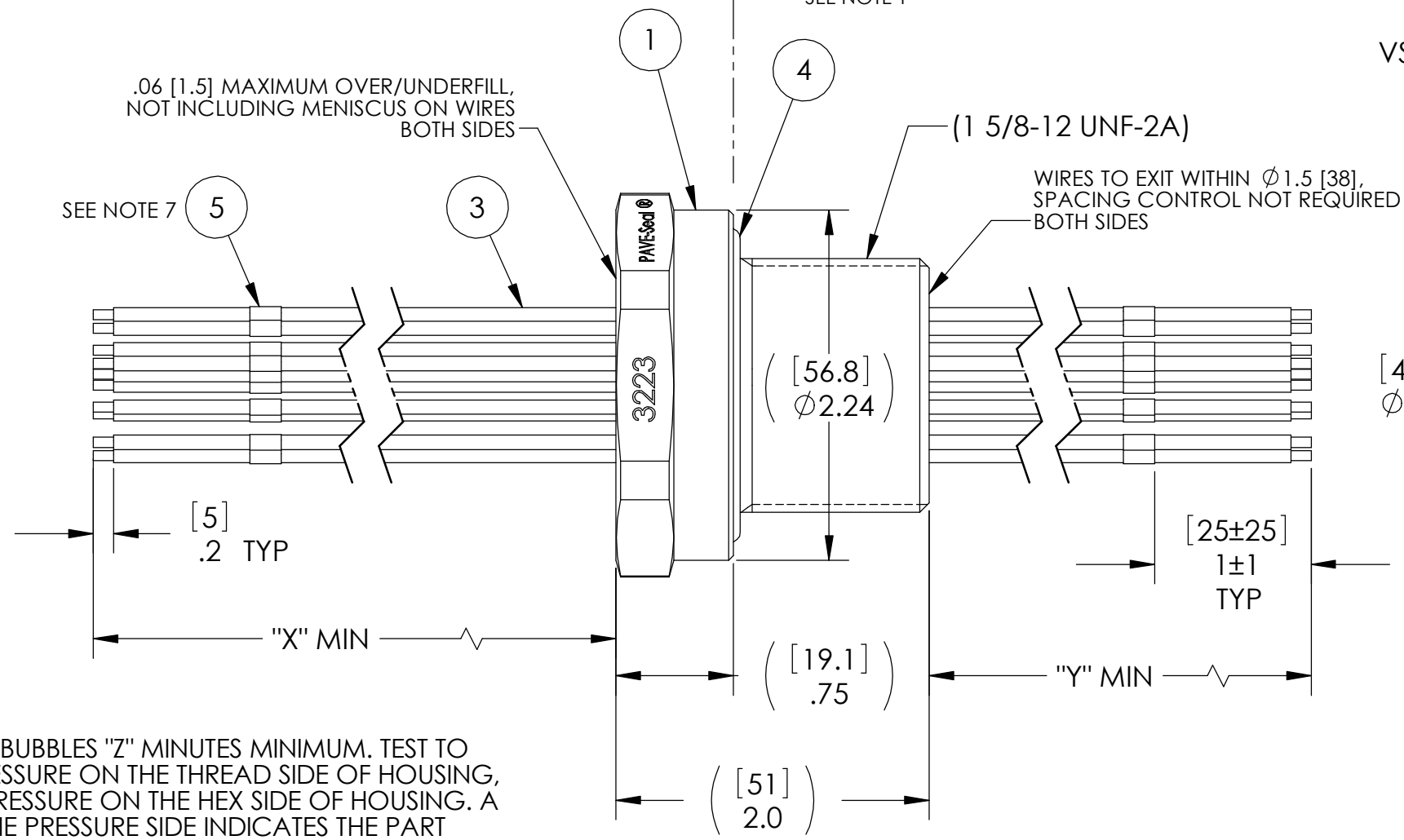
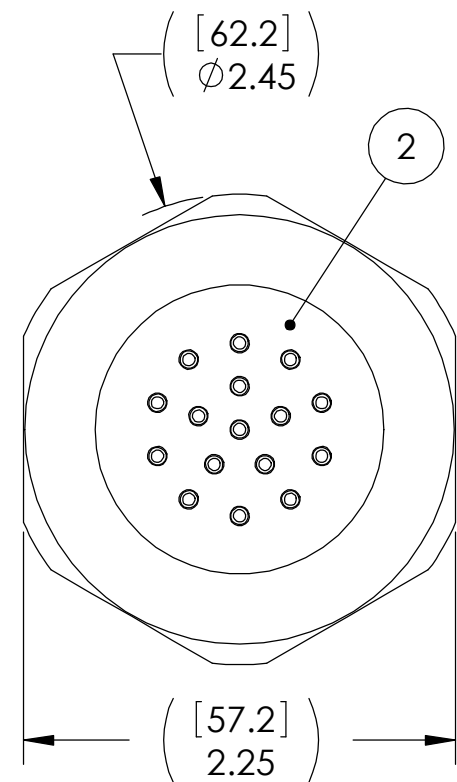
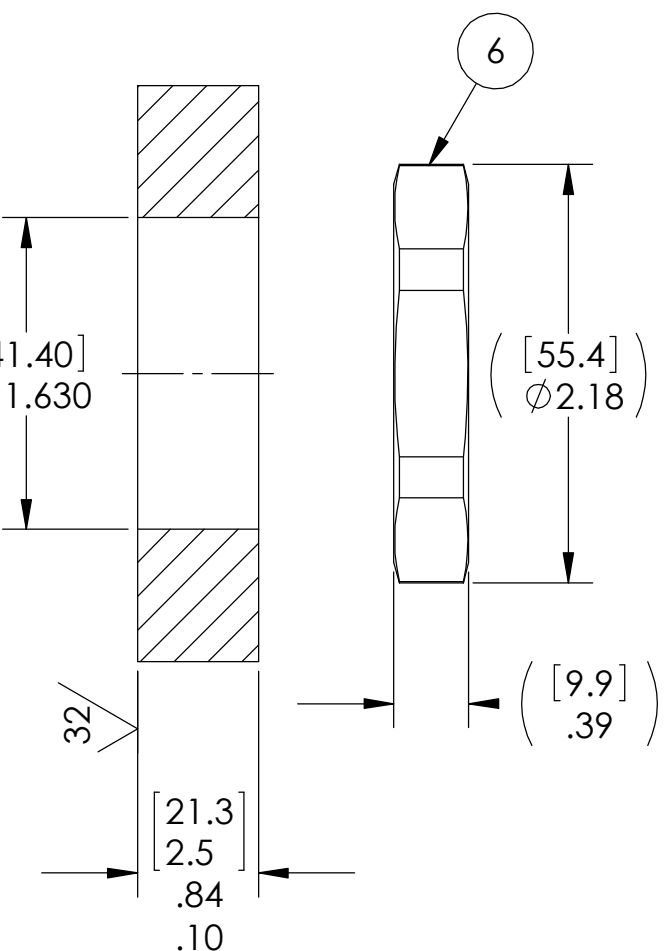


PART #	"X"	"Y"	"Z"	DESCRIPTION
3223	96 [2438]	24 [610]	5	VS22-304SS-150-16-TZ14-96-24
3223-1	192 [4877]	48 [1219]	10	VS22-304SS-150-16-TZ14-192-48



VS22 INSTALLATION PORT



NOTES:

- LEAK TEST: 80 PSI, NO N2 BUBBLES "Z" MINUTES MINIMUM. TEST TO BE PERFORMED WITH PRESSURE ON THE THREAD SIDE OF HOUSING, PART TO BE USED WITH PRESSURE ON THE HEX SIDE OF HOUSING. A GREEN PAINT DOT ON THE PRESSURE SIDE INDICATES THE PART PASSED THE TEST.
- HYPOT 630 VDC 500 MEGOHMS MINIMUM 0.01 SECOND MINIMUM WIRE TO WIRE AND HOUSING.
- ALL TESTS ARE PERFORMED AT ROOM TEMPERATURE.
- ALL PARTS MUST PASS ALL TESTS.
- WIRES ARE NOT REQUIRED TO BEND SHARPLY AT EPOXY SEAL SURFACE.
- DIMENSIONS ARE INCHES [millimeters].
- MARK EACH WIRE WITH A UNIQUE NUMBER, 1 THROUGH 16, USING THE SAME NUMBER ON BOTH ENDS OF THE SAME WIRE.
- COSMETIC SURFACE VOIDS NOT ON O-RING SEALING SURFACES ARE ACCEPTABLE BASED ON THE SEAL'S DIAMETER:
 <= .5 [12.7] SEAL DIAMETER: Ø.035 [.89] MAX ALLOWED VOID SIZE
 > .5 [12.7] SEAL DIAMETER: Ø.060 [1.5] MAX ALLOWED VOID SIZE
- REF-OPERATING TEMPERATURE RANGE -35 °C TO 125 °C.
- PAVE-SEAL CAN BE A BI-DIRECTIONAL HERMETIC SEAL FOR VACUUM AND MOST PRESSURES. FOR PRESSURES ABOVE 150 PSI (10 BAR), CHECK WITH SALES ENGINEERING.
- TZ14 WIRE COLOR IS VARIABLE.

ITEM	QTY	PART NUMBER	DESCRIPTION
6	1	0199	NUT VS22-SS
5	32	BRADY WIRE MARKERS	WIRE MARKER BRADY (NUMBERED 1-16)
4	1	2-224 V1226-75	O-RING -224 VITON -35C V1226-75
3	16	TZ14 ANY COLOR	WIRE 14TZ (ANY COLOR)
2	A/R	PAVE-Seal 150	EPOXY BLACK
1	1	0189/304SS	HOUSING VS22-304SS

PAVE technology co.

2751 Thunderhawk Court
Dayton, OH 45414-3445
U.S.A.
tel (937) 890-1100
fax (937) 8905165
www.pavetechnologyco.com

DESCRIPTION: SEE TABLE

PART NUMBER: **3223**

MATERIAL: NOTED

REVISION LEVEL: H

PROJECTION:

ALL DIMENSIONS AND TOLERANCES APPLY TO FINISHED PART IN INCHES.
 ALLOWABLE TOLERANCES UNLESS SPECIFIED OTHERWISE: NONE ±0.5
 X.X DECIMAL ±0.1 X.XX DECIMAL ±0.02 X.XXX DECIMAL ±0.005
 ANGLES ±1 DEGREE SURFACE FINISH 128 microinch RMS