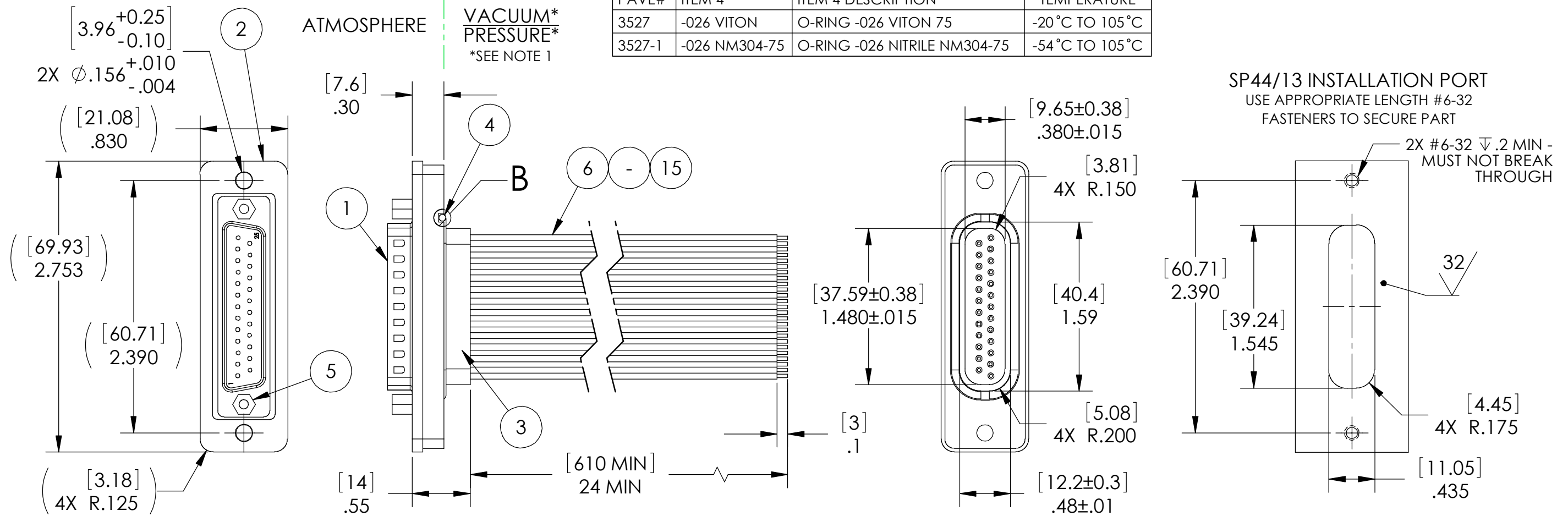
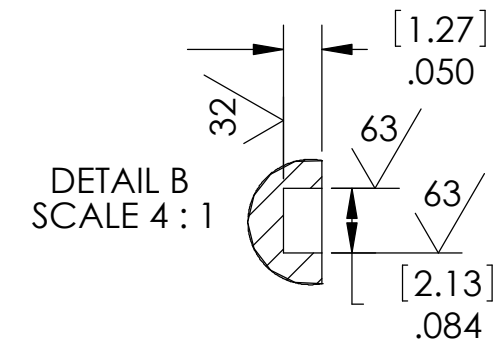


PAVE#	ITEM 4	ITEM 4 DESCRIPTION	TEMPERATURE
3527	-026 VITON	O-RING -026 VITON 75	-20 °C TO 105 °C
3527-1	-026 NM304-75	O-RING -026 NITRILE NM304-75	-54 °C TO 105 °C



9	E20 WHITE	18	E20 BROWN		
8	E20 VIOLET	17	E20 BLUE		
7	E20 ORG	16	E20 BLACK	25	E20 GREEN
6	E20 WHITE	15	E20 ORG	24	E20 BLUE
5	E20 GRAY	14	E20 YLW/WHT	23	E20 GRAY
4	E20 VIOLET	13	E20 YELLOW	22	E20 ORG
3	E20 BLACK	12	E20 BLUE	21	E20 BLACK
2	E20 WHITE	11	E20 GRAY	20	E20 BROWN
1	E20 YLW/WHT	10	E20 VIOLET	19	E20 YELLOW
PIN	PART#	PIN	PART#	PIN	PART#

16	1	171-025-203L001	RCPT D-SUB 25 #20 SOCKETS PBT INSULATOR, NICKEL PLATED STEEL SHELL, GOLD PLATED BRASS SOCKETS
15	2	E20 YELLOW	WIRE 20E MIL-W-16878/4 .01 7/#28
14	2	E20 BROWN	WIRE 20E MIL-W-16878/4 .01 7/#28
13	3	E20 ORG	WIRE 20E MIL-W-16878/4 .01 7/#28
12	1	E20 GREEN	WIRE 20E MIL-W-16878/4 .01 7/#28
11	3	E20 BLUE	WIRE 20E MIL-W-16878/4 .01 7/#28
10	3	E20 GRAY	WIRE 20E MIL-W-16878/4 .01 7/#28
9	3	E20 VIOLET	WIRE 20E MIL-W-16878/4 .01 7/#28
8	3	E20 WHITE	WIRE 20E MIL-W-16878/4 .01 7/#28
7	3	E20 BLACK	WIRE 20E MIL-W-16878/4 .01 7/#28
6	2	E20 YLW/WHT	WIRE 20E MIL-W-16878/4 .01 7/#28
5	2	JACKPOST 4-40	"P" STYLE 4-40 UNC
4	1	SEE TABLE	SEE TABLE
3	A/R	PAVE-Seal 150	EPOXY BLACK
2	1	3526	PLATE TOP SS D-SUB 25
1	1	171-025-103L001	PLUG D-SUB 25 #20 PINS PBT INSULATOR, NICKEL PLATED STEEL SHELL, GOLD PLATED BRASS PINS
ITEM	QTY	PART NUMBER	DESCRIPTION



NOTES:

- 3527 ONLY: HE LEAK TEST @ 1 ATM 1X10⁻⁸ CC/SEC OR LESS. 3527-1 ONLY: LEAK TEST 150 PSI, NO BUBBLES 30 SECONDS MINIMUM. A GREEN PAINT DOT ON THE ATMOSPHERE SIDE INDICATES THE PART HAS PASSED THE SPECIFIED LEAK TEST.
- HYPOT 630 VDC 500 MEGOHMS MINIMUM 0.01 SECOND MINIMUM WIRE TO WIRE WITH MATING CONNECTOR.
- CONTINUITY TEST <60 MILLIOhms MATING CONNECTOR TO WIRE ENDS.
- ALL TESTS ARE PERFORMED AT ROOM TEMPERATURE.
- ALL PARTS MUST PASS ALL TESTS.
- COSMETIC SURFACE VOIDS NOT ON O-RING SEALING SURFACES ARE ACCEPTABLE BASED ON THE SEAL'S DIAMETER:
 <= .5 [12.7] SEAL DIAMETER: ∅.035 [.89] MAX ALLOWED VOID SIZE
 > .5 [12.7] SEAL DIAMETER: ∅.060 [1.5] MAX ALLOWED VOID SIZE
- REF-OPERATING TEMPERATURE RANGE PER TABLE.
- DIMENSIONS ARE INCHES [millimeters].
- ITEM 16 (MATING CONNECTOR) IS INCLUDED, BUT NOT SHOWN.

ALL DIMENSIONS AND TOLERANCES APPLY TO FINISHED PART IN INCHES.
 ALLOWABLE TOLERANCES UNLESS SPECIFIED OTHERWISE: NONE ±0.5
 X.X DECIMAL ±0.1 X.XX DECIMAL ±0.02 X.XXX DECIMAL ±0.005
 ANGLES ±1 DEGREE SURFACE FINISH 128 microinch RMS

PAVE technology co.
 2751 Thunderhawk Court
 Dayton, OH 45414-3445
 U.S.A.
 tel (937) 890-1100
 fax (937) 8905165
 www.pavetechnologyco.com

DESCRIPTION
 SP44/13-E-150-25-TE20-DSUB25-24

PART NUMBER
3527

MATERIAL NOTED

REVISION LEVEL
 J

PROJECTION