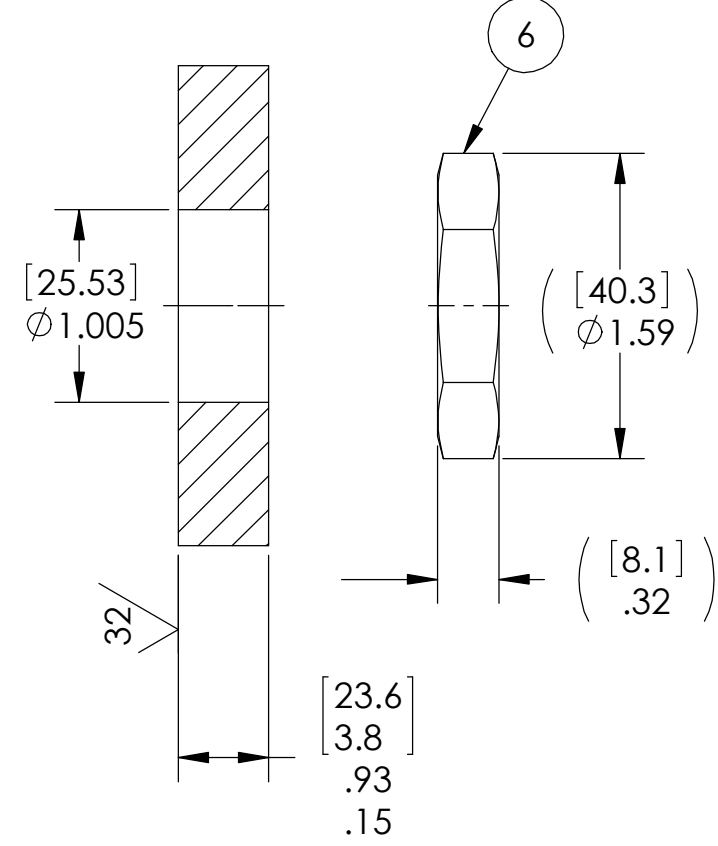


VS15L INSTALLATION PORT



NOTES:

1. LEAK TEST: 80 PSI, NO BUBBLES 4 MINUTES MINIMUM. A GREEN PAINT DOT ON THE ATMOSPHERE SIDE INDICATES THE PART HAS PASSED THE TEST.
2. OPTICAL CONTINUITY CHECK, 20 MINIMUM GOOD FIBERS.
3. ALL TESTS ARE PERFORMED AT ROOM TEMPERATURE.
4. ALL PARTS MUST PASS ALL TESTS.
5. TUBING/FIBER POSITIONING IS APPROXIMATE & VARIABLE.
6. COSMETIC SURFACE VOIDS NOT ON O-RING SEALING SURFACES ARE ACCEPTABLE BASED ON THE SEAL'S DIAMETER:  
 <= .5 [12.7] SEAL DIAMETER:  $\phi$ .035 [.89] MAX ALLOWED VOID SIZE  
 > .5 [12.7] SEAL DIAMETER:  $\phi$ .060 [1.5] MAX ALLOWED VOID SIZE
7. REF-OPERATING TEMPERATURE -20°C TO 85°C.
8. DIMENSIONS ARE INCHES [millimeters].
9. PAVE-SEAL CAN BE A BI-DIRECTIONAL HERMETIC SEAL FOR VACUUM AND MOST PRESSURES. FOR PRESSURES ABOVE 150 PSI (10 BAR), CHECK WITH SALES ENGINEERING.

ITEM	QTY	PART NUMBER	DESCRIPTION
6	1	0183	NUT VS15-SS
5	1	-215 VITON	O-RING -215 VITON 75
4	5	TFT-200-20	TUBING .034 TEFLON ASTM D 3295 CLEAR
3	SEE NOTE 2 30*	SMF-28E+FIBER	FIBER OPTIC SINGLE MODE 28e+FIBER
2	A/R	PAVE-Seal 150	EPXY BLACK
1	1	0161	HOUSING VS15L-SS

**PAVE technology co.**  
 2751 Thunderhawk Court  
 Dayton, OH 45414-3445  
 U.S.A.  
 tel (937) 890-1100  
 fax (937) 8905165  
 www.pavetechnologyco.com

DESCRIPTION  
 VS15L-SS-150-20-SMF28E-48-48

PART NUMBER <b>3591</b>	MATERIAL NOTED
REVISION LEVEL A	PROJECTION ☉

ALL DIMENSIONS AND TOLERANCES APPLY TO FINISHED PART IN INCHES.  
 ALLOWABLE TOLERANCES UNLESS SPECIFIED OTHERWISE: NONE ±0.5  
 X.X DECIMAL ±0.1 X.XX DECIMAL ±0.02 X.XXX DECIMAL ±0.005  
 ANGLES ±1 DEGREE SURFACE FINISH 128 microinch RMS