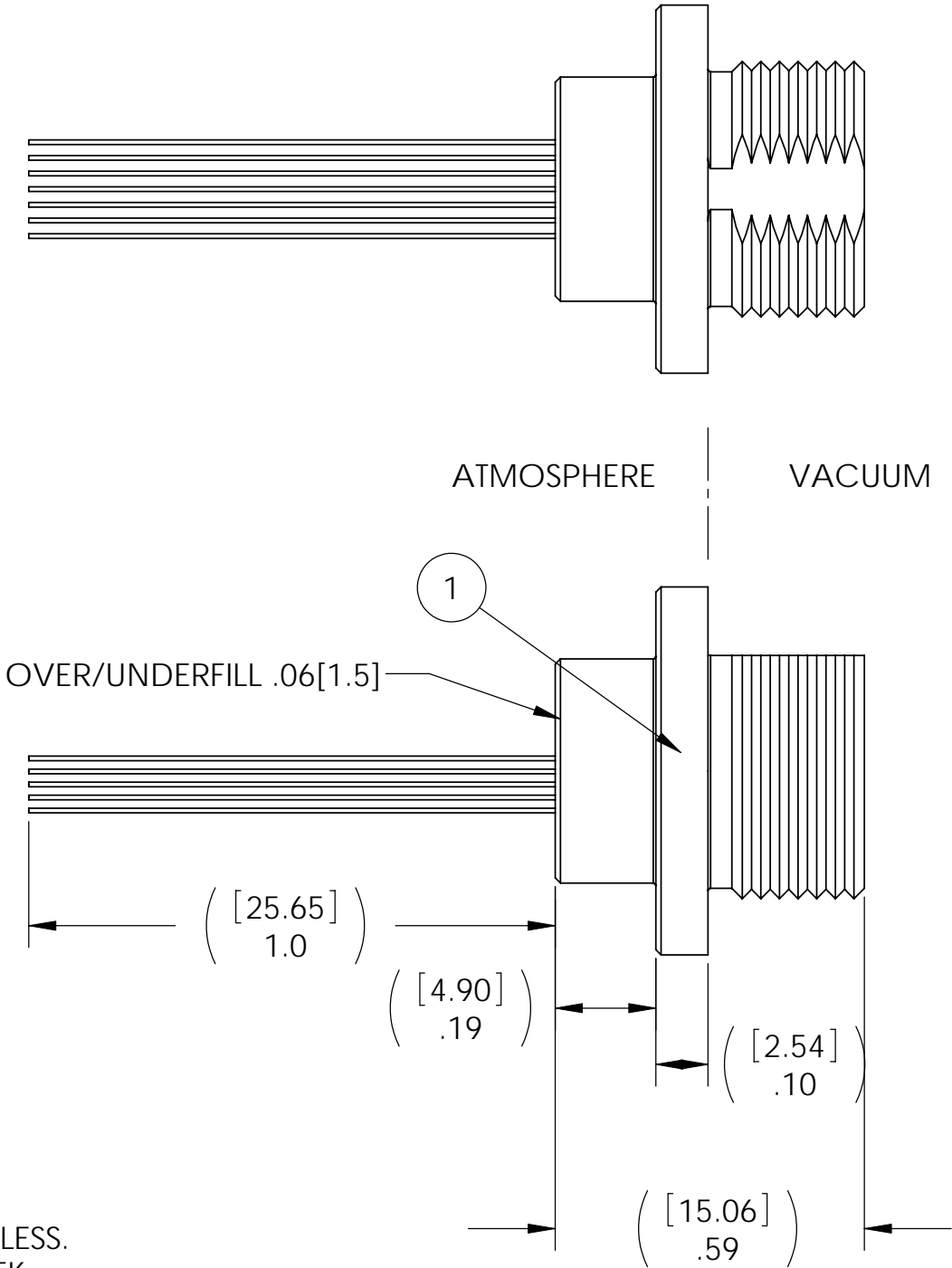
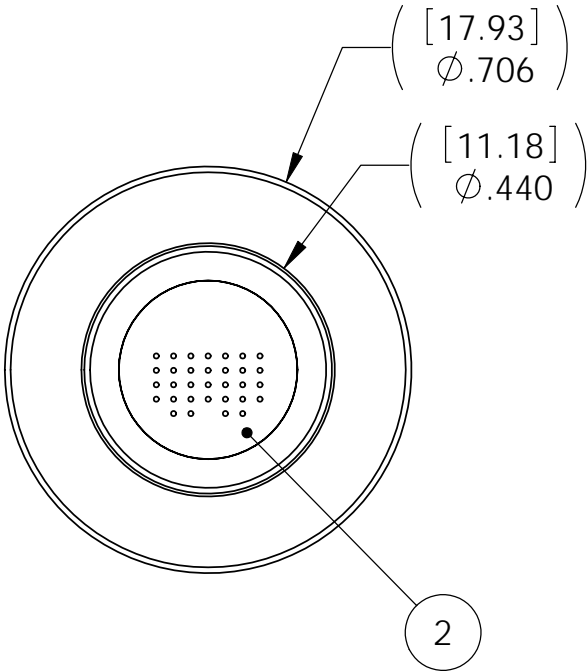
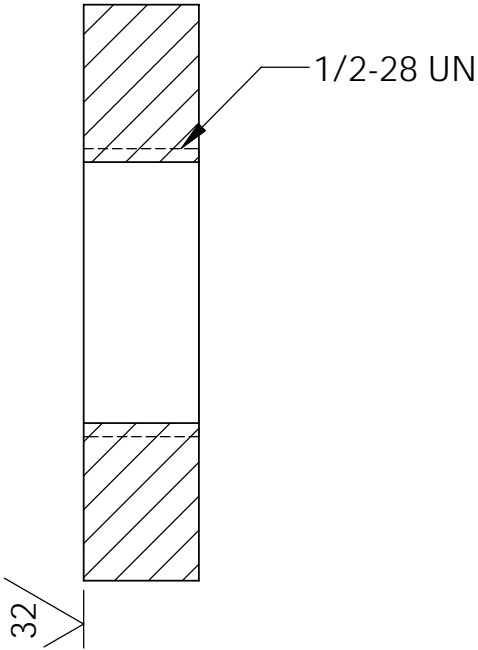


ISSUE LET.	ALTERATIONS	CHANGED BY	DATE



INSTALLATION PORT



PAVE will meet the assembly and test specifications of the customer as documented on this assembly drawing. Any changes must be approved by PAVE.

<div> <div>PAVE technology co.</div> <div> 2751 Thunderhawk Court Dayton, OH 45414-3445 U.S.A. tel (937) 890-1100 fax (937) 8905165 www.pavetechnologyco.com </div> </div>			
DESCRIPTION PAVE-Mate® II Connectors			
C64-AL-150-32-32-C64-1			
MATERIAL			
NOTED			
DR. BY MBN	APPROVED BY	DRAWN FROM CRISTCA	
CH'D BY	DATE 26 JULY 10	SCALE 3:1	
PART NUMBER		1	REVISION LEVEL -
3831		2	PROJECTION

- NOTES:
- HE LEAK TEST VACUUM 10X10⁻⁷ CC/SEC OR LESS. O-RING FOR LEAK TESTING SUPPLIED BY CRISTEK.
 - HYPOT 100 VDC 500 MEGOHMS MINIMUM 0.01 SECOND MINIMUM WIRE TO WIRE AND HOUSING.
 - ALL TESTS ARE PERFORMED AT ROOM TEMPERATURE.
 - ALL PARTS MUST PASS ALL TESTS.
 - WIRE POSITIONING IS APPROXIMATE & VARIABLE.
 - DIMENSION IS OVER-ALL-LENGTH EXCLUDING OVERFILL ON PRESSURE SIDE OF HOUSING.
 - REF-OPERATING TEMPERATURE -40°C TO 125°C.

FINISH

ALL DIMENSIONS AND TOLERANCES APPLY TO FINISHED PART IN INCHES.
 ALLOWABLE TOLERANCES UNLESS SPECIFIED OTHERWISE: NONE ±0.5
 X.X DECIMAL ±0.1 X.XX DECIMAL ±0.02 X.XXX DECIMAL ±0.005
 ANGLES ±1 DEGREE SURFACE FINISH 128 microinch RMS

2	A/R	PAVE-Seal 150	EPOXY BLACK
1	1	C64-00002-01	BWSK-0205,nano, herm,32 pos, top assy, pin side, 3-11-10
ITEM	QTY	PART NUMBER	DESCRIPTION