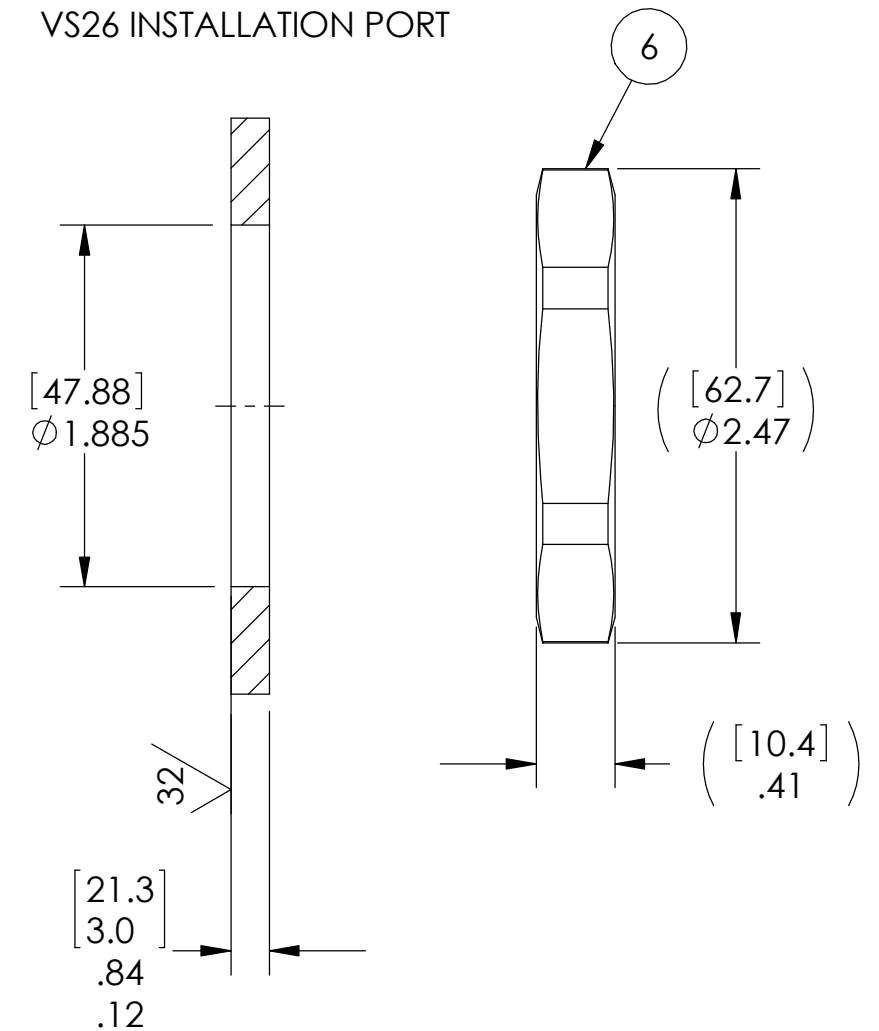


VS26 INSTALLATION PORT



NOTES:

1. HE LEAK TEST VACUUM 1X10⁻⁸ CC/SEC OR LESS.
2. HYPOT 630 VDC 500 MW MINIMUM 0.01 SECOND MINIMUM PIN TO PIN AND HOUSING WITH MATING CONNECTORS.
3. CONTINUITY TEST WITH MATING CONNECTORS < .5 OHM.
4. ALL TESTS ARE PERFORMED AT ROOM TEMPERATURE.
5. ALL PARTS MUST PASS ALL TESTS.
6. COSMETIC SURFACE VOIDS NOT ON O-RING SEALING SURFACES ARE ACCEPTABLE BASED ON THE SEAL'S DIAMETER:
 <= .5 [12.7] SEAL DIAMETER: Ø .035 [.89] MAX ALLOWED VOID SIZE
 > .5 [12.7] SEAL DIAMETER: Ø .060 [1.5] MAX ALLOWED VOID SIZE
7. ITEMS 7, 8, & 9 ARE INCLUDED (NOT SHOWN) UNLESS "NP" IS ADDED TO THE PAVE PART NUMBER & DESCRIPTION. 3938NP DOES NOT INCLUDE PLUGS OR STRAIN RELIEFS.
8. REF-OPERATING TEMPERATURE RANGE PER TABLE.
9. DIMENSIONS ARE INCHES [millimeters].
10. PAVE-SEAL CAN BE A BI-DIRECTIONAL HERMETIC SEAL FOR VACUUM AND MOST PRESSURES. FOR PRESSURES ABOVE 150 PSI (10 BAR), CHECK WITH SALES ENGINEERING.

3938-1	-226 NITRILE	-34 TO 107°C
3938	-226 VITON	-20 TO 120°C
PART #	O-RING	RANGE OF USE

9	2	M85049/38-25N	STRAIN RELIEF 999 25	*SEE NOTE 7
8	1	26FJ19PN	PLUG 19#12 PIN	*SEE NOTE 7
7	1	26FJ19SN	PLUG 19#12 SOC	*SEE NOTE 7
6	1	0185	NUT VS26-SS	
5	1	SEE TABLE	O-RING -226	*SEE TABLE
4	1	20FJ19SN	RCPT 19#12 SOC NICKEL PLATED ALUMINUM SHELL GOLD PLATED COPPER ALLOY/SS HOOD CONTACTS	
3	1	20FJ19PN	RCPT 19#12 PIN	
2	A/R	PAVE-Seal 150	EPOXY BLACK	
1	1	4007	HOUSING VS26-SS	
ITEM	QTY	PART NUMBER	DESCRIPTION	

2751 Thunderhawk Court
Dayton, OH 45414-3445
U.S.A.
tel (937) 890-1100
fax (937) 8905165
www.pavetechnologyco.com

PAVE technology co.

DESCRIPTION
VS26-SS-150-19-12-99920PS

PART NUMBER
3938

MATERIAL NOTED

REVISION LEVEL
A

PROJECTION

ALL DIMENSIONS AND TOLERANCES APPLY TO FINISHED PART IN INCHES.
 ALLOWABLE TOLERANCES UNLESS SPECIFIED OTHERWISE: NONE ±0.5
 X.X DECIMAL ±0.1 X.XX DECIMAL ±0.02 X.XXX DECIMAL ±0.005
 ANGLES ±1 DEGREE SURFACE FINISH 128 microinch RMS