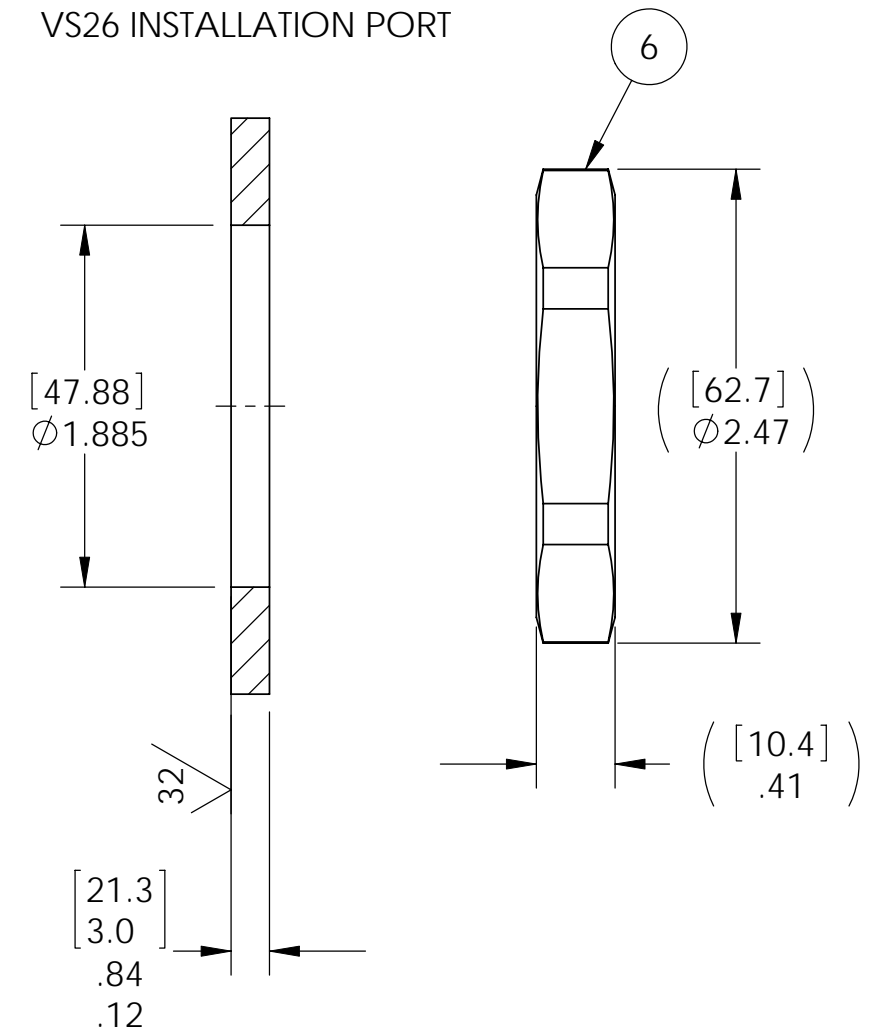



VS26 INSTALLATION PORT



NOTES:

1. HE LEAK TEST VACUUM 10X10⁻⁹ CC/SEC OR LESS.
2. HYPOT 630 VDC 500 MΩ MINIMUM 0.01 SECOND MINIMUM PIN TO PIN AND HOUSING WITH MATING CONNECTORS.
3. CONTINUITY TEST WITH MATING CONNECTORS < .5 Ω.
4. ALL TESTS ARE PERFORMED AT ROOM TEMPERATURE.
5. ALL PARTS MUST PASS ALL TESTS.
6. VOIDS LARGER THAN Ø0.035 [.89] ARE NOT ACCEPTABLE.
7. ITEMS 7, 8, & 9 ARE INCLUDED (NOT SHOWN) UNLESS "NP" IS ADDED TO THE PAVE PART NUMBER & DESCRIPTION. 3938NP DOES NOT INCLUDE PLUGS OR STRAIN RELIEFS.
8. REF-OPERATING TEMPERATURE RANGE -20°C TO 125°C.
9. DIMENSIONS ARE INCHES [millimeters].
10. PAVE-SEAL CAN BE A BI-DIRECTIONAL HERMETIC SEAL FOR VACUUM AND MOST PRESSURES. FOR PRESSURES ABOVE 150 PSI (10 BAR), CHECK WITH SALES ENGINEERING.

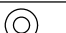

| 9 | 2 | M85049/38-25N | *SEE NOTE 7 | STRAIN RELIEF 999 25 |
|------|-----|---------------|-------------|----------------------|
| 8 | 1 | 26FJ19PN | *SEE NOTE 7 | PLUG 19#12 PIN |
| 7 | 1 | 26FJ19SN | *SEE NOTE 7 | PLUG 19#12 SOC |
| 6 | 1 | 0185 | | NUT VS26-SS |
| 5 | 1 | -226 VITON | | O-RING -226 VITON 75 |
| 4 | 1 | 20FJ19SN | | RCPT 19#12 SOC |
| 3 | 1 | 20FJ19PN | | RCPT 19#12 PIN |
| 2 | A/R | PAVE-Seal 150 | | EPOXY BLACK |
| 1 | 1 | 4007 | | HOUSING VS26-SS |
| ITEM | QTY | PART NUMBER | | DESCRIPTION |


 2751 Thunderhawk Court
 Dayton, OH 45414-3445
 U.S.A.
 tel (937) 890-1100
 fax (937) 8905165
 www.pavetechnologyco.com

DESCRIPTION
 VS26-SS-150-19-12-99920PS

PART NUMBER
3938

MATERIAL NOTED

REVISION LEVEL -
 PROJECTION  

ALL DIMENSIONS AND TOLERANCES APPLY TO FINISHED PART IN INCHES.
 ALLOWABLE TOLERANCES UNLESS SPECIFIED OTHERWISE: NONE ±0.5
 X.X DECIMAL ±0.1 X.XX DECIMAL ±0.02 X.XXX DECIMAL ±0.005
 ANGLES ±1 DEGREE SURFACE FINISH 128 microinch RMS