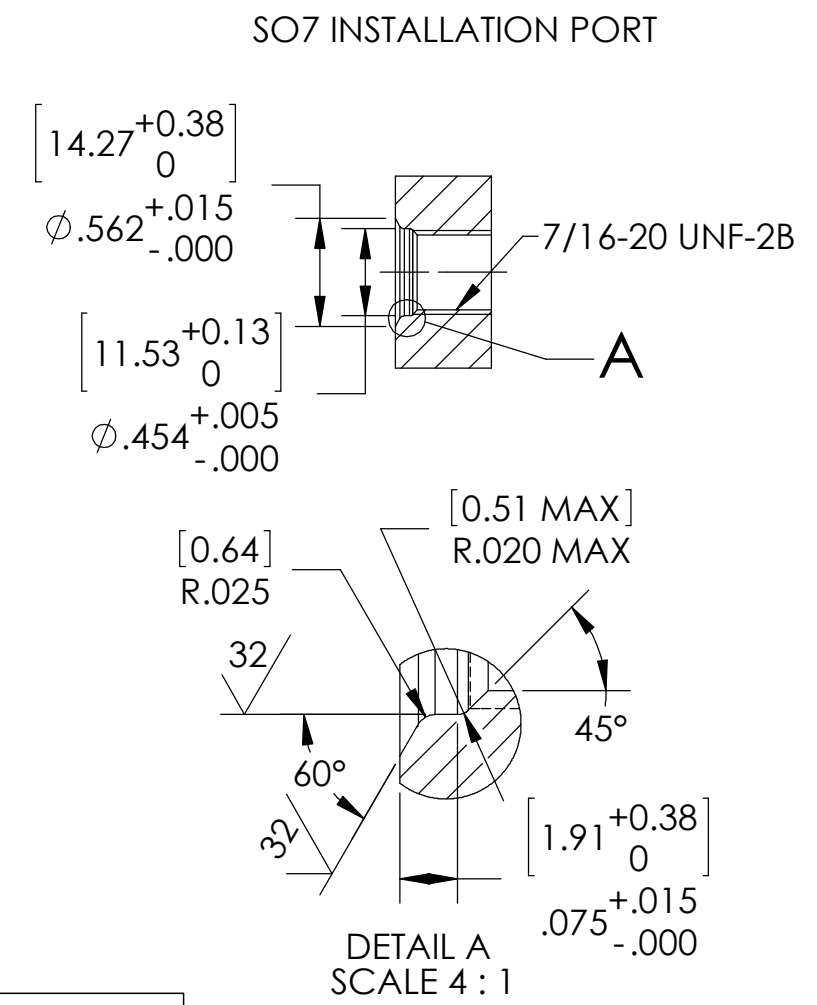
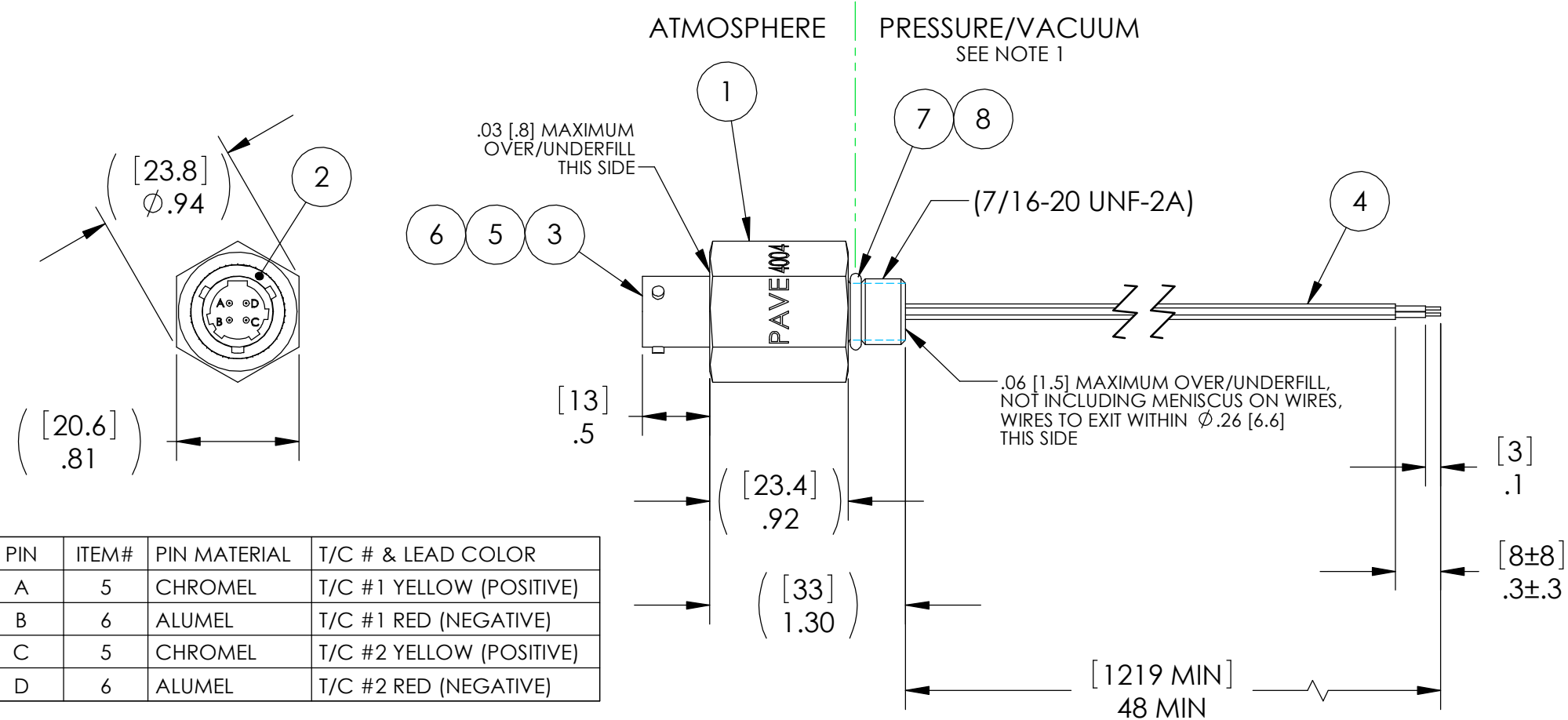


PAVE#	ITEM 7	ITEM 7 DESCRIPTION	ITEM 8	ITEM 8 DESCRIPTION	TEMPERATURE
4004	3-904 FLUORO	O-RING 3-904 FLUOROSILICONE 70	PARKER O-LUBE	LUBRICANT O-RING BARIUM-BASED	-65°C TO 125°C
4004-1	-904 VITON	O-RING -904 VITON 75	FOMBLIN YVAC 3	LUBRICANT O-RING FOMBLIN GREASE	-20°C TO 125°C



PIN	ITEM#	PIN MATERIAL	T/C # & LEAD COLOR
A	5	CHROMEL	T/C #1 YELLOW (POSITIVE)
B	6	ALUMEL	T/C #1 RED (NEGATIVE)
C	5	CHROMEL	T/C #2 YELLOW (POSITIVE)
D	6	ALUMEL	T/C #2 RED (NEGATIVE)

**NOTES:**

- LEAK TESTING, A GREEN PAINT DOT ON THE ATMOSPHERE SIDE INDICATES THE PART HAS PASSED THE SPECIFIED TEST:  
4004 ONLY: LEAK TEST 1800 PSI, NO N2 BUBBLES 30 SECONDS MINIMUM.  
4004-1 ONLY: HE LEAK TEST @ 1 ATM. 1X10<sup>-6</sup> CC/SEC OR LESS.
- HYPOT 630 VDC 500 MEGOHMS MINIMUM 0.01 SECOND MINIMUM WIRE TO WIRE AND HOUSING WITH MATING PLUG.
- ALL TESTS ARE PERFORMED AT ROOM TEMPERATURE.
- ALL PARTS MUST PASS ALL TESTS.
- COSMETIC SURFACE VOIDS NOT ON O-RING SEALING SURFACES ARE ACCEPTABLE BASED ON THE SEAL'S DIAMETER:  
<= .5 [12.7] SEAL DIAMETER: Ø.035 [.89] MAX ALLOWED VOID SIZE  
> .5 [12.7] SEAL DIAMETER: Ø.060 [1.5] MAX ALLOWED VOID SIZE
- ITEMS 9, 10, & 11 (MATING PLUG W/CONTACTS) ARE INCLUDED BUT NOT SHOWN.
- REF-OPERATING TEMPERATURE RANGE SEE TABLE.
- PAVE-SEAL CAN BE A BI-DIRECTIONAL HERMETIC SEAL FOR VACUUM AND MOST PRESSURES. FOR PRESSURES ABOVE 150 PSI (10 BAR), CHECK WITH SALES ENGINEERING.

11	2	M39029/32-245	SOCKET #20AWG ALUMEL
10	2	M39029/32-244	SOCKET #20AWG CHROMEL
9	1	SC3126F8-4S	PLUG 4#20 SOC 26482 SERIES I CRIMP
8	A/R	SEE TABLE	SEE TABLE
7	1	SEE TABLE	SEE TABLE
6	2	M39029-31-226	PIN #20 CONTACT ALUMEL
5	2	M39029-31-225	PIN #20 CONTACT CHROMEL
4	2	KT24	CABLE T/C TYPE K 24AWG TEFLON
3	1	SC3122E8-4P	RCPT 4#20 PIN CRIMP 26482 SERIES
2	A/R	PAVE-Seal 150	EPOXY BLACK
1	1	4055	HOUSING SO7L-SS
ITEM	QTY	PART NUMBER	DESCRIPTION

**PAVE technology co.**  
 2751 Thunderhawk Court  
 Dayton, OH 45414-3445  
 U.S.A.  
 tel (937) 890-1100  
 fax (937) 8905165  
 www.pavetechnologyco.com

DESCRIPTION  
SO7L-SS-150-2P-KT24-3122P-48

PART NUMBER \*SEE TABLE & NOTE 1  
**4004**

MATERIAL NOTED

REVISION LEVEL B

PROJECTION

ALL DIMENSIONS AND TOLERANCES APPLY TO FINISHED PART IN INCHES.  
 ALLOWABLE TOLERANCES UNLESS SPECIFIED OTHERWISE: NONE ±0.5  
 X.X DECIMAL ±0.1 X.XX DECIMAL ±0.02 X.XXX DECIMAL ±0.005  
 ANGLES ±1 DEGREE SURFACE FINISH 128 microinch RMS