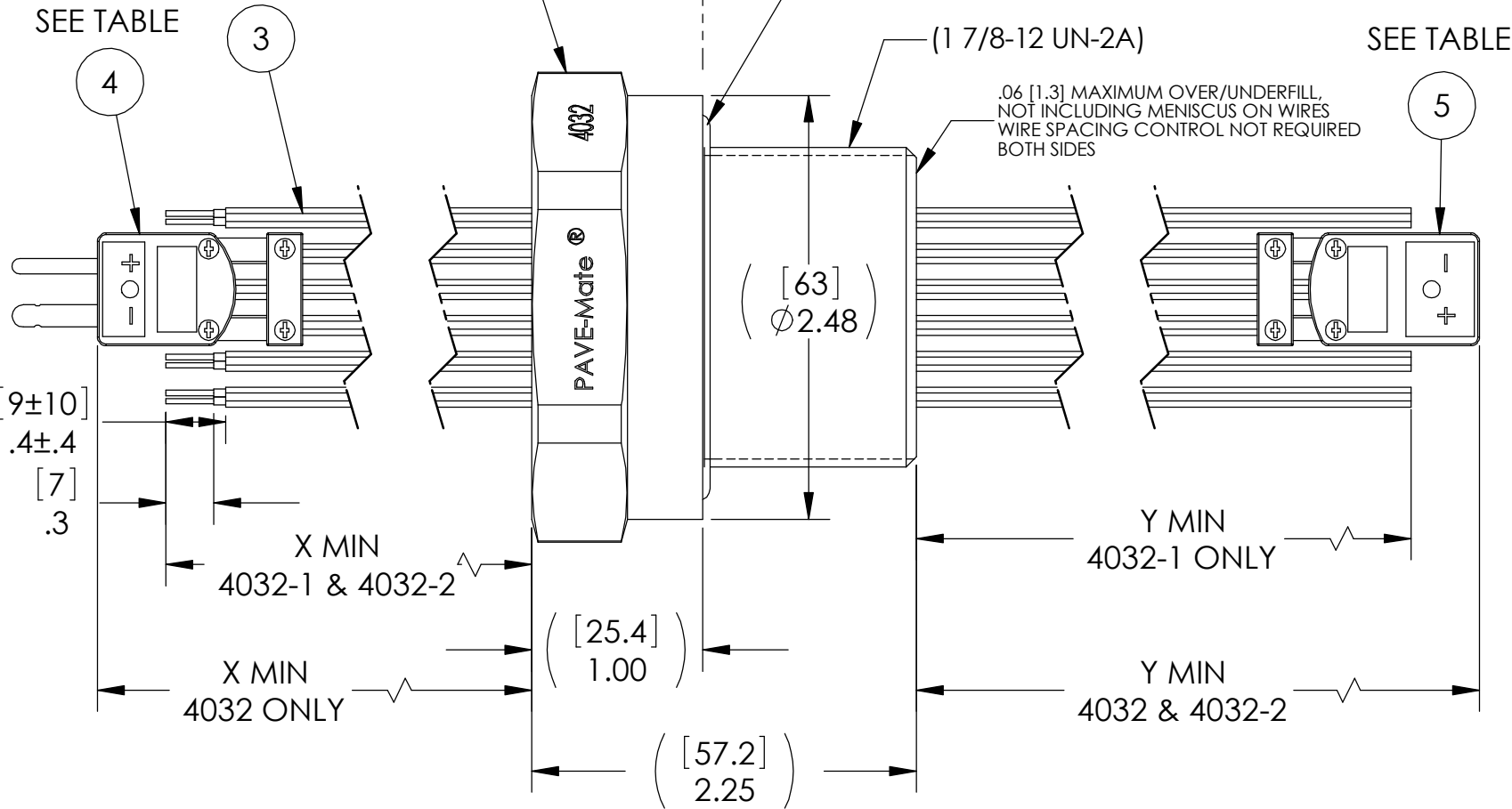
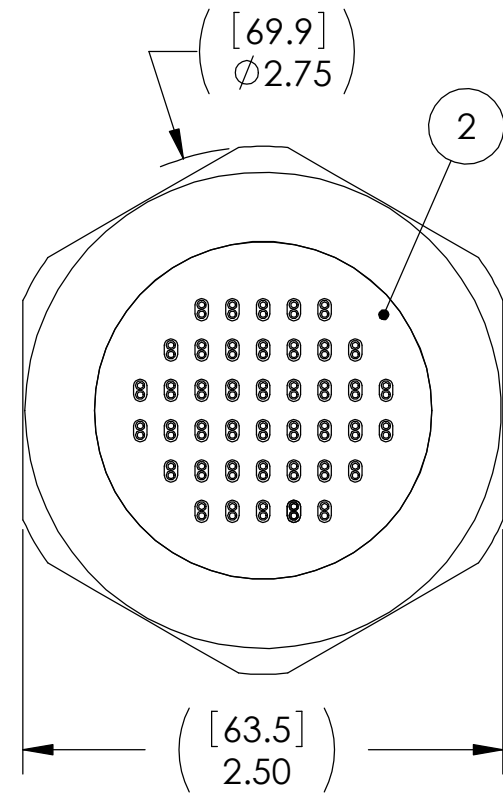
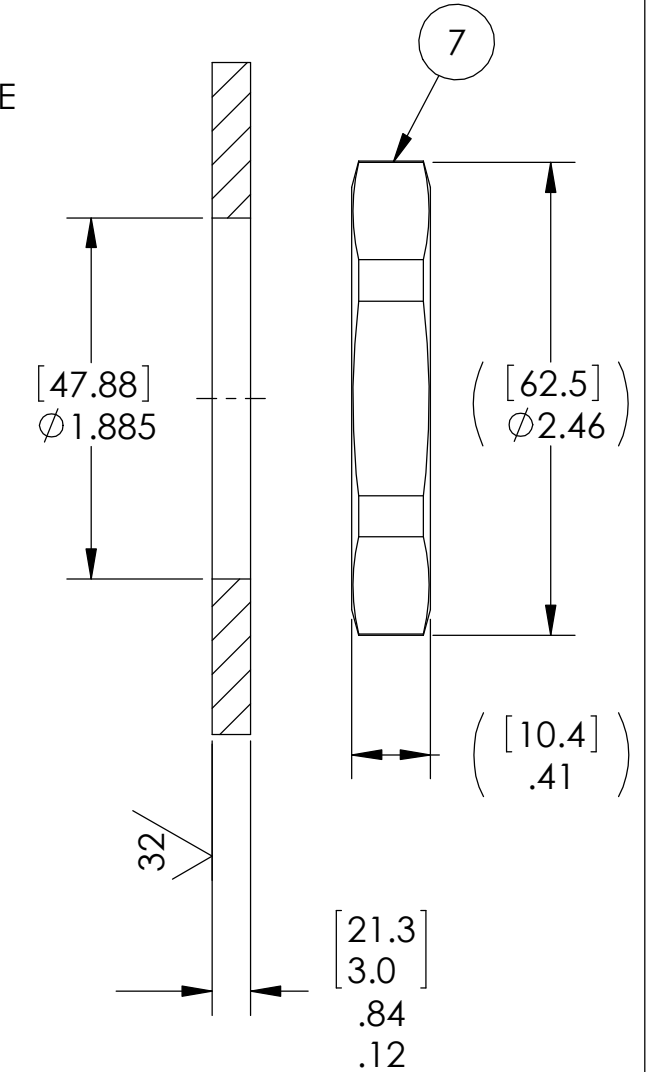


REMAINING CONNECTORS NOT SHOWN FOR CLARITY IN ALL VIEWS



VS26 INSTALLATION PORT



NOTES:

- HE LEAK TEST @ 1 ATM 1x10⁻⁶ CC/SEC OR LESS. A GREEN PAINT DOT ON THE ATMOSPHERE SIDE INDICATES THE PART HAS PASSED THE TEST.
- HYPOT 630 VDC 500 MEGOHMS MINIMUM 0.01 SECOND MINIMUM WIRE TO WIRE AND HOUSING WITH MATING CONNECTORS.
- THE BLUE LEAD FROM ITEM 3 WILL BE CONNECTED TO THE POSITIVE (+) TERMINAL & THE RED LEAD WILL BE CONNECTED TO THE NEGATIVE (-) TERMINAL OF ITEMS 4 & 5 FOR APPLICABLE ASSEMBLIES (SEE TABLE)
- THERE MUST BE A MINIMUM OF 40 OF ITEM 3, EACH ONE WILL BE CONNECTORIZED OR NOT ACCORDING TO THE TABLE. SPARE THERMOCOUPLES WILL NOT BE CONNECTORIZED.
- ALL TESTS ARE PERFORMED AT ROOM TEMPERATURE.
- ALL PARTS MUST PASS ALL TESTS.
- WIRE POSITIONING IS APPROXIMATE & VARIABLE.
- COSMETIC SURFACE VOIDS NOT ON O-RING SEALING SURFACES ARE ACCEPTABLE BASED ON THE SEAL'S DIAMETER:
 <= .5 [12.7] SEAL DIAMETER: Ø .035 [.89] MAX ALLOWED VOID SIZE
 > .5 [12.7] SEAL DIAMETER: Ø .060 [1.5] MAX ALLOWED VOID SIZE
- REF-OPERATING TEMPERATURE -20°C TO 125°C.
- DIMENSIONS ARE INCHES [millimeters].
- PAVE-SEAL CAN BE A BI-DIRECTIONAL HERMETIC SEAL FOR VACUUM AND MOST PRESSURES. FOR PRESSURES ABOVE 150 PSI (10 BAR), CHECK WITH SALES ENGINEERING.

PAVE#	DESCRIPTION	X	Y
4032-2	VS26-SS-150-40P-TT20-60-24T	60 [1524] (NO CONNECTOR)	24 [610] (W/CONNECTOR)
4032-1	VS26-SS-150-40P-TT20-60-36	60 [1524] (NO CONNECTOR)	36 (NO CONNECTOR)
4032	VS26-SS-150-40P-TT20-72T-120T	72 [1829] (W/CONNECTOR)	120 [3048] (W/CONNECTOR)

ITEM	QTY	PART NUMBER	DESCRIPTION
7	1	0185	NUT VS26-SS
6	1	-226 VITON	O-RING -226 VITON 75
5	40*	SMPW-CC-T-F	CONNECTOR FEMALE TYPE T GLASS FILLED NYLON W/WINDOW & SR
4	40*	SMPW-CC-T-M	CONNECTOR MALE TYPE T GLASS FILLED NYLON W/WINDOW & SR
3	42*	TT20	CABLE T/C TYPE T #20 TEFLON FEP
2	A/R	PAVE-Seal 150	EPOXY BLACK
1	1	1531	HOUSING VS26-SS

ALL DIMENSIONS AND TOLERANCES APPLY TO FINISHED PART IN INCHES.
 ALLOWABLE TOLERANCES UNLESS SPECIFIED OTHERWISE: NONE ±0.5
 X.X DECIMAL ±0.1 X.XX DECIMAL ±0.02 X.XXX DECIMAL ±0.005
 ANGLES ±1 DEGREE SURFACE FINISH 128 microinch RMS

PAVE technology co.
 2751 Thunderhawk Court
 Dayton, OH 45414-3445
 U.S.A.
 tel (937) 890-1100
 fax (937) 8905165
 www.pavetechnologyco.com

DESCRIPTION
SEE TABLE

PART NUMBER
4032

MATERIAL NOTED
REVISION LEVEL B

PROJECTION