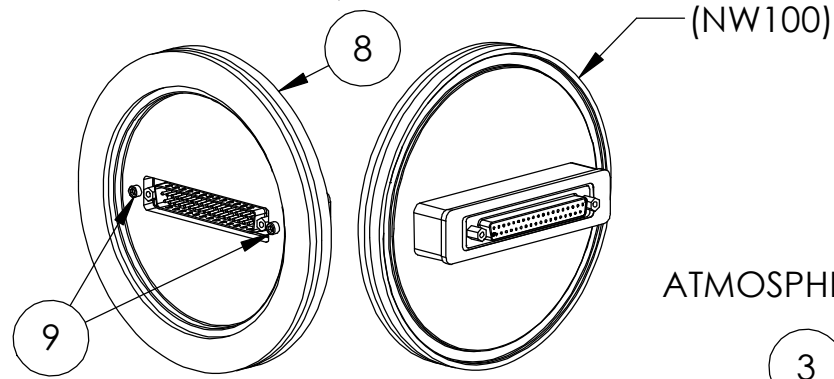
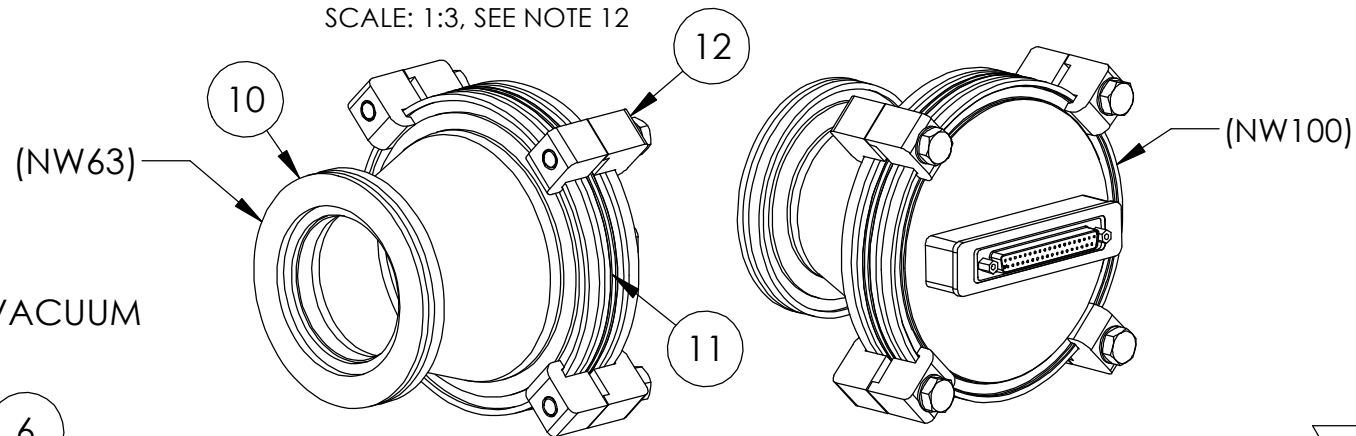


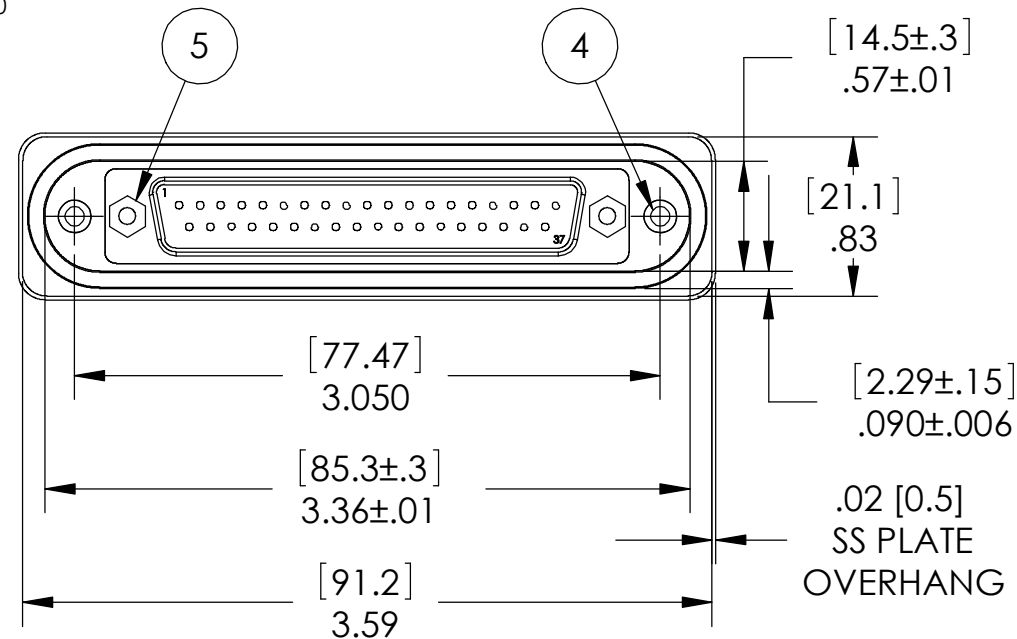
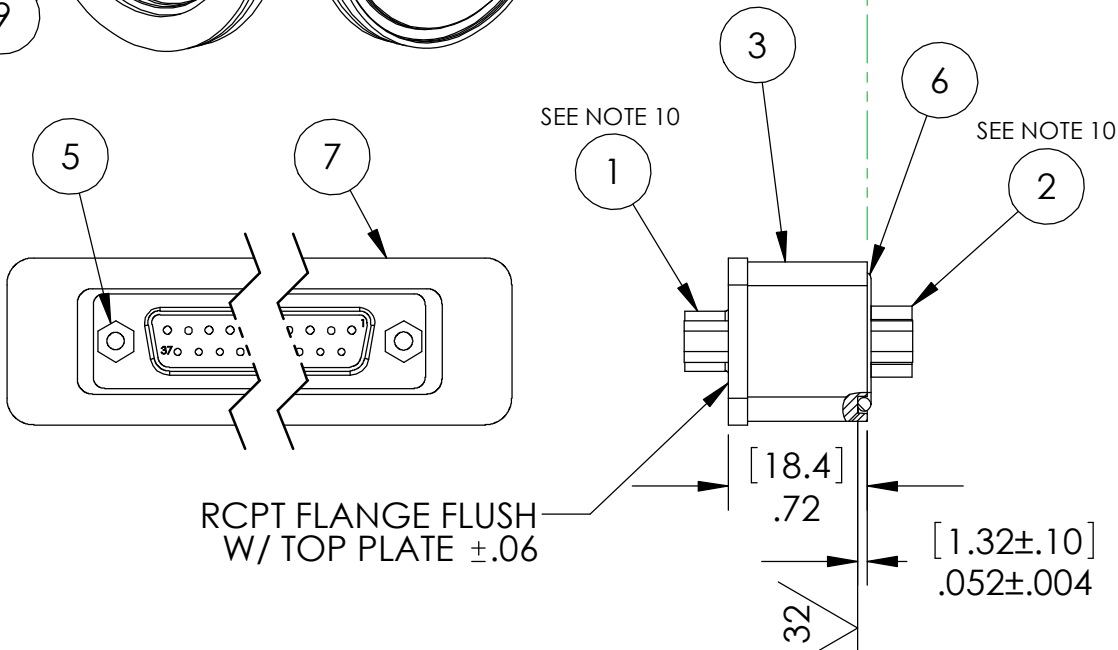
PAVE 4058-NW100
SCALE: 1:3, SEE NOTE 11



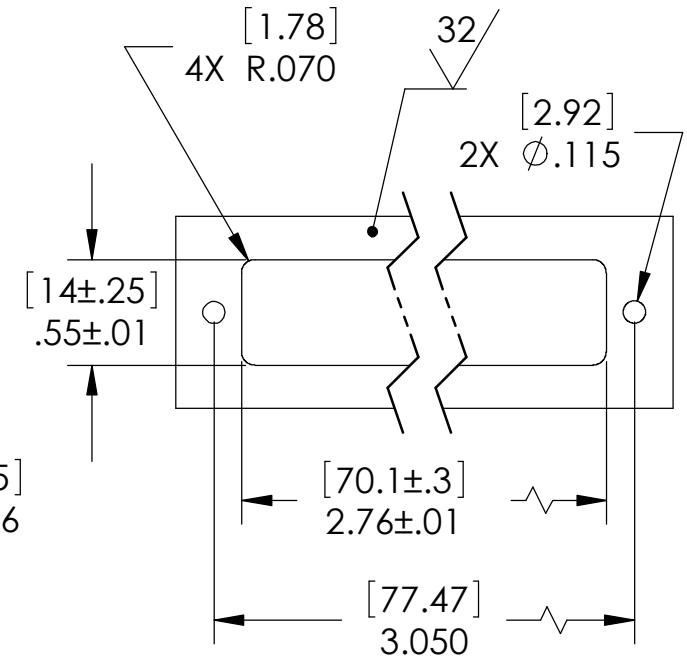
PAVE 4058-NW63
SCALE: 1:3, SEE NOTE 12



ATMOSPHERE VACUUM



SP58/13 INSTALLATION PORT
SECURE PART WITH APPROPRIATE
LENGTH #4-40 SCREWS



NOTES:

- HE LEAK TEST @ 1 ATM. 1X10⁻⁶ CC/SEC OR LESS. A GREEN PAINT DOT ON THE ATMOSPHERE SIDE INDICATES THE PART HAS PASSED THE TEST.
- HYPOT 630 VDC 500 MEGOHMS MINIMUM 0.01 SECOND MINIMUM CONDUCTOR TO CONDUCTOR AND RECEPTACLE FLANGES WITH MATING CONNECTORS.
- CONTINUITY TEST <0.5 Ohms MATING CONNECTOR TO MATING CONNECTOR.
- ALL TESTS ARE PERFORMED AT ROOM TEMPERATURE.
- ALL PARTS MUST PASS ALL TESTS.
- COSMETIC SURFACE VOIDS NOT ON O-RING SEALING SURFACES ARE ACCEPTABLE BASED ON THE SEAL'S DIAMETER:
<= .5 [12.7] SEAL DIAMETER: Ø.035 [.89] MAX ALLOWED VOID SIZE
> .5 [12.7] SEAL DIAMETER: Ø.060 [1.5] MAX ALLOWED VOID SIZE
- REF-OPERATING TEMPERATURE RANGE -20°C TO 105°C.
- DIMENSIONS ARE INCHES [millimeters].
- ALCOHOL OR FOMBLIN YVAC 3 MAY BE USED TO LUBRICATE O-RINGS FOR VACUUM HELIUM LEAK TESTING.
- 4058-R IS REVERSED WITH PINS ON ATMOSPHERE SIDE AND SOCKETS ON THE VACUUM SIDE.
- 4058-NW100 ONLY SHIPS INSTALLED AND LEAK TESTED, PER NOTE 1, IN ITEM 8 (NW100 ADAPTER) SECURED WITH ITEM 9 (#4-40 SCREWS).
- 4058-NW63 ONLY SHIPS INSTALLED AND LEAK TESTED, PER NOTE 1, IN ITEM 8 (NW100 ADAPTER) SECURED WITH ITEM 9 (#4-40 SCREWS) THEN MOUNTED TO ITEM 10 (NW100-63 REDUCER), WITH ITEM 11 (VITON CENTERING RING) IN BETWEEN, USING ITEMS 12 (DOUBLE CLAW CLAMPS) TO SECURE TOGETHER.

ITEM	QTY	PART NUMBER	DESCRIPTION
12	SEE NOTE 12 4	NW63-100 DCC AL	DOUBLE CLAW CLAMP NW63 THRU NW100 ALUMINUM
11	SEE NOTE 12 1	NW100-CR ALV	RING CENTERING NW100 ALUMINUM WITH VITON O-RING
10	SEE NOTE 12 1	NW100-63	NW100-63 FLANGE CONICAL REDUCER SS
9	SEE NOTE 11 2	4-40X.3125 SHCS	SCREW SHCS 4-40x.3125-SS
8	SEE NOTE 11 1	5699	FLANGE NW100-SS MODIFIED FOR SP58/13
7	1	4096	PLATE TOP SS DSUB 37 PIN
6	1	-036 VITON	O-RING -036 VITON 75
5	4	JACKPOST 4-40	"P" STYLE 4-40 UNC
4	2	YARDLEY#440A5-8	THREADED INSERT SS 4-40 X .12
3	A/R	PAVE-Seal 150	EPOXY BLACK
2	1	171-037-103L001	PLUG D-SUB 37 #20 PINS PBT INSULATOR, NICKEL PLATED STEEL SHELL, GOLD PLATED BRASS PINS
1	1	171-037-203L001	RCPT D-SUB 37 #20 SOCKETS PBT INSULATOR, NICKEL PLATED STEEL SHELL, GOLD PLATED BRASS SOCKETS

ALL DIMENSIONS AND TOLERANCES APPLY TO FINISHED PART IN INCHES.
ALLOWABLE TOLERANCES UNLESS SPECIFIED OTHERWISE: NONE ±0.5
X.X DECIMAL ±0.1 X.XX DECIMAL ±0.02 X.XXX DECIMAL ±0.005
ANGLES ±1 DEGREE SURFACE FINISH 128 microinch RMS

PAVE technology co.
2751 Thunderhawk Court
Dayton, OH 45414-3445
U.S.A.
tel (937) 890-1100
fax (937) 8905165
www.pavetechnologyco.com

DESCRIPTION
SP58/13-E-150-37-20-DSUB-DSUB

PART NUMBER *SEE NOTES 10, 11, & 12
4058*

MATERIAL NOTED

REVISION LEVEL D

PROJECTION