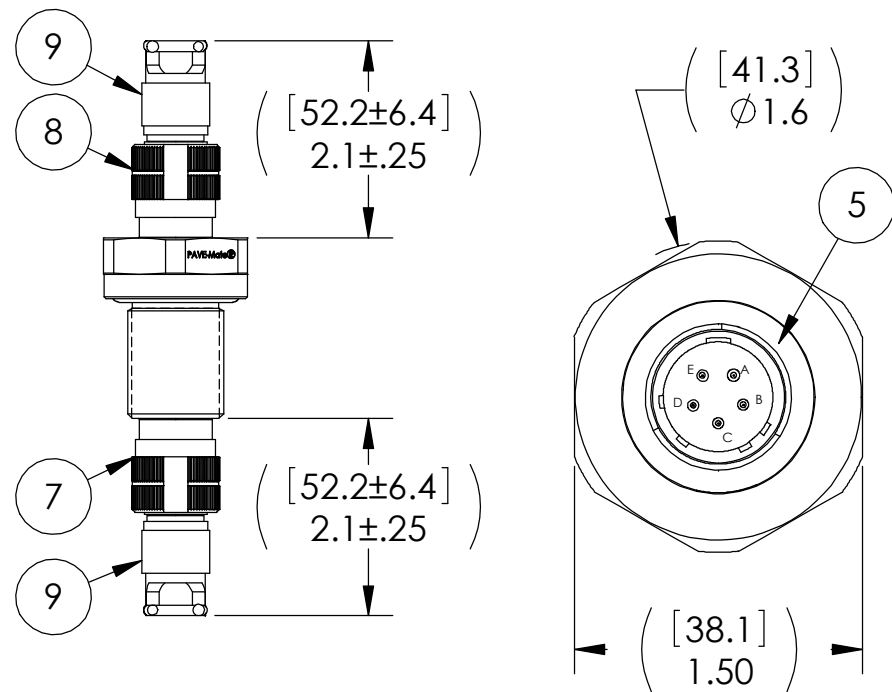
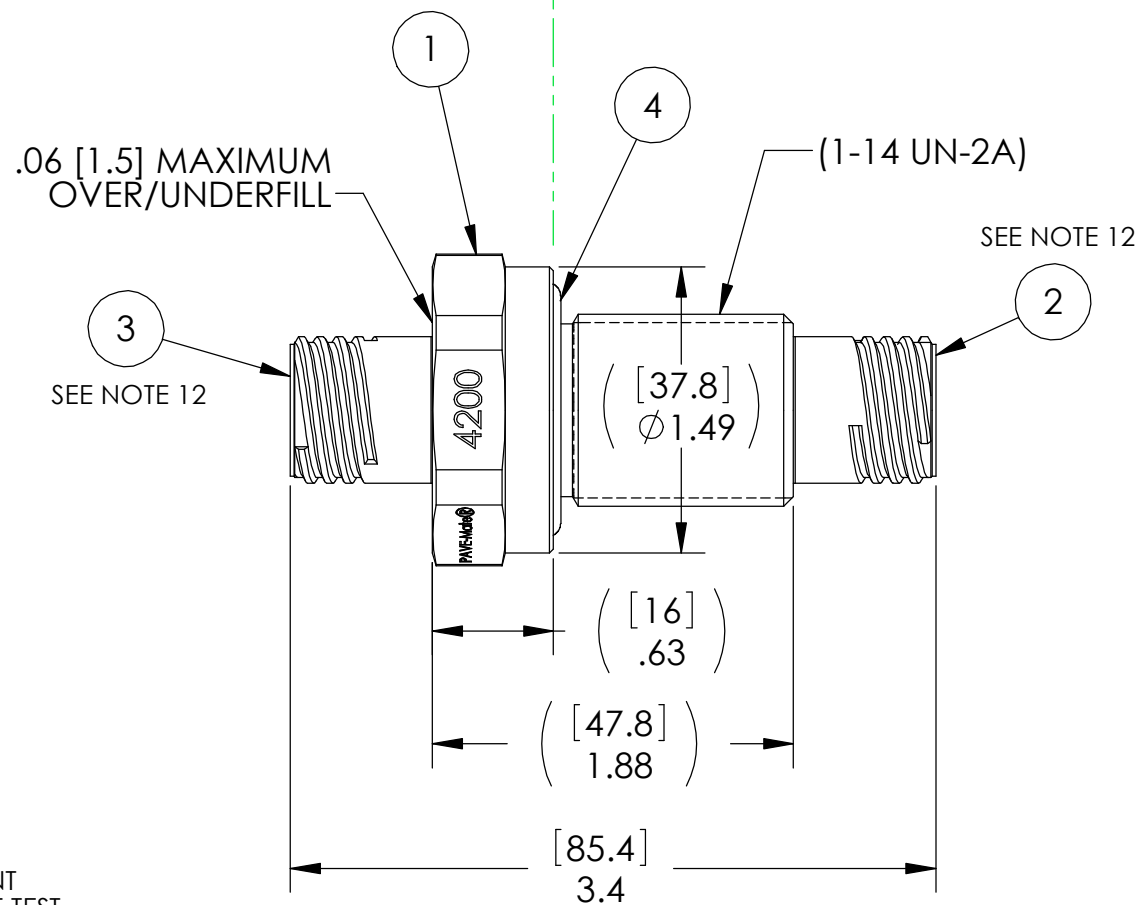


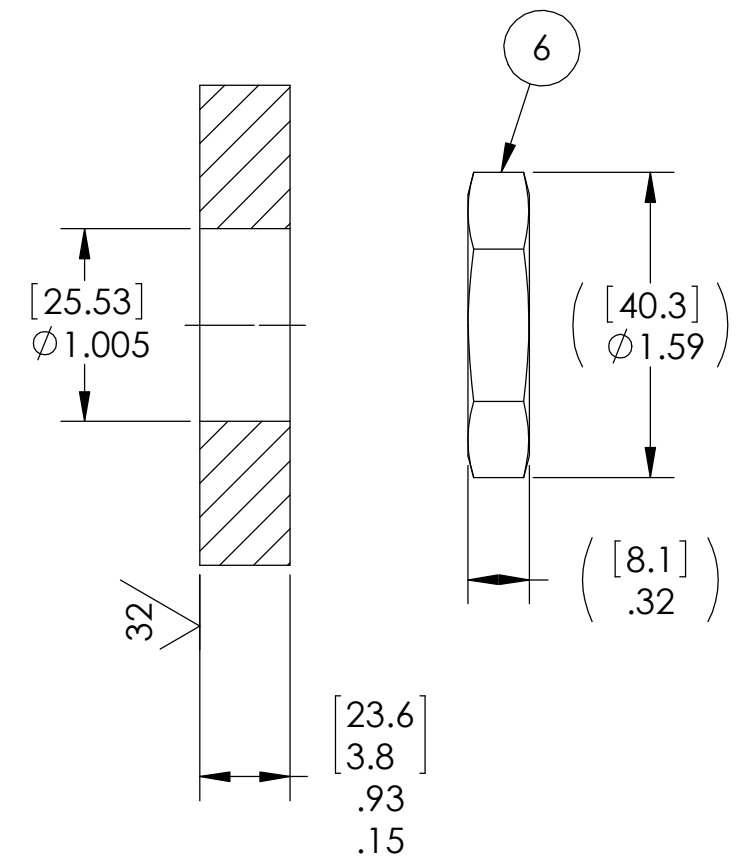
(ASSEMBLED)  
SCALE: 1:2



ATMOSPHERE | VACUUM



VS15L INSTALLATION PORT



NOTES:

1. HE LEAK TEST @ 1 ATM. 1X10<sup>-6</sup> CC/SEC OR LESS. A GREEN PAINT DOT ON THE ATMOSPHERE SIDE INDICATES PART HAS PASSED THE TEST.
2. HYPOT 1000 VDC 500 MEGOHMS MINIMUM 0.01 SECOND MINIMUM PIN TO PIN AND HOUSING WITH MATING CONNECTORS.
3. CONTINUITY TEST <0.5 OHM PIN TO SOCKET WITH MATING CONNECTORS.
4. ALL TESTS ARE PERFORMED AT ROOM TEMPERATURE.
5. ALL PARTS MUST PASS ALL TESTS.
6. ALCOHOL OR FOMBLIN YVAC 3 MAY BE USED TO LUBE O-RINGS FOR VACUUM HELIUM LEAK TESTING.
7. COSMETIC SURFACE VOIDS NOT ON O-RING SEALING SURFACES ARE ACCEPTABLE BASED ON THE SEAL'S DIAMETER:  
<= .5 [12.7] SEAL DIAMETER: Ø .035 [.89] MAX ALLOWED VOID SIZE  
> .5 [12.7] SEAL DIAMETER: Ø .060 [1.5] MAX ALLOWED VOID SIZE
8. REF-OPERATING TEMPERATURE RANGE -60°C TO 120°C.
9. DIMENSIONS ARE INCHES [millimeters].
10. ITEMS 7, 8, & 9 ARE INCLUDED UNLESS "NP" IS ADDED TO THE PAVE PART NUMBER & DESCRIPTION. 4200NP DOES NOT INCLUDE PLUGS OR STRAIN RELIEFS.
11. \*ALTERNATIVE CLOCKING (A, B, C, D, E OR N) IS INDICATED BY APPENDING THE APPROPRIATE LETTER TO THE PART NUMBER AND TO THE PAVE ORDER CODE.
12. \*\*"R" ON THE END OF THE PART NUMBER INDICATES THAT ITEMS 2 & 3 ARE REVERSED.
13. ADDING "-EMI" TO THE PART NUMBER INDICATES AN ELECTRICAL CONNECTION BETWEEN THE RECEPTACLES (ITEMS 2 & 3).
14. PAVE-SEAL CAN BE A BI-DIRECTIONAL HERMETIC SEAL FOR VACUUM AND MOST PRESSURES. FOR PRESSURES ABOVE 150 PSI (10 BAR), CHECK WITH SALES ENGINEERING.

9	2	M85049/38-11N	*SEE NOTE 10	STRAIN RELIEF 38999 SHELL SIZE 11 NICKEL PLATED ALUMINUM
8	1	26FB5SN	*SEE NOTES 10 & 11	PLUG 5#20 SOCKET NICKEL PLATED ALUMINUM SHELL GOLD PLATED COPPER ALLOY CONTACTS
7	1	26FB5PN	*SEE NOTES 10 & 11	PLUG 5#20 NICKEL PLATED ALUMINUM SHELL GOLD PLATED COPPER ALLOY CONTACTS
6	1	0183		NUT VS15-SS
5	A/R	PAVE-Seal 150		EPOXY BLACK
4	1	-215 BUTYL		O-RING -215 BUTYL 70
3	1	20FB5PN	*SEE NOTES 11 & 12	RCPT 5#20 PIN NICKEL PLATED ALUMINUM SHELL GOLD PLATED COPPER ALLOY CONTACTS
2	1	20FB5SN	*SEE NOTES 11 & 12	RCPT 5#20 SOC NICKEL PLATED ALUMINUM SHELL GOLD PLATED COPPER ALLOY CONTACTS
1	1	0161		HOUSING VS15L-SS
ITEM	QTY	PART NUMBER		DESCRIPTION

**PAVE technology co.**

2751 Thunderhawk Court  
Dayton, OH 45414-3445  
U.S.A.  
tel (937) 890-1100  
fax (937) 8905165  
www.pavetechnologyco.com

DESCRIPTION: VS15L-SS-150-5-20-20FB5PSN\* \*SEE NOTES 10, 11, & 12

PART NUMBER: 4200\* \*SEE NOTES 10, 11, 12, & 13

MATERIAL: NOTED

REVISION LEVEL: D

PROJECTION:

ALL DIMENSIONS AND TOLERANCES APPLY TO FINISHED PART IN INCHES.  
ALLOWABLE TOLERANCES UNLESS SPECIFIED OTHERWISE: NONE ±0.5  
X.X DECIMAL ±0.1 X.XX DECIMAL ±0.02 X.XXX DECIMAL ±0.005  
ANGLES ±1 DEGREE SURFACE FINISH 128 microinch RMS