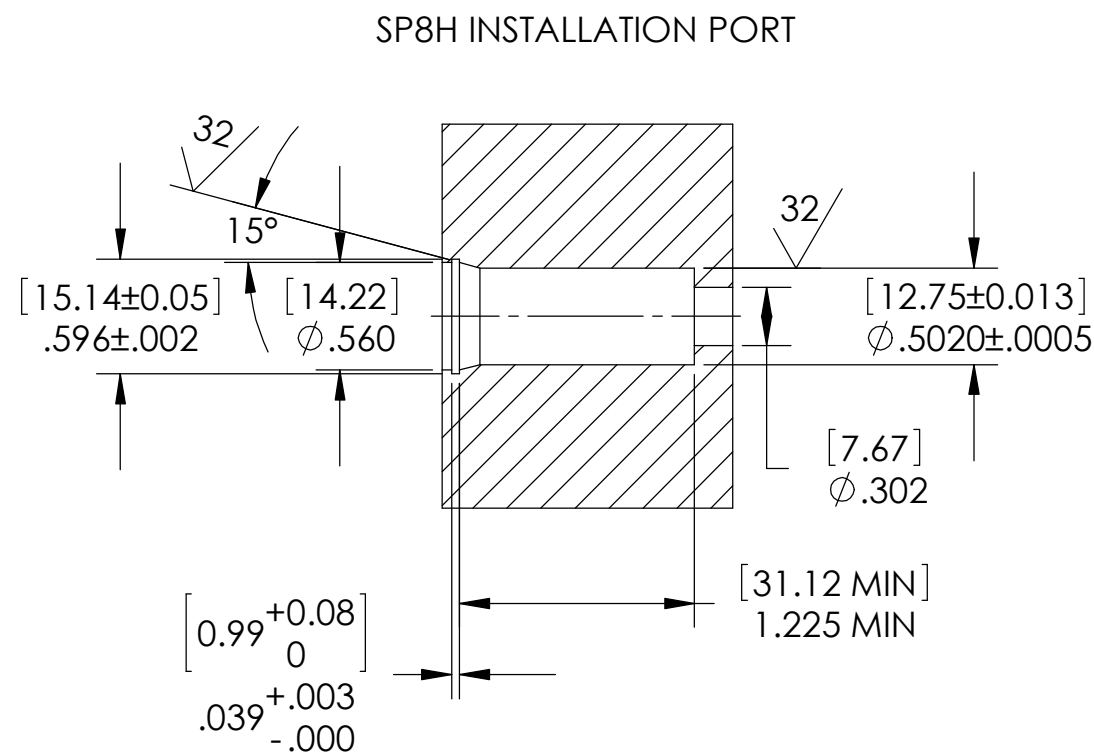
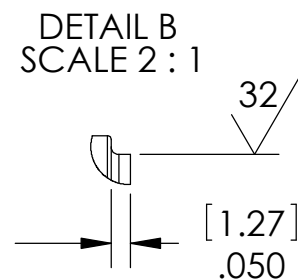
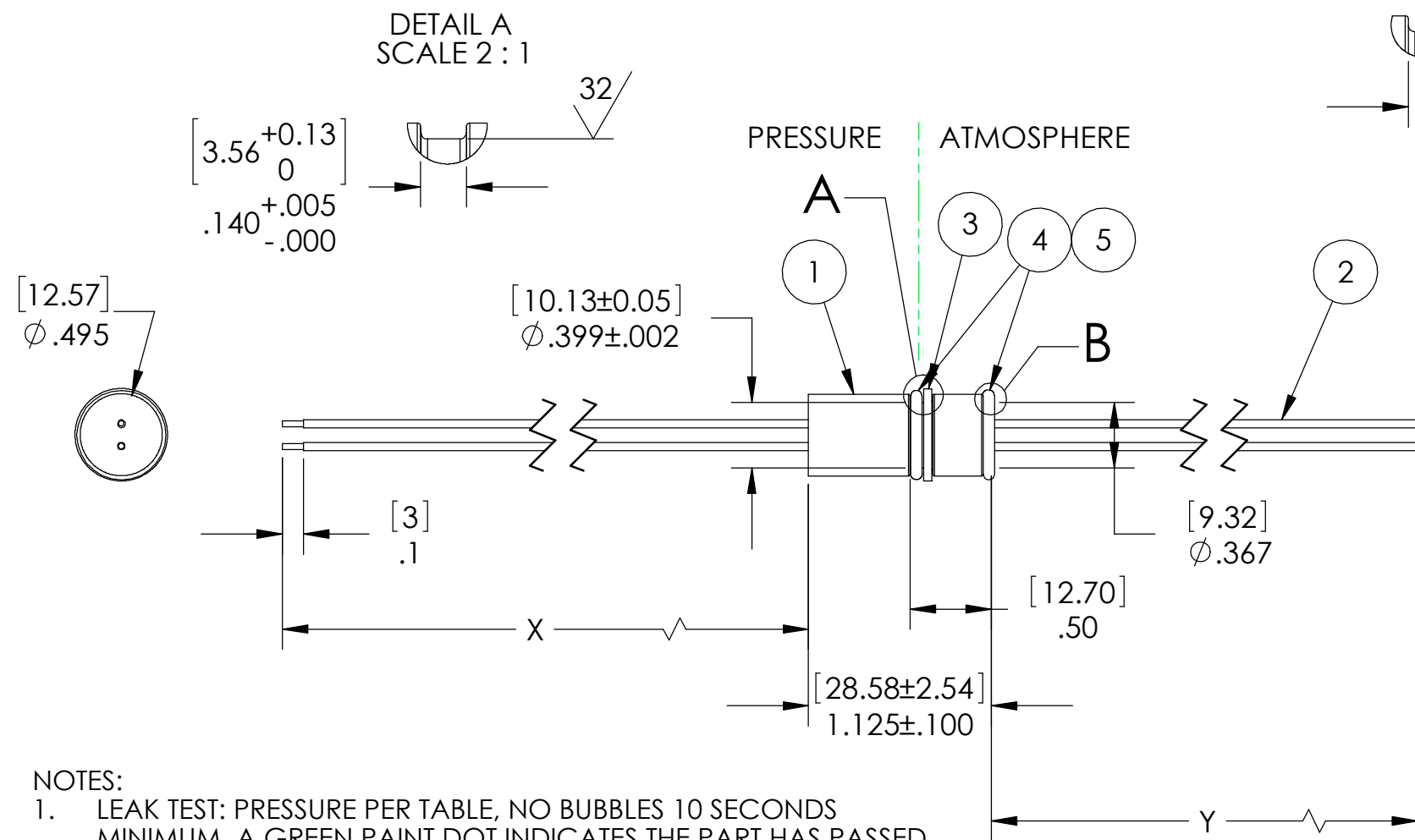


PAVE#	X	Y	PRESSURE	DESCRIPTION
4347	35.0±.5 [889.0±12.7]	6.0 MIN [152 MIN]	6,525 PSI	SP8H-E-200-2-K22-35-6
4347-1	12 MIN [304.8 MIN]	72 MIN [1828.8 MIN]	10,000 PSI	SP8H-E-200-2-K22-12-72



NOTES:

1. LEAK TEST: PRESSURE PER TABLE, NO BUBBLES 10 SECONDS MINIMUM. A GREEN PAINT DOT INDICATES THE PART HAS PASSED THE TEST.
2. HYPOT 630 VDC 500 MEGOHMS MINIMUM 0.01 SECOND MINIMUM WIRE TO WIRE.
3. ALL TESTS ARE PERFORMED AT ROOM TEMPERATURE.
4. ALL PARTS MUST PASS ALL TESTS.
5. WIRE POSITIONING IS APPROXIMATE & VARIABLE.
6. COSMETIC SURFACE VOIDS NOT ON O-RING SEALING SURFACES ARE ACCEPTABLE BASED ON THE SEAL'S DIAMETER:  
 <= .5 [12.7] SEAL DIAMETER:  $\phi$ .035 [.89] MAX ALLOWED VOID SIZE  
 > .5 [12.7] SEAL DIAMETER:  $\phi$ .060 [1.5] MAX ALLOWED VOID SIZE
7. WIRES TO EXIT WITHIN  $\phi$ .350 [8.89] ON PRESSURE SIDE AND WITHIN  $\phi$ .330 [8.38] ON THE ATMOSPHERE SIDE.
8. REF-OPERATING TEMPERATURE RANGE -20°C TO 125°C.
9. PAVE-SEAL CAN BE A BI-DIRECTIONAL HERMETIC SEAL FOR VACUUM AND MOST PRESSURES. FOR PRESSURES ABOVE 150 PSI (10 BAR), CHECK WITH SALES ENGINEERING.
10. DIMENSIONS ARE INCHES [millimeters].

5	A/R	PARKER O-LUBE	LUBRICANT O-RING BARIUM-BASED
4	2	-012 VITON	O-RING -012 VITON 75
3	1	-012 TEFLON	RING -012 TEFLON BACKUP SINGLE TURN SCARF CUT
2	2	KAPTON K22	WIRE 22 KAPTON M81381/12-22-N
1	A/R	PAVE-Seal 200	EPOXY BLACK
ITEM	QTY	PART #	DESCRIPTION

**PAVE technology co.**  
 2751 Thunderhawk Court  
 Dayton, OH 45414-3445  
 U.S.A.  
 tel (937) 890-1100  
 fax (937) 8905165  
 www.pavetechnologyco.com

DESCRIPTION  
SEE TABLE

PART NUMBER  
**4347**

MATERIAL NOTED  
REVISION LEVEL C

PROJECTION

ALL DIMENSIONS AND TOLERANCES APPLY TO FINISHED PART IN INCHES.  
 ALLOWABLE TOLERANCES UNLESS SPECIFIED OTHERWISE: NONE ±0.5  
 X.X DECIMAL ±0.1 X.XX DECIMAL ±0.02 X.XXX DECIMAL ±0.005  
 ANGLES ±1 DEGREE SURFACE FINISH 128 microinch RMS