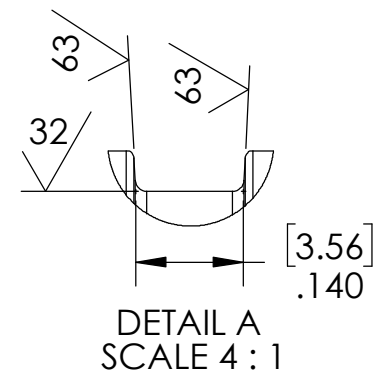


RECOMMENDED RETAINING RING
TRUARC N5000-43 OR EQUAL



NOTES:

1. FOR 4547 ONLY: LEAK TEST 6500 PSI, NO N2 BUBBLES 30 SECONDS MINIMUM. A GREEN PAINT DOT WHERE NOTED INDICATES THE PART HAS PASSED THE TEST.
2. FOR 4547-1 ONLY: HE LEAK TEST @ 1 ATM. 1X10⁻⁶ CC/SEC OR LESS. A GREEN PAINT DOT WHERE NOTED INDICATES THE PART HAS PASSED THE TEST.
3. OPTICAL CONTINUITY TEST WITH LASER, ALL 12 FIBERS MUST BE GOOD.
4. ALL TESTS ARE PERFORMED AT ROOM TEMPERATURE.
5. ALL PARTS MUST PASS ALL TESTS.
6. CABLE POSITIONING IS APPROXIMATE & VARIABLE, CABLE IS NOT REQUIRED TO BEND SHARPLY AT EPOXY SEAL SURFACE.
7. COSMETIC SURFACE VOIDS NOT ON O-RING SEALING SURFACES ARE ACCEPTABLE BASED ON THE SEAL'S DIAMETER:
 <= .5 [12.7] SEAL DIAMETER: ϕ .035 [.89] MAX ALLOWED VOID SIZE
 > .5 [12.7] SEAL DIAMETER: ϕ .060 [1.5] MAX ALLOWED VOID SIZE
8. REF-OPERATING TEMPERATURE RANGE -40 °C TO 85 °C.
9. PAVE-SEAL CAN BE A BI-DIRECTIONAL HERMETIC SEAL FOR VACUUM AND MOST PRESSURES. FOR PRESSURES ABOVE 150 PSI (10 BAR), CHECK WITH SALES ENGINEERING.
10. DIMENSIONS ARE INCHES [millimeters].

ITEM	QTY	PART NUMBER	DESCRIPTION
6	1	RR N5000-43-HST	RETAINING RING INTERNAL .437SS
5	A/R	FOMBLIN YVAC 3	LUBRICANT O-RING FOMBLIN GREASE
4	1	B/U RING -010	BACK UP RING -010 SINGLE TURN PER MS28774
3	1	-010 VITON LT	O-RING -010 VITON 75 LOW TEMP (GLT)
2	1	4510-BARE	FIBER RIBBON CABLE 12 FIBER <0.1dB INSERTION LOSS PER TURN AT 15mm BEND RADIUS MFD 9.8um±0.5u. SUMITOMO PURE ACCESS R15, CORNING CLEAR CURVE XB OR POFC BENDSAFE RIBBON FIBER
1	A/R	PAVE-Seal 150	EPOXY BLACK

PAVE technology co.
 2751 Thunderhawk Court
 Dayton, OH 45414-3445
 U.S.A.
 tel (937) 890-1100
 fax (937) 8905165
 www.pavetechnologyco.com

DESCRIPTION
SP6L-E-150-1-12SMFO-30-30

PART NUMBER
4547

MATERIAL NOTED

REVISION LEVEL
A

PROJECTION

ALL DIMENSIONS AND TOLERANCES APPLY TO FINISHED PART IN INCHES.
 ALLOWABLE TOLERANCES UNLESS SPECIFIED OTHERWISE: NONE ±0.5
 X.X DECIMAL ±0.1 X.XX DECIMAL ±0.02 X.XXX DECIMAL ±0.005
 ANGLES ±1 DEGREE SURFACE FINISH 128 microinch RMS