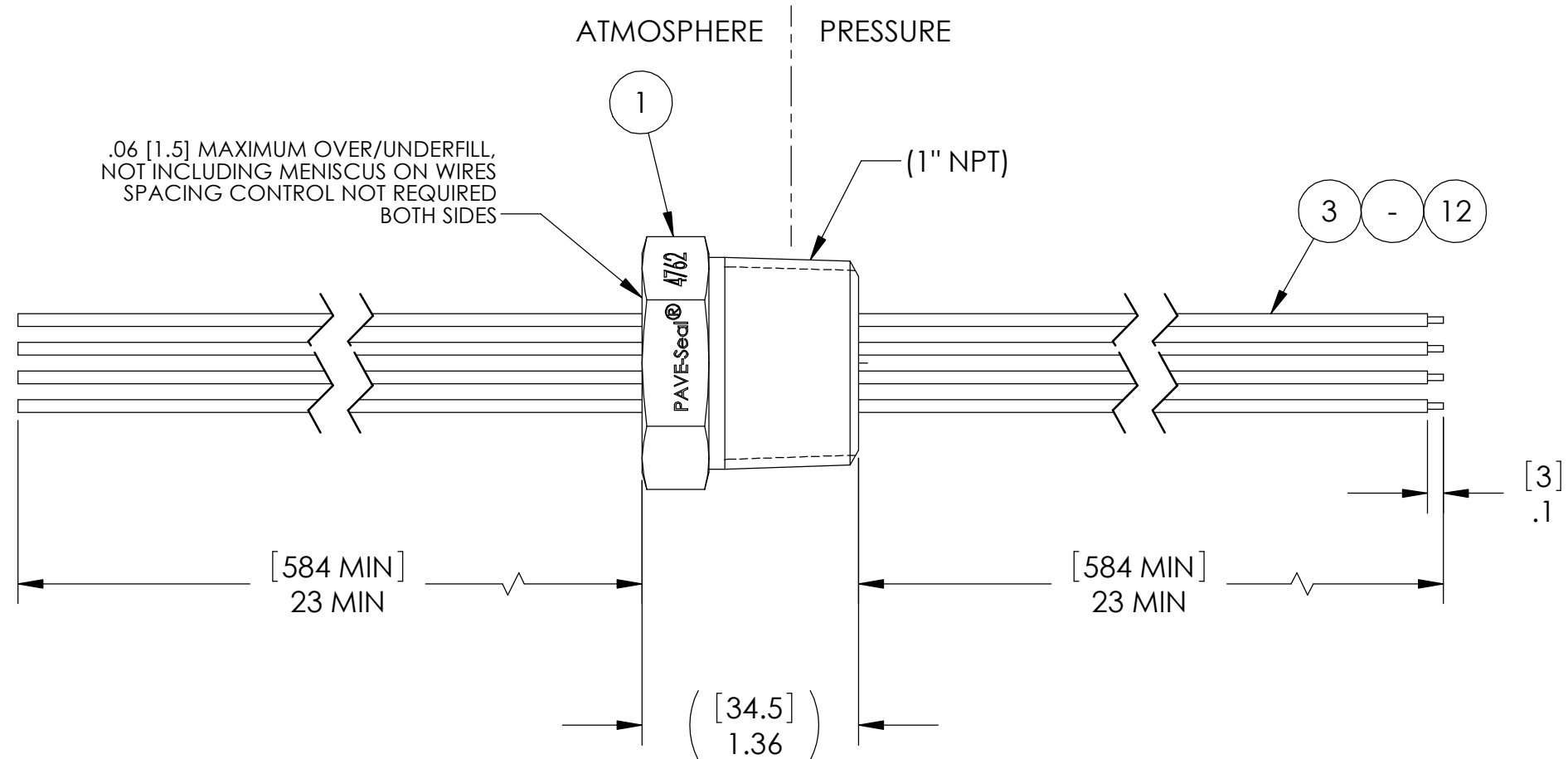
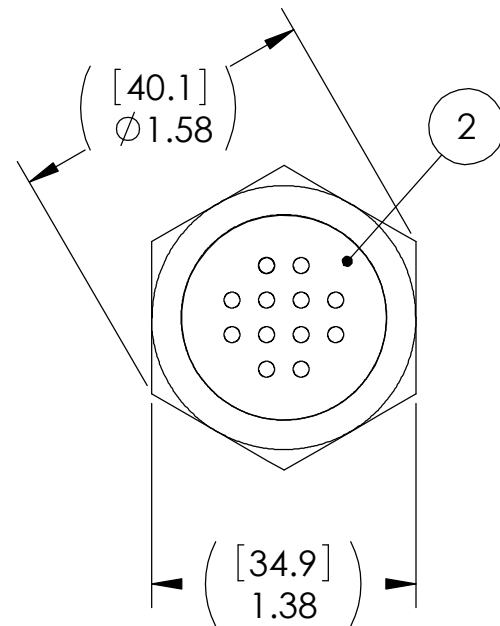



| PAVE# | TEST PRESSURE | TEMP. RANGE |
|--------|---------------|----------------|
| 4762 | 150 PSI | -20°C TO 125°C |
| 4762-1 | 1500 PSI | -20°C TO 125°C |
| 4762-2 | 450 PSI | -55°C TO 130°C |



NOTES:

- LEAK TEST: TEST PRESSURE PER TABLE, NO N2 BUBBLES 1 MINUTE MINIMUM. A GREEN PAINT DOT ON THE ATMOSPHERE SIDE INDICATES THE PART HAS PASSED THE TEST.
- HYPOT 630 VDC 500 MEGOHMS MINIMUM 0.01 SECOND MINIMUM WIRE TO WIRE AND HOUSING.
- ALL TESTS ARE PERFORMED AT ROOM TEMPERATURE.
- ALL PARTS MUST PASS ALL TESTS.
- WIRE POSITIONING IS APPROXIMATE & COLOR POSITIONS ARE VARIABLE.
- COSMETIC SURFACE VOIDS NOT ON O-RING SEALING SURFACES ARE ACCEPTABLE BASED ON THE SEAL'S DIAMETER:
 <= .5 [12.7] SEAL DIAMETER: Ø .035 [.89] MAX ALLOWED VOID SIZE
 > .5 [12.7] SEAL DIAMETER: Ø .060 [1.5] MAX ALLOWED VOID SIZE
- REF-OPERATING TEMPERATURE RANGE PER TABLE.
- DIMENSIONS ARE INCHES [millimeters].
- PAVE-SEAL CAN BE A BI-DIRECTIONAL HERMETIC SEAL FOR VACUUM AND MOST PRESSURES. FOR PRESSURES ABOVE 150 PSI (10 BAR), CHECK WITH SALES ENGINEERING.

| 12 | 1 | EE18 UL1180 GN/Y | WIRE 18EE UL1180 .014 7/#26 |
|------|-----|------------------|-----------------------------|
| 11 | 1 | EE18 UL1180 WHT | WIRE 18EE UL1180 .014 7/#26 |
| 10 | 1 | EE18 UL1180 VIO | WIRE 18EE UL1180 .014 7/#26 |
| 9 | 2 | EE18 UL1180 RED | WIRE 18EE UL1180 .014 7/#26 |
| 8 | 2 | EE18 UL1180 ORG | WIRE 18EE UL1180 .014 7/#26 |
| 7 | 1 | EE18 UL1180 GRY | WIRE 18EE UL1180 .014 7/#26 |
| 6 | 1 | EE18 UL1180 GRN | WIRE 18EE UL1180 .014 7/#26 |
| 5 | 1 | EE18 UL1180 BR | WIRE 18EE UL1180 .014 7/#26 |
| 4 | 1 | EE18 UL1180 BLU | WIRE 18EE UL1180 .014 7/#26 |
| 3 | 1 | EE18 UL1180 BLK | WIRE 18EE UL1180 .014 7/#26 |
| 2 | A/R | PAVE-Seal 150 | EPOXY BLACK |
| 1 | 1 | 4191 | HOUSING PT16-SS |
| ITEM | QTY | PART NUMBER | DESCRIPTION |


 2751 Thunderhawk Court
 Dayton, OH 45414-3445
 U.S.A.
 tel (937) 890-1100
 fax (937) 8905165
 www.pavetechnologyco.com

DESCRIPTION
 PT16-SS-150-12-TEE18-23-23

PART NUMBER *SEE TABLE MATERIAL NOTED
4762*

REVISION LEVEL C PROJECTION

ALL DIMENSIONS AND TOLERANCES APPLY TO FINISHED PART IN INCHES.
 ALLOWABLE TOLERANCES UNLESS SPECIFIED OTHERWISE: NONE ±0.5
 X.X DECIMAL ±0.1 X.XX DECIMAL ±0.02 X.XXX DECIMAL ±0.005
 ANGLES ±1 DEGREE SURFACE FINISH 128 microinch RMS