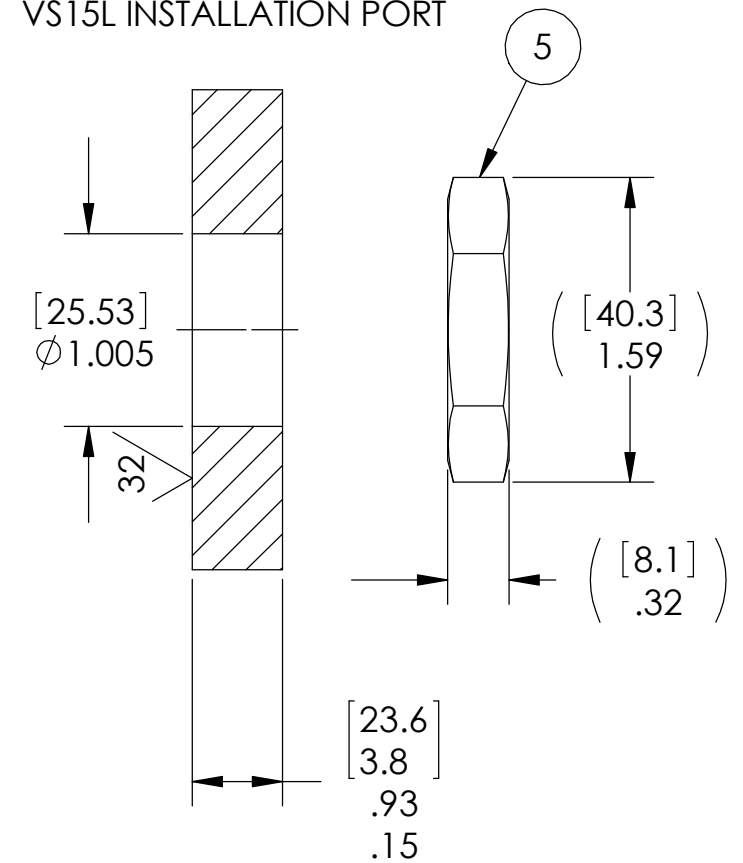


VS15L INSTALLATION PORT



PINOUT	
PRESSURE SIDE	ATM. SIDE
1	1
2	2
3	3
4	4
8	5
9	6
7	7
5	8
6	9
SHELL	SHELL

NOTES:

- LEAK TEST: 5114: HE LEAK TEST @ 1 ATM. 1×10^{-6} CC/SEC OR LESS. 5114-1: 1000 PSI, NO BUBBLES 30 SECONDS MIN. A GREEN PAINT DOT INDICATES THE PART HAS PASSED THE TEST.
- PART IS FUNCTIONALLY TESTED WITH MATING USB 3.0 CABLES AND A PC TO TRANSFER A FILE AT FASTER THAN 90 Mbps.
- ALL TESTS ARE PERFORMED AT ROOM TEMPERATURE.
- ALL PARTS MUST PASS ALL TESTS.
- COSMETIC SURFACE VOIDS NOT ON O-RING SEALING SURFACES ARE ACCEPTABLE BASED ON THE SEAL'S DIAMETER:
 $\leq .5$ [12.7] SEAL DIAMETER: $\phi .035$ [.89] MAX ALLOWED VOID SIZE
 $> .5$ [12.7] SEAL DIAMETER: $\phi .060$ [1.5] MAX ALLOWED VOID SIZE
- REF-OPERATING TEMPERATURE -20°C TO 85°C .
- DIMENSIONS ARE INCHES [millimeters].
- PAVE-SEAL CAN BE A BI-DIRECTIONAL HERMETIC SEAL FOR VACUUM AND MOST PRESSURES. FOR PRESSURES ABOVE 150 PSI (10 BAR), CHECK WITH SALES ENGINEERING.

ITEM	QTY	PART NUMBER	DESCRIPTION
6	2	GSB412137CHR	RCPT USB A-TYPE 3.1 AMPHENOL OR EQUAL
5	1	0183	NUT VS15-SS
4	1	-215 VITON	O-RING -215 VITON 75
3	A/R	FIT-221L 1/2"	TUBING SHRINK LSZH POLYOLEFIN BLACK
2	A/R	PAVE-Seal 150	EPOXY BLACK
1	1	0161	HOUSING VS15L-SS

PAVE technology co.
 2751 Thunderhawk Court
 Dayton, OH 45414-3445
 U.S.A.
 tel (937) 890-1100
 fax (937) 8905165
 www.pavetechnologyco.com

DESCRIPTION
 VS15L-SS-150-1-USBAfemale CROSSOVER USB3.1

PART NUMBER
5114

MATERIAL NOTED

REVISION LEVEL
 B

PROJECTION

ALL DIMENSIONS AND TOLERANCES APPLY TO FINISHED PART IN INCHES.
 ALLOWABLE TOLERANCES UNLESS SPECIFIED OTHERWISE: NONE ± 0.5
 X.X DECIMAL ± 0.1 X.XX DECIMAL ± 0.02 X.XXX DECIMAL ± 0.005
 ANGLES ± 1 DEGREE. SURFACE FINISH 128 microinch RMS