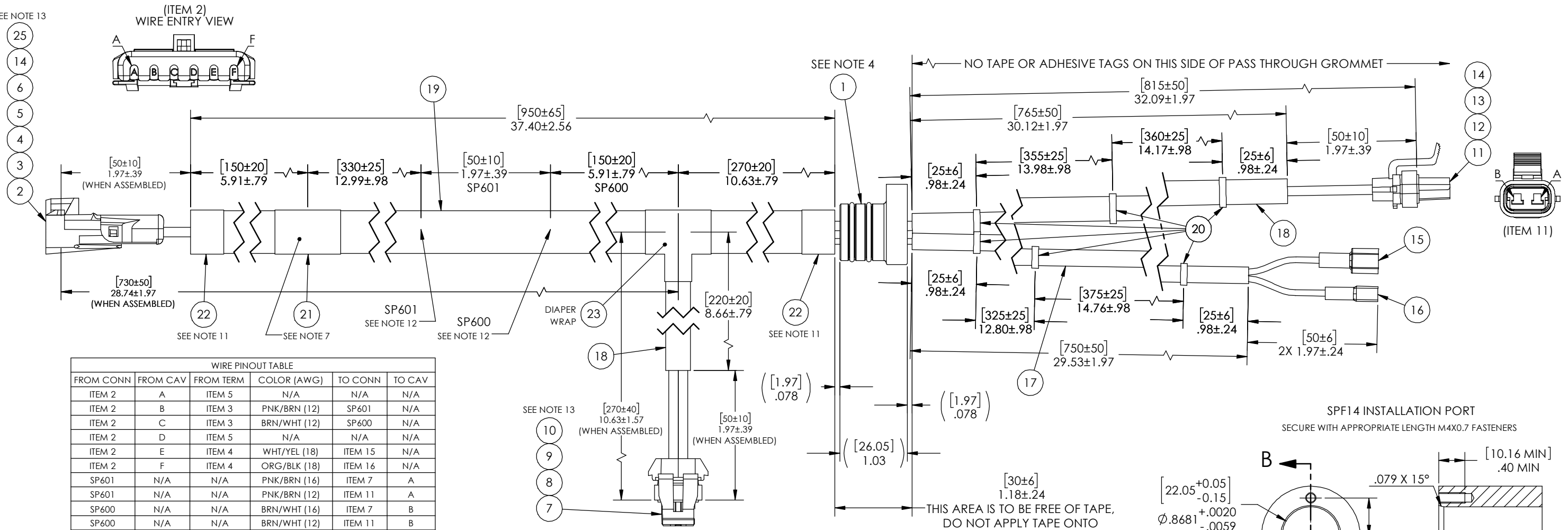


SEE NOTE 13

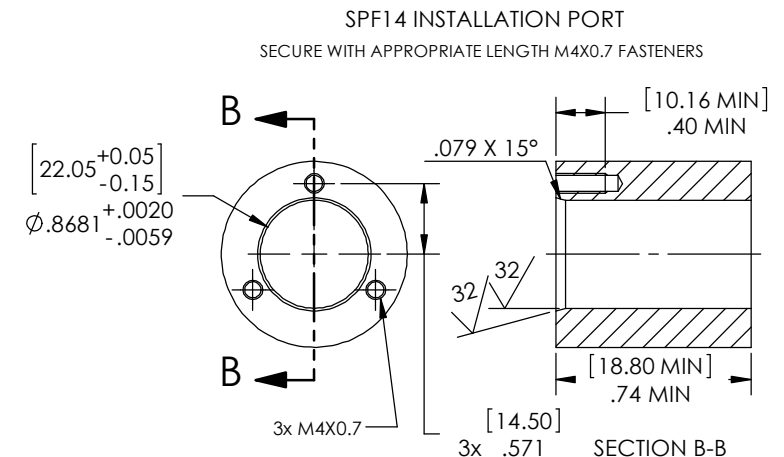


WIRE PINOUT TABLE					
FROM CONN	FROM CAV	FROM TERM	COLOR (AWG)	TO CONN	TO CAV
ITEM 2	A	ITEM 5	N/A	N/A	N/A
ITEM 2	B	ITEM 3	PNK/BRN (12)	SP601	N/A
ITEM 2	C	ITEM 3	BRN/WHT (12)	SP600	N/A
ITEM 2	D	ITEM 5	N/A	N/A	N/A
ITEM 2	E	ITEM 4	WHT/YEL (18)	ITEM 15	N/A
ITEM 2	F	ITEM 4	ORG/BLK (18)	ITEM 16	N/A
SP601	N/A	N/A	PNK/BRN (16)	ITEM 7	A
SP601	N/A	N/A	PNK/BRN (12)	ITEM 11	A
SP600	N/A	N/A	BRN/WHT (16)	ITEM 7	B
SP600	N/A	N/A	BRN/WHT (12)	ITEM 11	B

NOTES:

- HYPOT 630 VDC 500 MEGOHMS MINIMUM 0.01 SECOND MINIMUM WIRE TO WIRE WITH MATING CONNECTORS.
- ALL TESTS ARE PERFORMED AT ROOM TEMPERATURE.
- ALL PARTS MUST PASS ALL TESTS.
- REFERENCE PAVE DRAWING# 5155 FOR COMPLETE GROMMET ASSEMBLY DETAILS.
- THIS HARNESS IS FOR THE ENGINE COMPARTMENT AND VEHICLE EXTERIOR APPLICATIONS.
- PART IS TO BE FREE OF BURRS, FLASH AND SHARP EDGES THAT MAY AFFECT THE FUNCTION, SAFE HANDLING, INSTALLATION OR REMOVAL OF THE PART.
- PART IS TO BE LABELED WITH PART NUMBER, PART DESCRIPTION AND DATE OF MANUFACTURE.
- ASSEMBLY SHALL BE IN ACCORDANCE WITH SPECIFICATION ES-F65B-14A121-AA (REV J).
- ALL TAPE MUST COMPLY WITH ES-AC3T-AA (C10-00).
- ALL WIRING UNLESS OTHERWISE NOTED IS TO BE COVERED WITH CONVOLUTE.
- BACK TAPE AROUND WIRES WITHIN THE LOOM AND SECURE AROUND THE LOOM TO KEEP LOOM FROM SHIFTING.
- WIRE SPLICES ARE ULTRASONICALLY WELDED AND INDIVIDUALLY COVERED WITH ITEM 24.
- NOTED CONNECTORS AND CPA/TPA LOCKS ARE NOT TO BE SHIPPED ASSEMBLED TO HARNESS, INDIVIDUALLY BAG CONNECTORS WITH CPA/TPA LOCKS AND SHIP LOOSE WITH HARNESS. ITEM 2 SHALL HAVE THE CAVITY PLUGS (ITEM 5) INSTALLED PER PIN-OUT TABLE.
- ALL CONNECTOR END VIEWS ARE SHOWN AS VIEWED FROM THE MATING SURFACE UNLESS OTHERWISE SPECIFIED.
- ALL CIRCUITS MUST HAVE CONTINUITY.
- SHORT CIRCUITS ARE NOT PERMISSIBLE.
- OPEN CIRCUITS ARE NOT PERMISSIBLE.
- CROSSED WIRES ARE NOT PERMISSIBLE.
- REF-OPERATING TEMPERATURE RANGE -40 °C TO 125 °C.
- DIMENSIONS ARE INCHES [millimeters].
- REF-5155 LEAK TEST: 315 PSI, NO BUBBLES 1.5 MINUTES MINIMUM. NO SCREWS USED DURING PRODUCTION LEAK TESTING, A GREEN PAINT DOT INDICATES THE PART HAS PASSED THE TEST.
- COSMETIC SURFACE VOIDS NOT ON O-RING SEALING SURFACES ARE ACCEPTABLE BASED ON THE SEAL'S DIAMETER:
 <= .5 [12.7] SEAL DIAMETER: Ø.035 [.89] MAX ALLOWED VOID SIZE
 > .5 [12.7] SEAL DIAMETER: Ø0.060 [1.5] MAX ALLOWED VOID SIZE

ITEM	QTY	PART NUMBER	DESCRIPTION
25	2	15324982	1 WAY CABLE SEAL METRI PACK INDIVIDUAL ROUND GREEN SILICONE OD 7.25mm CABLE DIAMETER RANGE 2.03-2.85mm
24	A/R	1/4.AD.BLK.3:1S	HEAT SHRINK 1/4" DUAL WALL ADHESIVE BACKED 3:1 RATIO BLACK
23	A/R	COROPLAST 837X	HARNESS TAPE HIGH TEMPERATURE FR BLACK PET ACRYLIC COROPLAST 837X
22	A/R	POLYKEN 277	HARNESS TAPE HIGH TEMPERATURE FR BLACK POLYKEN 277
21	1	THT-10-427-3	LABEL SELF-LAMINATING WHITE VINYL 1 INCH LONG
20	6	111-01936	CABLE TIE WHITE PA66 100mmX2.45mm 18lb TENSILE STRENGTH
19	1	LOOM 1/2 INCH	LOOM 1/2 INCH SPLIT NYLON BLACK
18	2	LOOM 3/8 INCH	LOOM 3/8 INCH SPLIT NYLON BLACK
17	1	LOOM 1/4 INCH	LOOM 1/4 INCH SPLIT NYLON BLACK
16	1	190020013	INSULATED FEMALE QUICK DISCONNECT AVIKRIMP 18-22 AWG
15	1	190010003	TAB MALE QUICK DISCONNECT AVIKRIMP 18-22 AWG
14	4	15324981	1 WAY CABLE SEAL METRI PACK INDIVIDUAL ROUND BLUE SILICONE OD 7.25mm CABLE DIAMETER RANGE 3.45-4.30mm
13	1	15332188	SECONDARY TPA LOCK BLUE METRI PACK
12	2	12129493	TANG TERMINAL FEMALE SEALED METRI PACK 280 SERIES TIN PLATED COPPER ALLOY CONDUCTOR RANGE 2.00-3.00mm2 CABLE DIAMETER RANGE 2.45-3.80mm
11	1	15332187	CONNECTOR ASSEMBLY DELPHI 2 WAY MEDIUM GRAY METRI PACK 280 SEALED FEMALE MAX CURRENT 30 AMPS
10	1	12052634	SEE NOTE 13 SECONDARY TPA TAXI LOCK BLUE METRI PACK
9	2	15324973	1 WAY CABLE SEAL METRI PACK INDIVIDUAL ROUND DARK RED SILICONE OD 5.75mm CABLE DIAMETER RANGE 2.03-2.85mm
8	2	12048074	TANG TERMINAL FEMALE SEALED METRI PACK 150 SERIES TIN PLATED COPPER ALLOY CABLE RANGE 0.50-1.00mm2
7	1	12052641	SEE NOTE 13 CONNECTOR ASSEMBLY 2 WAY BLACK METRI PACK 150 SEALED FEMALE MAX CURRENT 14 AMPS
6	1	12020833	SEE NOTE 13 SECONDARY CPA LOCK GRAY METRI PACK
5	2	12010300	SEE NOTE 13 1 WAY PLUG CAVITY SEAL INDIVIDUAL ROUND GREEN OD 7.25mm
4	2	12089040	TANG TERMINAL MALE SEALED WEATHER PACK TIN PLATED COPPER ALLOY CABLE RANGE 0.50-0.80mm2
3	2	12124587	TANG TERMINAL MALE SEALED WEATHER PACK TIN PLATED COPPER ALLOY CABLE RANGE 2.50-3.00mm2
2	1	12020786	SEE NOTE 13 CONNECTOR ASSEMBLY 6 WAY WEATHER PACK SHROUD SEALED MALE MAX CURRENT 20 AMPS
1	1	5155	SPF14-E-150-2/2-GXL12/18-33-40



FINISH
 ALL DIMENSIONS AND TOLERANCES APPLY TO FINISHED PART IN INCHES.
 ALLOWABLE TOLERANCES UNLESS SPECIFIED OTHERWISE: NONE ±0.5
 X.X DECIMAL ±0.1 X.XX DECIMAL ±0.02 X.XXX DECIMAL ±0.005
 ANGLES ±1 DEGREE SURFACE FINISH 128 microinch RMS

PAVE technology co.
 2751 Thunderhawk Court
 Dayton, OH 45414-3445
 U.S.A.
 tel (937) 890-1100
 fax (937) 8905165
 www.pavetechnologyco.com

DESCRIPTION: PAVE-Seal® Cable Harnesses
 SPF14-E-150-2/2-GXL12/18-32T-39T

MATERIAL: NOTED

PART NUMBER: 5155

REVISION LEVEL: A

PROJECTION: