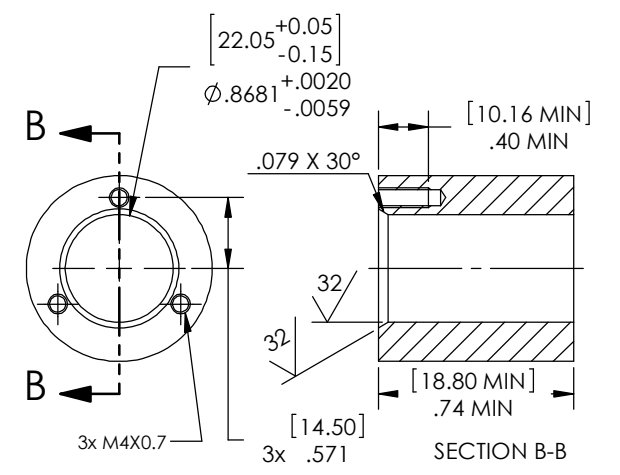


WIRE PINOUT TABLE				
ITEM #	CAVITY	WIRE COLOR	ITEM #	CAVITY
2 (TANK 4)	A	BLUE	4 (PUMP 4)	A
2 (TANK 4)	B	BLACK	4 (PUMP 4)	B

- NOTES:
- HYPOT 630 VDC 500 MEGOHMS MINIMUM 0.01 SECOND MINIMUM WIRE TO WIRE WITH MATING CONNECTORS.
  - ALL TESTS ARE PERFORMED AT ROOM TEMPERATURE.
  - ALL PARTS MUST PASS ALL TESTS.
  - REFERENCE PAVE DRAWING# 5177 FOR COMPLETE GROMMET ASSEMBLY DETAILS.
  - THIS HARNESS IS FOR THE ENGINE COMPARTMENT AND VEHICLE EXTERIOR APPLICATIONS.
  - PART IS TO BE FREE OF BURRS, FLASH AND SHARP EDGES THAT MAY AFFECT THE FUNCTION, SAFE HANDLING, INSTALLATION OR REMOVAL OF THE PART.
  - PART IS TO BE LABELED WITH PART NUMBER, PART DESCRIPTION AND DATE OF MANUFACTURE.
  - ASSEMBLY SHALL BE IN ACCORDANCE WITH SPECIFICATION ES-F65B-14A121-AA (REV J).
  - ALL TAPE MUST COMPLY WITH ES-AC3T-AA (C10-00).
  - ALL WIRING UNLESS OTHERWISE NOTED IS TO BE COVERED WITH CONVOLUTE.
  - BACK TAPE AROUND WIRES WITHIN THE LOOM AND SECURE AROUND THE LOOM TO KEEP LOOM FROM SHIFTING.
  - ALL CONNECTOR END VIEWS ARE SHOWN AS VIEWED FROM THE MATING SURFACE.
  - CIRCUIT PAIRS MUST BE TWISTED TOGETHER AT A PITCH RATE OF .59" [15mm] ± 20% (ONE TWIST = 180°). THE PITCH RATE MUST BE MAINTAINED TO WITHIN 1.97" [50mm] OF ANY CONNECTOR.
  - ALL CIRCUITS MUST HAVE CONTINUITY.
  - SHORT CIRCUITS ARE NOT PERMISSIBLE.
  - OPEN CIRCUITS ARE NOT PERMISSIBLE.
  - CROSSED WIRES ARE NOT PERMISSIBLE.
  - REF-OPERATING TEMPERATURE RANGE -40 °C TO 125 °C.
  - DIMENSIONS ARE INCHES [millimeters].
  - REF-5177 LEAK TEST: 315 PSI, NO BUBBLES 1.5 MINUTES MINIMUM. NO SCREWS USED DURING PRODUCTION LEAK TESTING, A GREEN PAINT DOT INDICATES THE PART HAS PASSED THE TEST.
  - COSMETIC SURFACE VOIDS NOT ON O-RING SEALING SURFACES ARE ACCEPTABLE BASED ON THE SEAL'S DIAMETER:  
 <= .5 [12.7] SEAL DIAMETER: Ø.035 [.89] MAX ALLOWED VOID SIZE  
 > .5 [12.7] SEAL DIAMETER: Ø0.060 [1.5] MAX ALLOWED VOID SIZE

SPF14 INSTALLATION PORT



SECURE WITH APPROPRIATE LENGTH M4X0.7 FASTENERS

ITEM	QTY	PART NUMBER	DESCRIPTION
11	A/R	POLYKEN 277	HARNESS TAPE HIGH TEMPERATURE FR BLACK POLYKEN 277
10	1	THT-10-427-3	LABEL SELF-LAMINATING WHITE VINYL 1 INCH LONG
9	3	T18ROM4	CABLE TIE BLACK NYLON PA66 100mmX2.45mm 18lb TENSILE STRENGTH
8	2	LOOM 3/8 INCH	LOOM 3/8 INCH SPLIT NYLON BLACK
7	4	15324981	1 WAY CABLE SEAL METRI PACK INDIVIDUAL ROUND BLUE SILICONE OD 7.25mm CABLE DIAMETER RANGE 3.45-4.30mm
6	1	15332188	SECONDARY TPA LOCK BLUE METRI PACK
5	2	12129493	TANG TERMINAL FEMALE SEALED METRI PACK 280 SERIES TIN PLATED COPPER ALLOY CONDUCTOR RANGE 2.00-3.00mm2 CABLE DIAMETER RANGE 2.45-3.80mm
4	1	15332187	CONNECTOR ASSEMBLY DELPHI 2 WAY MEDIUM GRAY METRI PACK 280 SEALED FEMALE MAX CURRENT 30 AMPS
3	2	12124581	TANG TERMINAL FEMALE SEALED WEATHER PACK TIN PLATED COPPER ALLOY CONDUCTOR RANGE 2.50-3.00mm2 CABLE DIAMETER RANGE 3.96-3.96mm
2	1	12103784	CONNECTOR ASSEMBLY DELPHI 2 WAY LIGHT GRAY WEATHER PACK TOWER SEALED FEMALE MAX CURRENT 20 AMPS
1	1	5177	SPF14-E-150-4-GXL12-39-16

2751 Thunderhawk Court  
 Dayton, OH 45414-3445  
 U.S.A.  
 tel (937) 890-1100  
 fax (937) 8905165  
 www.pavetechnologyco.com

DESCRIPTION PAVE-Seal® Cable Harnesses  
**SPF14-E-150-4-GXL12-33T-13T**  
 MATERIAL NOTED  
 PART NUMBER **5178**  
 REVISION LEVEL -  
 PROJECTION

FINISH ALL DIMENSIONS AND TOLERANCES APPLY TO FINISHED PART IN INCHES.  
 ALLOWABLE TOLERANCES UNLESS SPECIFIED OTHERWISE: NONE ±0.5  
 XX DECIMAL ±0.1 X.XX DECIMAL ±0.02 X.XXX DECIMAL ±0.005  
 ANGLES ±1 DEGREE SURFACE FINISH 128 microinch RMS