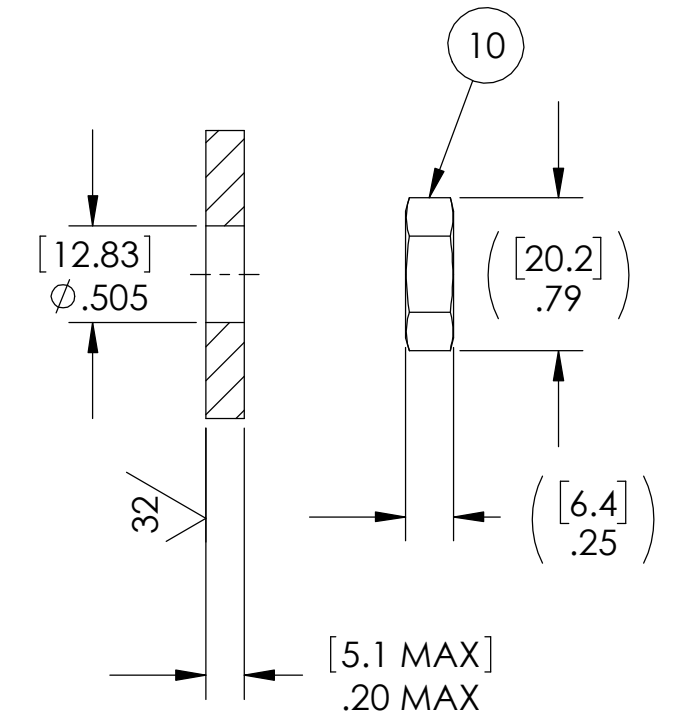


VS8 INSTALLATION PORT



NOTES:

1. LEAK TESTING, A GREEN PAINT DOT ON THE ATMOSPHERE SIDE INDICATES THE PART HAS PASSED THE TEST:
5206 ONLY: LEAK TEST 80 PSI, NO BUBBLES 30 SECONDS MINIMUM.
5206-NW25 ONLY: HE LEAK TEST @ 1 ATM. 1×10^{-6} CC/SEC OR LESS.
ALCOHOL OR FOMBLIN YVAC 3 MAY BE USED TO LUBRICATE O-RINGS FOR VACUUM HELIUM LEAK TESTING.
2. HYPOT 630 VDC 500 MEGOHMS MINIMUM 0.01 SECOND MINIMUM WIRE TO WIRE AND HOUSING.
3. ALL TESTS ARE PERFORMED AT ROOM TEMPERATURE.
4. ALL PARTS MUST PASS ALL TESTS.
5. WIRE POSITIONING IS APPROXIMATE & VARIABLE.
6. COSMETIC SURFACE VOIDS NOT ON O-RING SEALING SURFACES ARE ACCEPTABLE BASED ON THE SEAL'S DIAMETER:
<= .5 [12.7] SEAL DIAMETER: ϕ .035 [.89] MAX ALLOWED VOID SIZE
> .5 [12.7] SEAL DIAMETER: ϕ .060 [1.5] MAX ALLOWED VOID SIZE
7. REF-OPERATING TEMPERATURE RANGE -20 °C TO 125 °C.
8. DIMENSIONS ARE INCHES [millimeters].
9. 5206-NW25 ONLY SHIPS INSTALLED AND LEAK TESTED, PER NOTE 1, IN ITEM 11 (NW25 ADAPTER).
10. PAVE-SEAL CAN BE A BI-DIRECTIONAL HERMETIC SEAL FOR VACUUM AND MOST PRESSURES. FOR PRESSURES ABOVE 150 PSI (10 BAR), CHECK WITH SALES ENGINEERING.

11	1	5210	HOUSING NW25-SS VS8 ADAPTER
10	1	0894	NUT VS8-SS
9	1	-112 VITON	O-RING -112 VITON 75
8	1	TZ28 WHITE /32	WIRE 28 TEFZEL M22759/32 7/#36
7	1	TZ28 RED /32	WIRE 28 TEFZEL M22759/32 7/#36
6	1	TZ28 ORANGE /32	WIRE 28 TEFZEL M22759/32 7/#36
5	1	TZ28 GREEN /32	WIRE 28 TEFZEL M22759/32 7/#36
4	1	TZ28 BLUE /32	WIRE 28 TEFZEL M22759/32 7/#36
3	1	TZ28 BLACK /32	WIRE 28 TEFZEL M22759/32 7/#36
2	A/R	PAVE-Seal 150	EPOXY BLACK
1	1	5208	HOUSING VS8-SS
ITEM	QTY	PART NUMBER	DESCRIPTION

PAVE technology co.

2751 Thunderhawk Court
Dayton, OH 45414-3445
U.S.A.
tel (937) 890-1100
fax (937) 8905165
www.pavetechnologyco.com

DESCRIPTION
VS8-SS-150-6-TZ28-18-18

PART NUMBER *SEE NOTES 1 & 9
5206*

MATERIAL NOTED

REVISION LEVEL -

PROJECTION

ALL DIMENSIONS AND TOLERANCES APPLY TO FINISHED PART IN INCHES.
ALLOWABLE TOLERANCES UNLESS SPECIFIED OTHERWISE: NONE ± 0.5
X.X DECIMAL ± 0.1 X.XX DECIMAL ± 0.02 X.XXX DECIMAL ± 0.005
ANGLES ± 1 DEGREE. SURFACE FINISH 128 microinch RMS