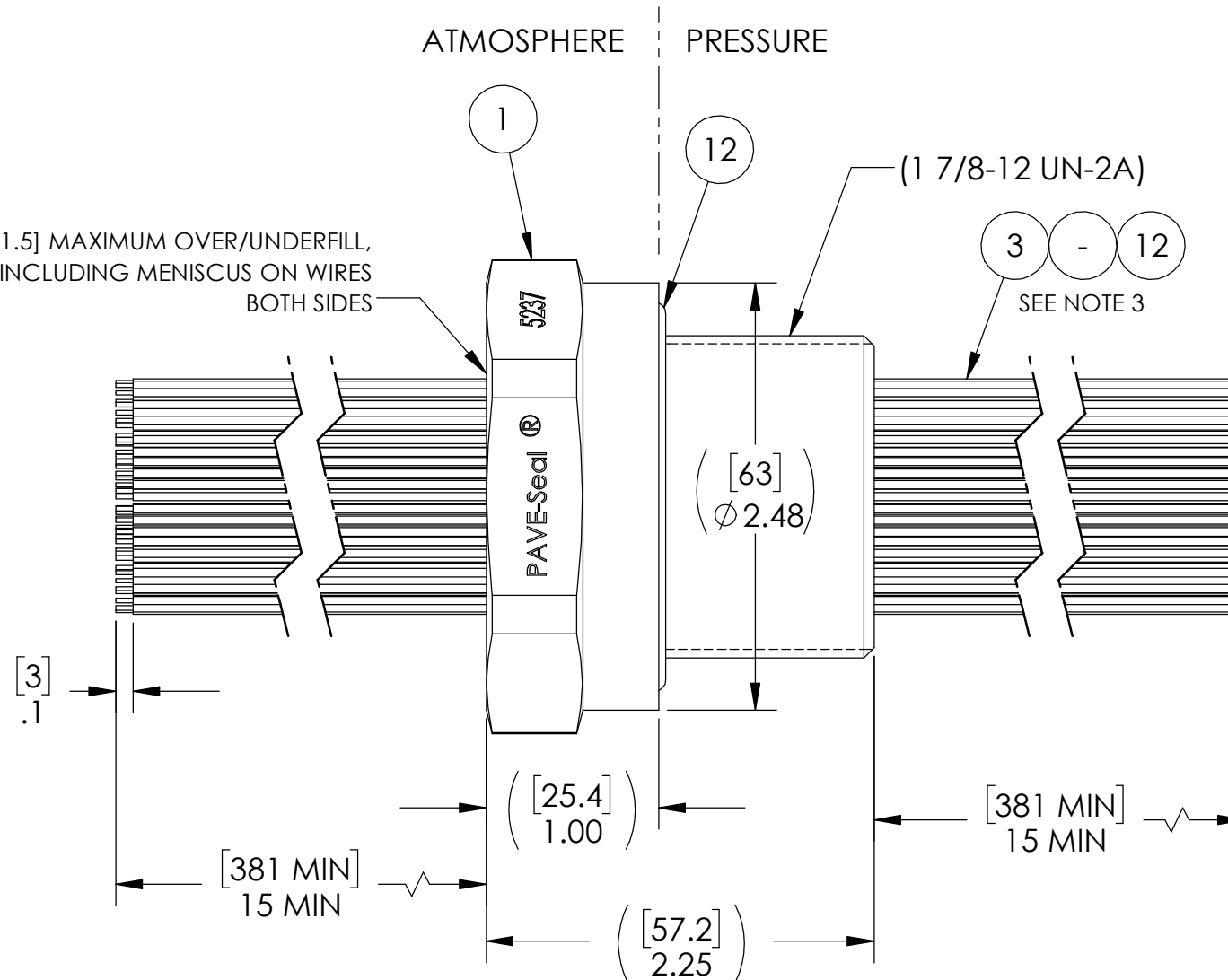
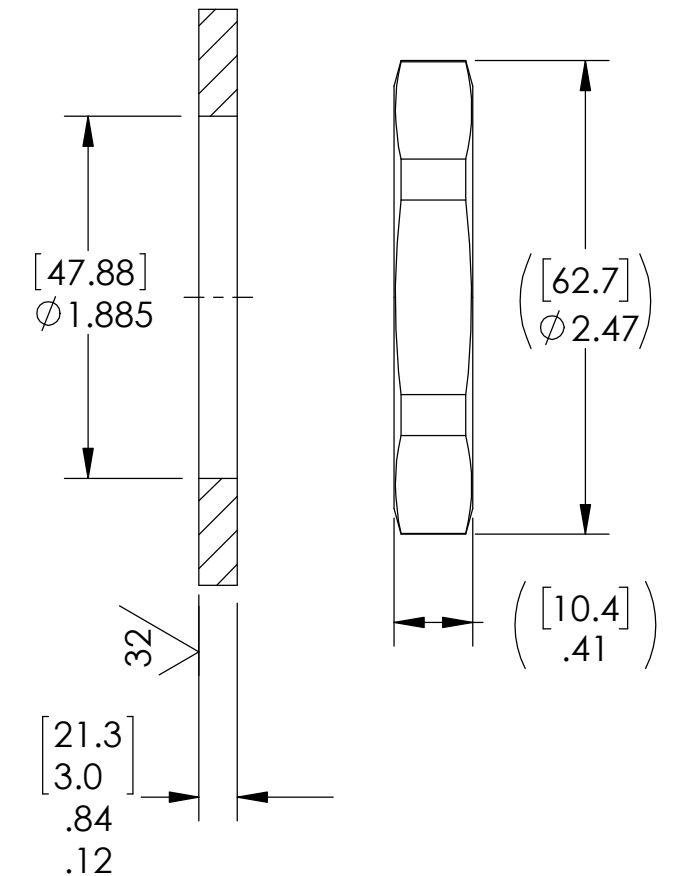


.06 [1.5] MAXIMUM OVER/UNDERFILL,
NOT INCLUDING MENISCUS ON WIRES
BOTH SIDES



VS26 INSTALLATION PORT



NOTES:

1. LEAK TEST: 200 PSI, NO BUBBLES 30 SECONDS MINIMUM. A GREEN PAINT DOT ON THE ATMOSPHERE SIDE INDICATES THE PART HAS PASSED THE TEST.
2. HYPOT 630 VDC 500 MEGOHMS MINIMUM 0.01 SECOND MINIMUM WIRE TO WIRE AND HOUSING.
3. ASSEMBLY MAY HAVE UP TO 14 SPARE WIRES, MINIMUM 94 WIRES OF ANY LISTED COLOR REQUIRED.
4. ALL TESTS ARE PERFORMED AT ROOM TEMPERATURE.
5. ALL PARTS MUST PASS ALL TESTS.
6. WIRE POSITIONING IS APPROXIMATE & COLOR POSITIONS ARE VARIABLE.
7. COSMETIC SURFACE VOIDS NOT ON O-RING SEALING SURFACES ARE ACCEPTABLE BASED ON THE SEAL'S DIAMETER:
 <= .5 [12.7] SEAL DIAMETER: ϕ .035 [.89] MAX ALLOWED VOID SIZE
 > .5 [12.7] SEAL DIAMETER: ϕ .060 [1.5] MAX ALLOWED VOID SIZE
8. REF-OPERATING TEMPERATURE RANGE -20 °C TO 125 °C.
9. DIMENSIONS ARE INCHES [millimeters].
10. PAVE-SEAL CAN BE A BI-DIRECTIONAL HERMETIC SEAL FOR VACUUM AND MOST PRESSURES. FOR PRESSURES ABOVE 150 PSI (10 BAR), CHECK WITH SALES ENGINEERING.

13	1	0185	NUT VS26-SS
12	1	-226 VITON	O-RING -226 VITON 75
11	12	E22 YELLOW	WIRE 22E MIL-W-16878/4 .010 7/#30
10	12	E22 WHT	WIRE 22E MIL-W-16878/4 .010 7/#30
9	12	E22 RED	WIRE 22E MIL-W-16878/4 .010 7/#30
8	12	E22 ORANGE	WIRE 22E MIL-W-16878/4 .010 7/#30
7	12	E22 GREEN	WIRE 22E MIL-W-16878/4 .010 7/#30
6	12	E22 GRAY	WIRE 22E MIL-W-16878/4 .010 7/#30
5	12	E22 BROWN	WIRE 22E MIL-W-16878/4 .010 7/#30
4	12	E22 BLUE 7 STR	WIRE 22E MIL-W-16878/4 .010 7/#30
3	12	E22 BLK	WIRE 22E MIL-W-16878/4 .010 7/#30
2	A/R	PAVE-Seal 150	EPOXY BLACK
1	1	1531	HOUSING VS26-SS
ITEM	QTY	PART NUMBER	DESCRIPTION

PAVE technology co.
 2751 Thunderhawk Court
 Dayton, OH 45414-3445
 U.S.A.
 tel (937) 890-1100
 fax (937) 8905165
 www.pavetechnologyco.com

DESCRIPTION
 VS26-SS-150-94-TE22-15-15

PART NUMBER
5237

MATERIAL NOTED

REVISION LEVEL -

PROJECTION

ALL DIMENSIONS AND TOLERANCES APPLY TO FINISHED PART IN INCHES.
 ALLOWABLE TOLERANCES UNLESS SPECIFIED OTHERWISE: NONE ±0.5
 X.X DECIMAL ±0.1 X.XX DECIMAL ±0.02 X.XXX DECIMAL ±0.005
 ANGLES ±1 DEGREE SURFACE FINISH 128 microinch RMS