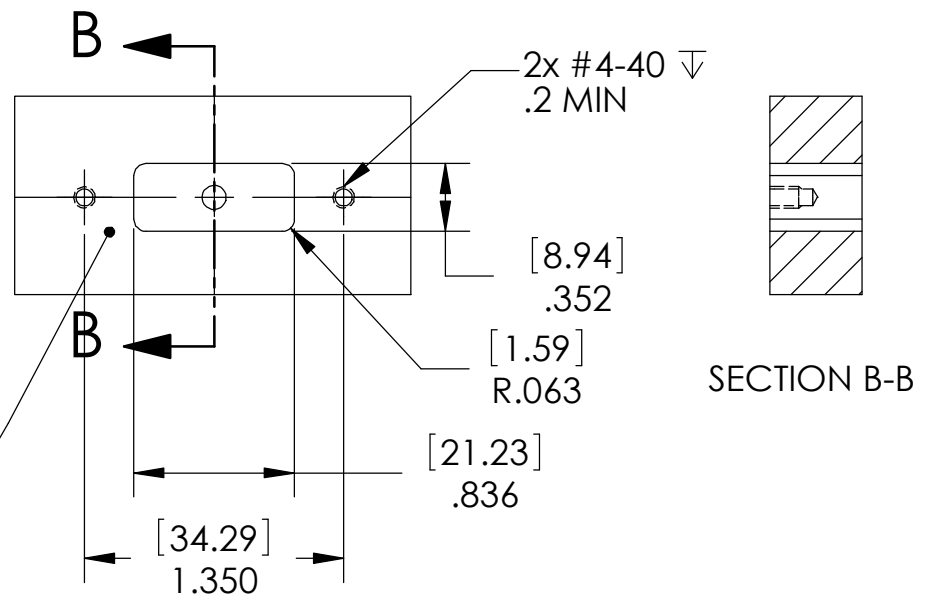
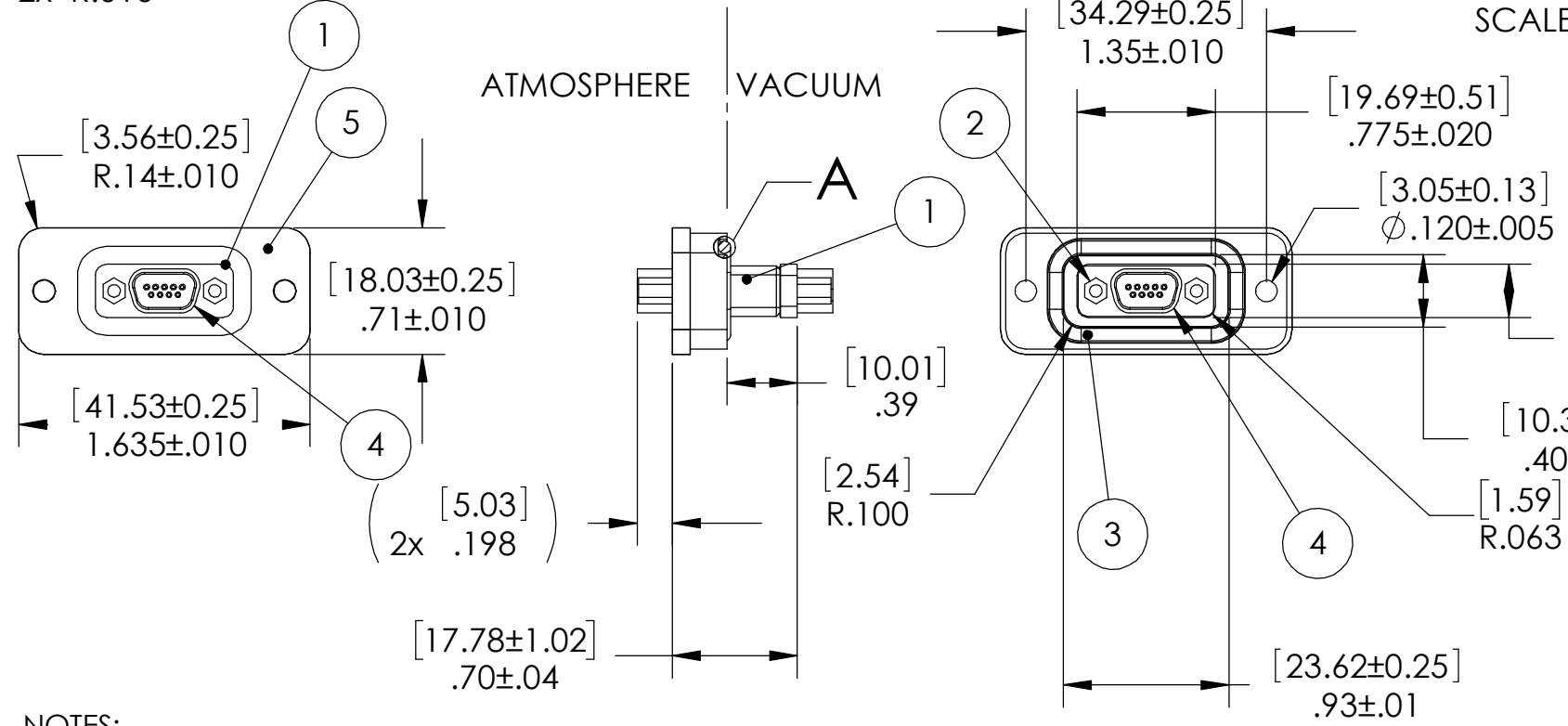


SCALE 2:1

SP26/11 INSTALLATION PORT



SECTION B-B

ATM	VAC
1	5
2	4
3	3
4	2
5	1
6	9
7	8
8	7
9	6

PIN-OUT

NOTES:

1. HE LEAK TEST VACUUM 1×10^{-8} CC/SEC OR LESS.
2. HYPOT 500 VDC 200 MEGOHMS MINIMUM 0.01 SECOND MINIMUM WIRE TO WIRE AND HOUSING.
3. CONTINUITY TEST 0.5 OHMS MAXIMUM MATING CONNECTOR TO MATING CONNECTOR.
4. ALL TESTS ARE PERFORMED AT ROOM TEMPERATURE.
5. ALL PARTS MUST PASS ALL TESTS.
6. COSMETIC SURFACE VOIDS NOT ON O-RING SEALING SURFACES ARE ACCEPTABLE BASED ON THE SEAL'S DIAMETER:
 $\leq .5$ [12.7] SEAL DIAMETER: $\phi .035$ [.89] MAX ALLOWED VOID SIZE
 $> .5$ [12.7] SEAL DIAMETER: $\phi .060$ [1.5] MAX ALLOWED VOID SIZE
7. REF-OPERATING TEMPERATURE -20°C TO 125°C .
8. DIMENSIONS ARE INCHES [MILLIMETERS].
9. PAVE-MATE CAN BE A BI-DIRECTIONAL HERMETIC SEAL FOR VACUUM AND MOST PRESSURES. FOR PRESSURES ABOVE 150 PSI (10 BAR), CHECK WITH SALES ENGINEERING.

ITEM	QTY	PART NUMBER	DESCRIPTION
5	1	3515	PLATE TOP SS MICRO D 9 PIN
4	2	M83513/02-AN	CONNECTOR 9 SOC 83513 MICRO D
3	1	-019 VITON	O-RING -019 VITON 75
2	4	JACKPOST	"P" STYLE 2-56 UNC
1	A/R	PAVE-Seal 150	EPOXY BLACK

PAVE technology co.
 2751 Thunderhawk Court
 Dayton, OH 45414-3445
 U.S.A.
 tel (937) 890-1100
 fax (937) 8905165
 www.pavetechnologyco.com

DESCRIPTION
 SP26/11-SS-150-9-26-M83513SS

PART NUMBER
5289

MATERIAL NOTED

REVISION LEVEL -

PROJECTION

ALL DIMENSIONS AND TOLERANCES APPLY TO FINISHED PART IN INCHES.
 ALLOWABLE TOLERANCES UNLESS SPECIFIED OTHERWISE: NONE ± 0.5
 X.X DECIMAL ± 0.1 X.XX DECIMAL ± 0.02 X.XXX DECIMAL ± 0.005
 ANGLES ± 1 DEGREE SURFACE FINISH 128 microinch RMS