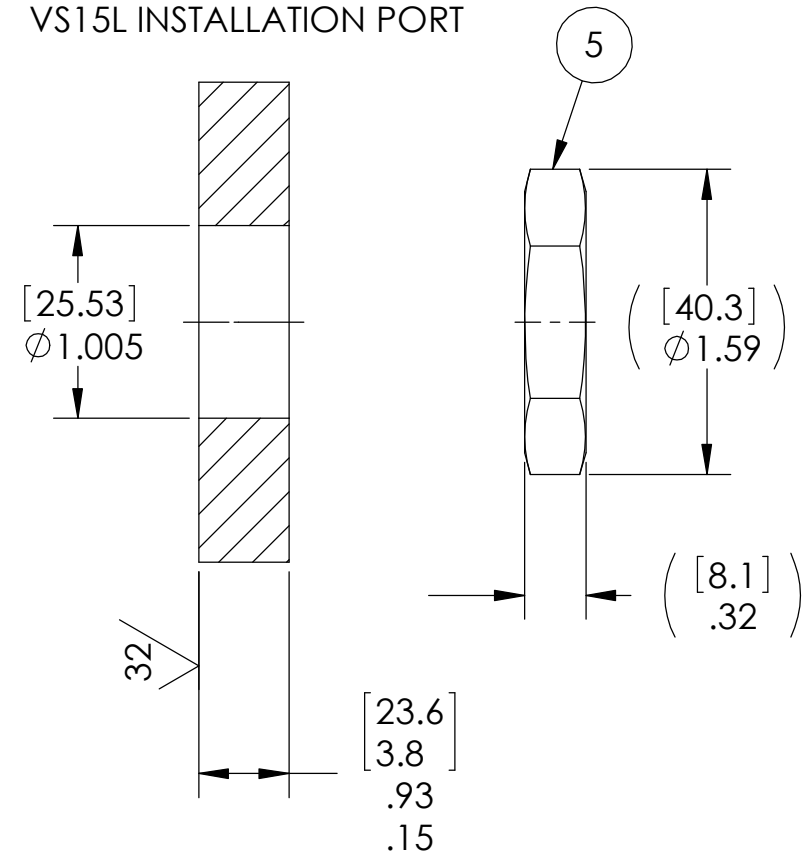


VS15L INSTALLATION PORT



NOTES:

1. HE LEAK TEST @ 1 ATM. 1X10⁻⁷ CC/SEC OR LESS. A GREEN PAINT DOT ON THE ATMOSPHERE SIDE INDICATES THE PART HAS PASSED THE TEST.
2. HYPOT 630 VDC 500 MEGOHMS MINIMUM 0.01 SECOND MINIMUM CENTER CONDUCTOR TO SHELL/HOUSING WITH MATING CONNECTORS (SHIELD IS GROUNDED).
3. CONTINUITY TEST CENTER CONDUCTOR AND SHELL 1.0 OHM MAXIMUM WITH MATING CONNECTORS.
4. SHELLS FOR ITEM 3 TO HAVE ELECTRICAL CONTINUITY WITH HOUSING (ITEM 1).
5. ALCOHOL OR FOMBLIN YVAC 3 MAY BE USED TO LUBRICATE O-RINGS FOR VACUUM HELIUM LEAK TESTING.
6. ALL TESTS ARE PERFORMED AT ROOM TEMPERATURE.
7. ALL PARTS MUST PASS ALL TESTS.
8. COSMETIC SURFACE VOIDS NOT ON O-RING SEALING SURFACES ARE ACCEPTABLE BASED ON THE SEAL'S DIAMETER:
 <= .5 [12.7] SEAL DIAMETER: Ø.035 [.89] MAX ALLOWED VOID SIZE
 > .5 [12.7] SEAL DIAMETER: Ø.060 [1.5] MAX ALLOWED VOID SIZE
9. REF-OPERATING TEMPERATURE -20°C TO 125°C.
10. DIMENSIONS ARE INCHES [millimeters].
11. PAVE-SEAL CAN BE A BI-DIRECTIONAL HERMETIC SEAL FOR VACUUM AND MOST PRESSURES. FOR PRESSURES ABOVE 150 PSI (10 BAR), CHECK WITH SALES ENGINEERING.

5	1	0183	NUT VS15-SS
4	1	-215 VITON	O-RING -215 VITON 75
3	2	AMPH# 31-2221	RCPT BNC UG-1094A/U 50 OHM
2	A/R	PAVE-Seal 150HV	EPOXY HIGH VOLTAGE BLUE
1	1	0161	HOUSING VS15L-SS
ITEM	QTY	PART NUMBER	DESCRIPTION

2751 Thunderhawk Court
Dayton, OH 45414-3445
U.S.A.
tel (937) 890-1100
fax (937) 8905165
www.pavetechnologyco.com

PAVE technology co.

DESCRIPTION
VS15L-SS-150HV-1-BNC-BNC GROUNDED SHIELD

PART NUMBER
5302

MATERIAL NOTED

REVISION LEVEL -

PROJECTION

ALL DIMENSIONS AND TOLERANCES APPLY TO FINISHED PART IN INCHES.
 ALLOWABLE TOLERANCES UNLESS SPECIFIED OTHERWISE: NONE ±0.5
 X.X DECIMAL ±0.1 X.XX DECIMAL ±0.02 X.XXX DECIMAL ±0.005
 ANGLES ±1 DEGREE. SURFACE FINISH 128 microinch RMS