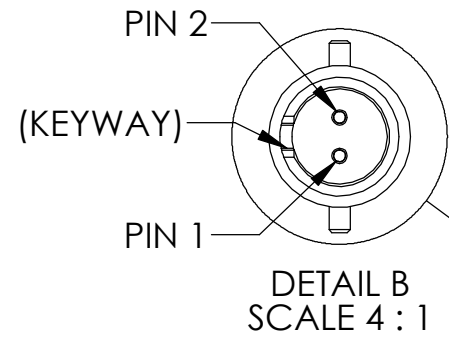
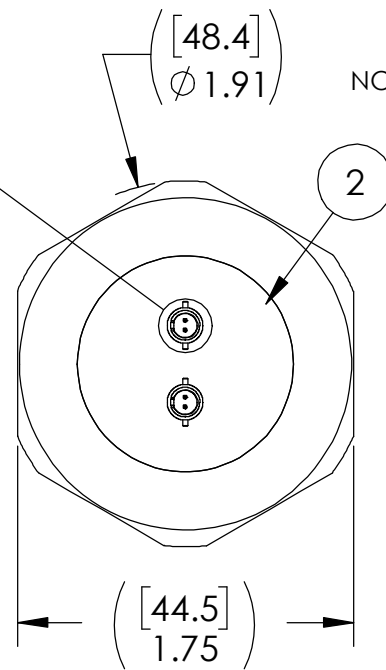


REF-ITEM 3 MATING VIEW



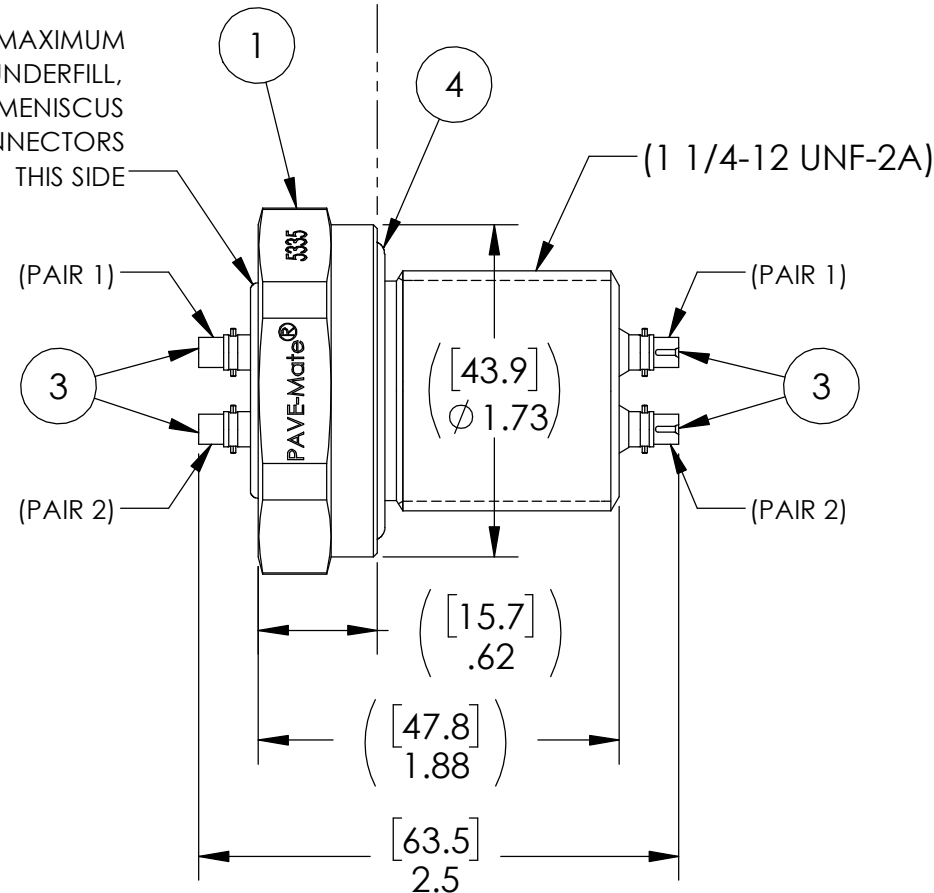
PINOUT TABLE

ATMOSPHERE	VACUUM
PAIR 1/ PIN 1	PAIR 1/ PIN 1
PAIR 1/ PIN 2	PAIR 1/ PIN 2
PAIR 1 SHELL	PAIR 1 SHELL
PAIR 2/ PIN 1	PAIR 2/ PIN 1
PAIR 2/ PIN 2	PAIR 2/ PIN 2
PAIR 2 SHELL	PAIR 2 SHELL

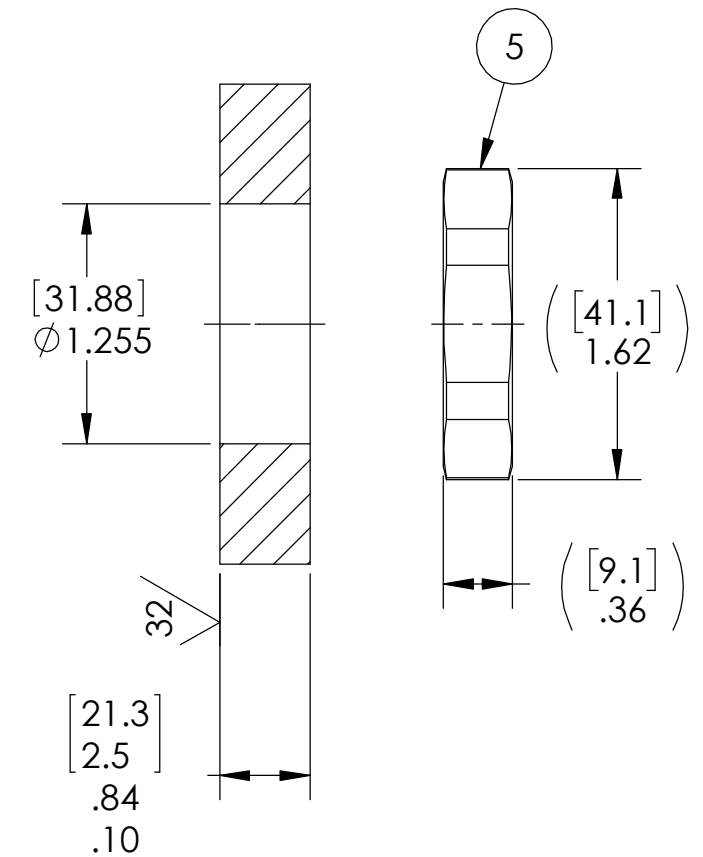


.06 [1.5] MAXIMUM OVER/UNDERFILL, NOT INCLUDING MENISCUS ON CONNECTORS THIS SIDE

ATMOSPHERE | VACUUM



VS18 INSTALLATION PORT



NOTES:

- HE LEAK TEST @ 1 ATM. 1X10<sup>-7</sup> CC/SEC OR LESS. A GREEN PAINT DOT ON THE ATMOSPHERE SIDE INDICATES THE PART HAS PASSED THE TEST.
- HYPOT 630 VDC 500 MEGOHMS MINIMUM 0.01 SECOND MINIMUM PIN TO PIN TO SHIELD AND HOUSING WITH MATING CONNECTORS.
- CONTINUITY TEST <0.5 Ohm PIN TO PIN AND CONNECTOR SHELL TO CONNECTOR SHELL WITH MATING CONNECTORS.
- CONNECTOR SHELLS FOR ITEM 3, AND HOUSING (ITEM 1) TO HAVE ELECTRICAL CONTINUITY.
- CONNECTOR POSITIONING IS APPROXIMATE AND VARIABLE.
- ALCOHOL OR FOMBLIN YVAC 3 MAY BE USED TO LUBRICATE O-RINGS FOR VACUUM HELIUM LEAK TESTING.
- ALL TESTS ARE PERFORMED AT ROOM TEMPERATURE.
- ALL PARTS MUST PASS ALL TESTS.
- COSMETIC SURFACE VOIDS NOT ON O-RING SEALING SURFACES ARE ACCEPTABLE BASED ON THE SEAL'S DIAMETER:  
 <= .5 [12.7] SEAL DIAMETER: Ø .035 [.89] MAX ALLOWED VOID SIZE  
 > .5 [12.7] SEAL DIAMETER: Ø .060 [1.5] MAX ALLOWED VOID SIZE
- REF-OPERATING TEMPERATURE -20 °C TO 105 °C.
- DIMENSIONS ARE INCHES [millimeters].
- PAVE-SEAL CAN BE A BI-DIRECTIONAL HERMETIC SEAL FOR VACUUM AND MOST PRESSURES. FOR PRESSURES ABOVE 150 PSI (10 BAR), CHECK WITH SALES ENGINEERING.

5	1	1014	NUT VS18-SS
4	1	-219 VITON	O-RING -219 VITON 75
3	4	CJTTPHHSTTH1	STRAIGHT CIRCULAR JACK TWINAX 100 OHM GOLD PLATED BRONZE PINS/BRASS SHELL PTFE INSULATOR SAMTEC
2	A/R	PAVE-Seal 150	EPOXY BLACK
1	1	0660	HOUSING VS18-SS
ITEM	QTY	PART NUMBER	DESCRIPTION

2751 Thunderhawk Court  
 Dayton, OH 45414-3445  
 U.S.A.  
 tel (937) 890-1100  
 fax (937) 8905165  
 www.pavetechnologyco.com

DESCRIPTION  
 VS18-SS-150-2-TWINAX-TWINAX

PART NUMBER  
**5335**

MATERIAL NOTED

REVISION LEVEL -

PROJECTION

ALL DIMENSIONS AND TOLERANCES APPLY TO FINISHED PART IN INCHES.  
 ALLOWABLE TOLERANCES UNLESS SPECIFIED OTHERWISE: NONE ±0.5  
 X.X DECIMAL ±0.1 X.XX DECIMAL ±0.02 X.XXX DECIMAL ±0.005  
 ANGLES ±1 DEGREE SURFACE FINISH 128 microinch RMS