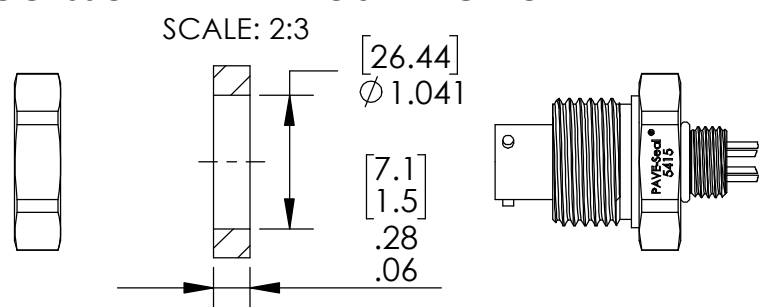
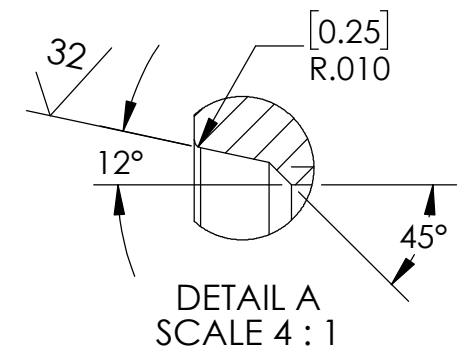
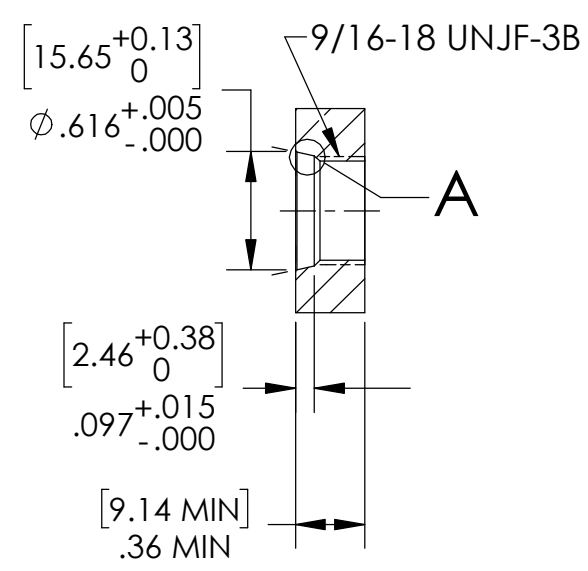


REF-ACCESSORY PLATE MOUNTING HOLE



SO9 INSTALLATION PORT (FOR REFERENCE ONLY)



| ITEM 3 POSITION | A | B | C | D | E | F |
|-----------------|------|-------|--------|-----|-------|--------|
| WIRE COLOR | BLUE | GREEN | ORANGE | RED | WHITE | YELLOW |

- NOTES:
- LEAK TEST: 80 PSI, NO BUBBLES 1 MINUTE MINIMUM. A GREEN PAINT DOT ON THE ATMOSPHERE SIDE INDICATES THE PART HAS PASSED THE TEST.
 - HYPOT 630 VDC 500 MEGOHMS MINIMUM 0.01 SECOND MINIMUM PIN TO PIN AND HOUSING WITH MATING CONNECTOR.
 - CONTINUITY TEST <0.5 OHM MATING CONNECTOR TO WIRE ENDS.
 - ALL TESTS ARE PERFORMED AT ROOM TEMPERATURE.
 - ALL PARTS MUST PASS ALL TESTS.
 - WIRE EXIT POSITIONING IS APPROXIMATE & VARIABLE.
 - COSMETIC SURFACE VOIDS NOT ON O-RING SEALING SURFACES ARE ACCEPTABLE BASED ON THE SEAL'S DIAMETER:
 <= .5 [12.7] SEAL DIAMETER: Ø .035 [.89] MAX ALLOWED VOID SIZE
 > .5 [12.7] SEAL DIAMETER: Ø .060 [1.5] MAX ALLOWED VOID SIZE
 - REF-OPERATING TEMPERATURE RANGE -40 °C TO 125 °C.
 - DIMENSIONS ARE INCHES [millimeters].
 - PAVE-SEAL CAN BE A BI-DIRECTIONAL HERMETIC SEAL FOR VACUUM AND MOST PRESSURES. FOR PRESSURES ABOVE 150 PSI (10 BAR), CHECK WITH SALES ENGINEERING.
 - REF-ITEMS 1 & 12 FINISHED PER MIL-A-8625, TYPE II, CLASS 2 (RED).
 - REF-MATERIAL FOR ITEMS 1 & 12 SHALL BE 7075-T7351 PER AMS 4124/ AMS-QQ-A-225/9 OR 6061-T6 PER AMS-QQ-A-225/8.

| ITEM | QTY | PART NUMBER | DESCRIPTION |
|------|-----|------------------------|---|
| 12 | 1 | 5437 SEE NOTES 11 & 12 | NUT 1"-12 UNF-AL (ANODIZED) |
| 11 | A/R | PARKER O-LUBE | LUBRICANT O-RING BARIUM-BASED |
| 10 | 1 | -906 NITRILE LT | O-RING -906 N602-70 M29512-06 |
| 9 | 1 | TZ22 YELLOW /43 | WIRE 22 TEFZEL M22759/43-22-4 19/#34 |
| 8 | 1 | TZ22 WHITE /43 | WIRE 22 TEFZEL M22759/43-22-9 19/#34 |
| 7 | 1 | TZ22 RED /43 | WIRE 22 TEFZEL M22759/43-22-2 19/#34 |
| 6 | 1 | TZ22 ORANGE /43 | WIRE 22 TEFZEL M22759/43-22-3 19/#34 |
| 5 | 1 | TZ22 GREEN /43 | WIRE 22 TEFZEL M22759/43-22-5 19/#34 |
| 4 | 1 | TZ22 BLUE /43 | WIRE 22 TEFZEL M22759/43-22-6 19/#34 |
| 3 | 1 | SC3112E10-6P | RCPT 6#20 GOLD PLATED COPPER ALLOY PINS, NEOPRENE INSERT, NICKEL PLATED ALUMINUM SHELL MIL-C-26482 SERIES 1 |
| 2 | A/R | PAVE-Seal 200 | EPOXY BLACK |
| 1 | 1 | 5432 SEE NOTES 11 & 12 | HOUSING SO9X-AL (ANODIZED) |

PAVE technology co.

2751 Thunderhawk Court
Dayton, OH 45414-3445
U.S.A.
tel (937) 890-1100
fax (937) 8905165
www.pavetechnologyco.com

DESCRIPTION
SO9X-AL-200-6-TZ22-3112P-24

PART NUMBER
5415

MATERIAL NOTED

REVISION LEVEL
A

PROJECTION

ALL DIMENSIONS AND TOLERANCES APPLY TO FINISHED PART IN INCHES.
 ALLOWABLE TOLERANCES UNLESS SPECIFIED OTHERWISE: NONE ±0.5
 X.X DECIMAL ±0.1 X.XX DECIMAL ±0.02 X.XXX DECIMAL ±0.005
 ANGLES ±1 DEGREE SURFACE FINISH 128 microinch RMS