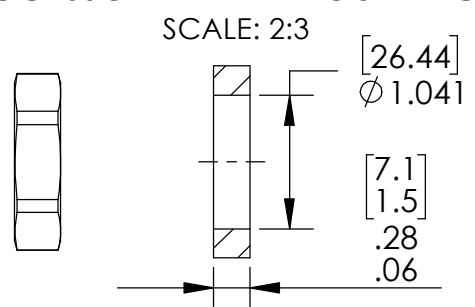


REF-ACCESSORY PLATE MOUNTING HOLE



WIRE COLOR TABLE						
ITEM 3 POSITION	A	B	C	D	E	F
WIRE COLOR	BLUE	GREEN	ORANGE	RED	WHITE	YELLOW

NOTES:

- LEAK TEST: 80 PSI, NO BUBBLES 1 MINUTE MINIMUM. A GREEN PAINT DOT ON THE ATMOSPHERE SIDE INDICATES THE PART HAS PASSED THE TEST.
- HYPOT 630 VDC 500 MEGOHMS MINIMUM 0.01 SECOND MINIMUM PIN TO PIN AND HOUSING WITH MATING CONNECTOR.
- CONTINUITY TEST <0.5 OHM MATING CONNECTOR TO WIRE ENDS.
- ALL TESTS ARE PERFORMED AT ROOM TEMPERATURE.
- ALL PARTS MUST PASS ALL TESTS.
- WIRE EXIT POSITIONING IS APPROXIMATE & VARIABLE.
- COSMETIC SURFACE VOIDS NOT ON O-RING SEALING SURFACES ARE ACCEPTABLE BASED ON THE SEAL'S DIAMETER:
 <= .5 [12.7] SEAL DIAMETER: ϕ .035 [.89] MAX ALLOWED VOID SIZE
 > .5 [12.7] SEAL DIAMETER: ϕ .060 [1.5] MAX ALLOWED VOID SIZE
- REF-OPERATING TEMPERATURE RANGE -40°C TO 125°C.
- DIMENSIONS ARE INCHES [millimeters].
- PAVE-SEAL CAN BE A BI-DIRECTIONAL HERMETIC SEAL FOR VACUUM AND MOST PRESSURES. FOR PRESSURES ABOVE 150 PSI (10 BAR), CHECK WITH SALES ENGINEERING.
- REF-ITEMS 1 & 12 FINISHED PER MIL-A-8625, TYPE II, CLASS 2 (RED).
- REF-MATERIAL FOR ITEMS 1 & 12 SHALL BE 7075-T7351 PER AMS 4124/AMS-QQ-A-225/9 OR 6061-T6 PER AMS-QQ-A-225/8.

12	1	5437	SEE NOTES 11 & 12	NUT 1"-12 UNF-AL (ANODIZED)
11	A/R	PARKER O-LUBE		LUBRICANT O-RING BARIUM-BASED
10	1	-906 NITRILE LT		O-RING -906 N602-70 M29512-06
9	1	TZ22 YELLOW /43		WIRE 22 TEFZEL M22759/43-22-4 19/#34
8	1	TZ22 WHITE /43		WIRE 22 TEFZEL M22759/43-22-9 19/#34
7	1	TZ22 RED /43		WIRE 22 TEFZEL M22759/43-22-2 19/#34
6	1	TZ22 ORANGE /43		WIRE 22 TEFZEL M22759/43-22-3 19/#34
5	1	TZ22 GREEN /43		WIRE 22 TEFZEL M22759/43-22-5 19/#34
4	1	TZ22 BLUE /43		WIRE 22 TEFZEL M22759/43-22-6 19/#34
3	1	SC3112E10-6P		RCPT 6#20 GOLD PLATED COPPER ALLOY PINS, NEOPRENE INSERT, NICKEL PLATED ALUMINUM SHELL MIL-C-26482 SERIES 1
2	A/R	PAVE-Seal 200		EPOXY BLACK
1	1	5432	SEE NOTES 11 & 12	HOUSING SO9X-AL (ANODIZED)
ITEM	QTY	PART NUMBER		DESCRIPTION

PAVE technology co.

2751 Thunderhawk Court
Dayton, OH 45414-3445
U.S.A.
tel (937) 890-1100
fax (937) 8905165
www.pavetechnologyco.com

DESCRIPTION
SO9X-AL-200-6-TZ22-3112P-24

PART NUMBER
5415

MATERIAL NOTED

REVISION LEVEL
C

PROJECTION

ALL DIMENSIONS AND TOLERANCES APPLY TO FINISHED PART IN INCHES.
 ALLOWABLE TOLERANCES UNLESS SPECIFIED OTHERWISE: NONE ±0.5
 X.X DECIMAL ±0.1 X.XX DECIMAL ±0.02 X.XXX DECIMAL ±0.005
 ANGLES ±1 DEGREE SURFACE FINISH 128 microinch RMS