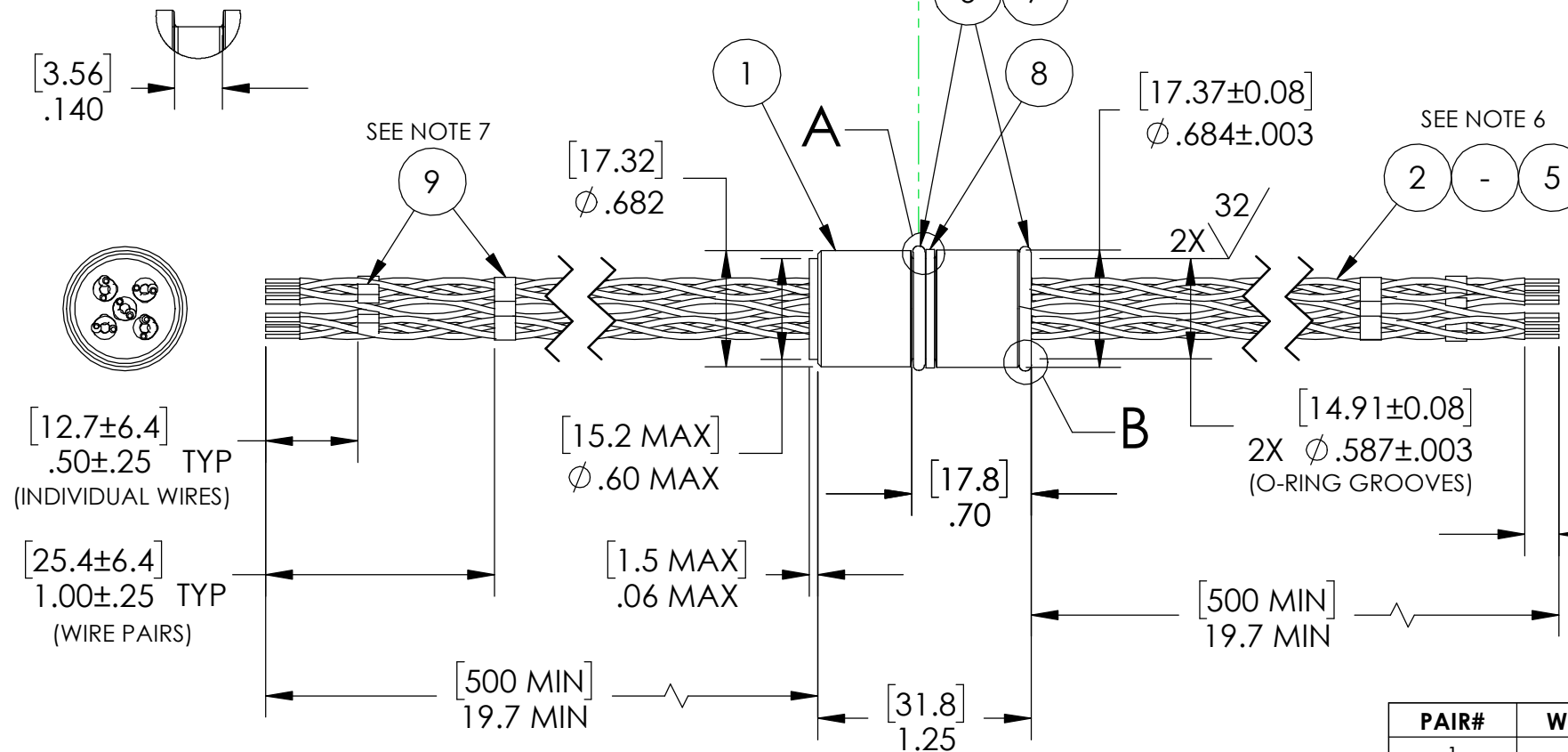
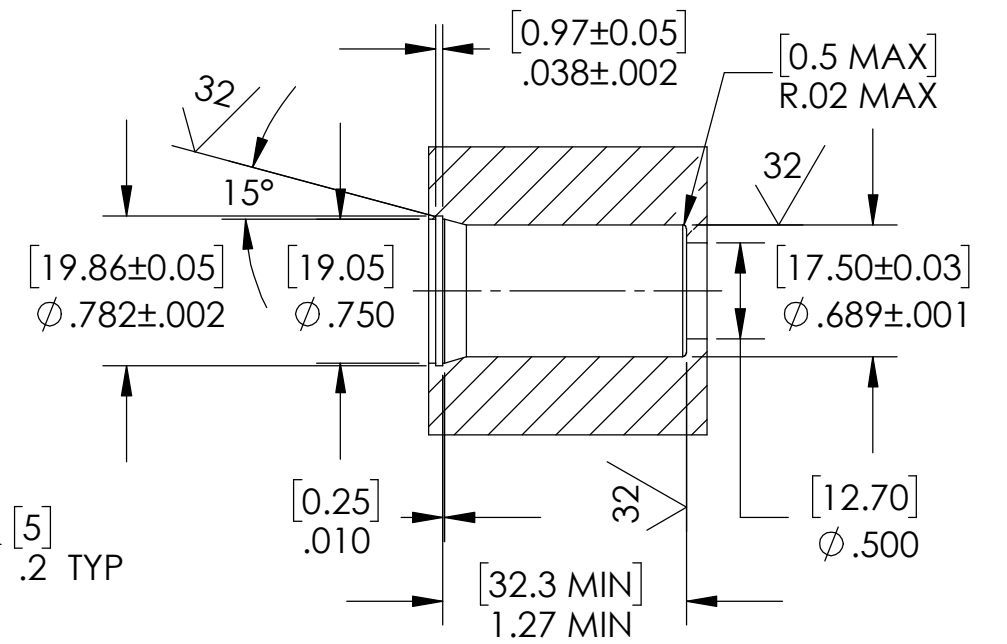


DETAIL A
SCALE 2 : 1



SP11H INSTALLATION PORT

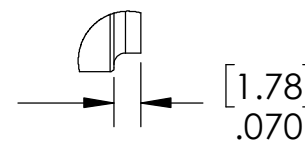


RECOMMENDED RETAINING RING
SMALLEY WH-75 OR EQUAL

NOTES:

1. LEAK TEST: 5000 PSI, NO BUBBLES 30 SECONDS MINIMUM. A GREEN PAINT DOT ON THE PRESSURE SIDE INDICATES THE PART HAS PASSED THE TEST.
2. HYPOT 630 VDC 500 MEGOHMS MINIMUM 0.01 SECOND MINIMUM WIRE TO WIRE AND SALTWATER, WITH EPOXY COMPLETELY SUBMERGED IN THE SALTWATER.
3. ALL TESTS ARE PERFORMED AT ROOM TEMPERATURE.
4. ALL PARTS MUST PASS ALL TESTS.
5. WIRE POSITIONING IS APPROXIMATE & VARIABLE.
6. WIRES ARE TWISTED INTO PAIRS ON BOTH SIDES, COLORS PER TABLE, APPROXIMATELY 1/4 TO 1/2 TWIST PER INCH [10 TO 20 TPM].
7. INDIVIDUAL WIRES WILL BE LABELED 1-10 AND TWISTED PAIRS LABELED 1-5, PER TABLE, ON BOTH ENDS WITH THE SAME NUMBER.
8. COSMETIC SURFACE VOIDS NOT ON O-RING SEALING SURFACES ARE ACCEPTABLE BASED ON THE SEAL'S DIAMETER:
 <= .5 [12.7] SEAL DIAMETER: ϕ .035 [.89] MAX ALLOWED VOID SIZE
 > .5 [12.7] SEAL DIAMETER: ϕ .060 [1.5] MAX ALLOWED VOID SIZE
9. REF-OPERATING TEMPERATURE RANGE -34 °C TO 121 °C.
10. DIMENSIONS ARE INCHES [millimeters].
11. PAVE-SEAL CAN BE A BI-DIRECTIONAL HERMETIC SEAL FOR VACUUM AND MOST PRESSURES. FOR PRESSURES ABOVE 150 PSI (10 BAR), CHECK WITH SALES ENGINEERING.

DETAIL B
SCALE 2 : 1



PAIR#	WIRE#	COLOR
1	1	RED
1	2	BLACK
2	3	RED
2	4	WHITE
3	5	RED
3	6	GREEN
4	7	WHITE
4	8	GREEN
5	9	WHITE
5	10	BLACK

ITEM	QTY	PART NUMBER	DESCRIPTION
9	30	-	BRADY WIRE MARKERS NUMBERED 1-10
8	1	B/U RING -015	RING BACK UP -015 TEFLON SCARF CUT
7	A/R	PARKER O-LUBE	LUBRICANT O-RING BARIUM-BASED
6	2	-015 N674-70	O-RING -015 NBR 70
5	3	TZ22 WHT 19	WIRE 22TZ MILW22759/44A .006 19/#34
4	3	TZ22 RED 19	WIRE 22TZ MILW22759/44A .006 19/#34
3	2	TZ22 GRN 19	WIRE 22TZ MILW22759/44A .006 19/#34
2	2	TZ22 BLACK	WIRE 22TZ MILW22759/44A .006 19/#34
1	A/R	PAVE-Seal 150	EPOXY BLACK

PAVE technology co.
 2751 Thunderhawk Court
 Dayton, OH 45414-3445
 U.S.A.
 tel (937) 890-1100
 fax (937) 8905165
 www.pavetechnologyco.com

DESCRIPTION
SP11H-E-150-10-TZ22-50-50CM

PART NUMBER
5464

MATERIAL NOTED

REVISION LEVEL
A

PROJECTION

ALL DIMENSIONS AND TOLERANCES APPLY TO FINISHED PART IN INCHES.
 ALLOWABLE TOLERANCES UNLESS SPECIFIED OTHERWISE: NONE ±0.5
 X.X DECIMAL ±0.1 X.XX DECIMAL ±0.02 X.XXX DECIMAL ±0.005
 ANGLES ±1 DEGREE SURFACE FINISH 128 microinch RMS