

(CONNECTORS NOT SHOWN THIS VIEW FOR CLARITY)

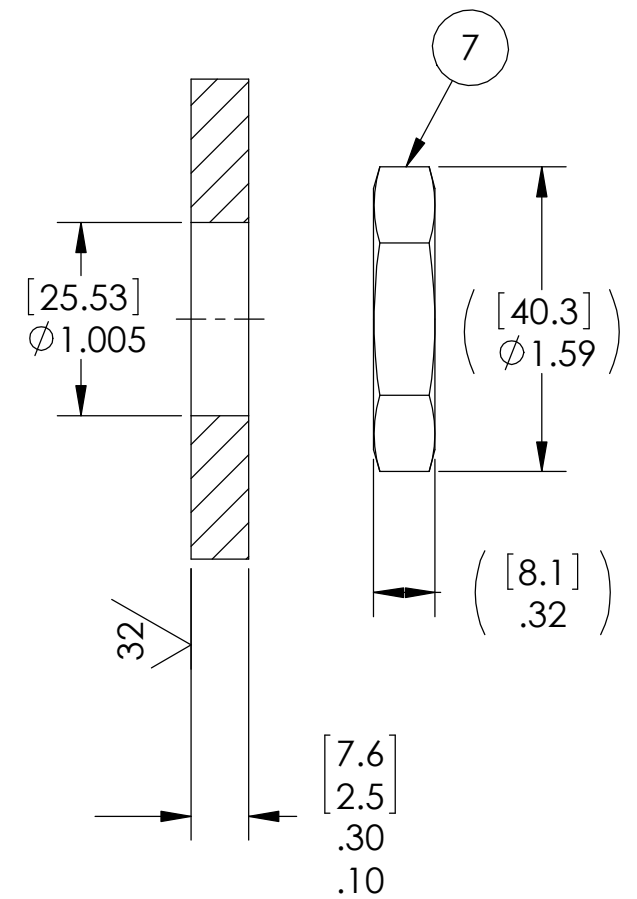
.06 [1.5] MAXIMUM OVER/UNDERFILL NOT INCLUDING MENISCUS ON WIRES, SPACING CONTROL NOT REQUIRED THIS SIDE

NOTES:

1. LEAK TEST: 2000 PSI, NO N2 BUBBLES 30 SECONDS MINIMUM. A GREEN PAINT DOT ON THE ATMOSPHERE SIDE INDICATES THE PART HAS PASSED THE TEST.
2. HYPOT 630 VDC 500 MEGOHMS MINIMUM 0.01 SECOND MINIMUM WIRE TO WIRE TO SHIELDS, THERMOCOUPLE PAIRS AND HOUSING.
3. CONTINUITY TEST COAXIAL SHIELDS <0.5 OHM END TO END.
4. ALL TESTS ARE PERFORMED AT ROOM TEMPERATURE.
5. ALL PARTS MUST PASS ALL TESTS.
6. WIRE POSITIONING IS APPROXIMATE & VARIABLE, WIRES ARE NOT REQUIRED TO BEND SHARPLY AT EPOXY SEAL SURFACE.
7. COSMETIC SURFACE VOIDS NOT ON O-RING SEALING SURFACES ARE ACCEPTABLE BASED ON THE SEAL'S DIAMETER:
 <= .5 [12.7] SEAL DIAMETER: ϕ .035 [89] MAX ALLOWED VOID SIZE
 > .5 [12.7] SEAL DIAMETER: ϕ .060 [1.5] MAX ALLOWED VOID SIZE
8. DIMENSIONS ARE INCHES [millimeters].
9. REF-OPERATING TEMPERATURE RANGE -20 °C TO 60 °C.
10. PAVE-SEAL CAN BE A BI-DIRECTIONAL HERMETIC SEAL FOR VACUUM AND MOST PRESSURES. FOR PRESSURES ABOVE 150 PSI (10 BAR), CHECK WITH SALES ENGINEERING.

7	1	1129	NUT VS15-AL
6	1	-215 VITON	O-RING -215 VITON 75
5	2	5SRTC-KK-E30-36	CABLE T/C TYPE E #30 KAPTON W/WELDED BEAD & MOLED MINI TYPE E CONNECTOR 36" OAL
4	1	RG174U	CABLE COAX RG174/U 7/#34 BC PE INSULATION TC BRAID PVC JACKET
3	2	RG58U	CABLE COAX RG58/U #20 SOLID BC PE INSULATION TC BRAID PVC JACKET
2	A/R	PAVE-Seal 150	EPOXY BLACK
1	1	1898	HOUSING VS15-AL
ITEM	QTY	PART NUMBER	DESCRIPTION

VS15 INSTALLATION PORT



ALL DIMENSIONS AND TOLERANCES APPLY TO FINISHED PART IN INCHES.
 ALLOWABLE TOLERANCES UNLESS SPECIFIED OTHERWISE: NONE ±0.5
 X.X DECIMAL ±0.1 X.XX DECIMAL ±0.02 X.XXX DECIMAL ±0.005
 ANGLES ±1 DEGREE SURFACE FINISH 128 microinch RMS

PAVE technology co.
 2751 Thunderhawk Court
 Dayton, OH 45414-3445
 U.S.A.
 tel (937) 890-1100
 fax (937) 8905165
 www.pavetechnologyco.com

DESCRIPTION
 VS15-AL-150-1/2/2-RG174/RG58/KE30-72-29

PART NUMBER
5482

MATERIAL NOTED
 REVISION LEVEL A
 PROJECTION