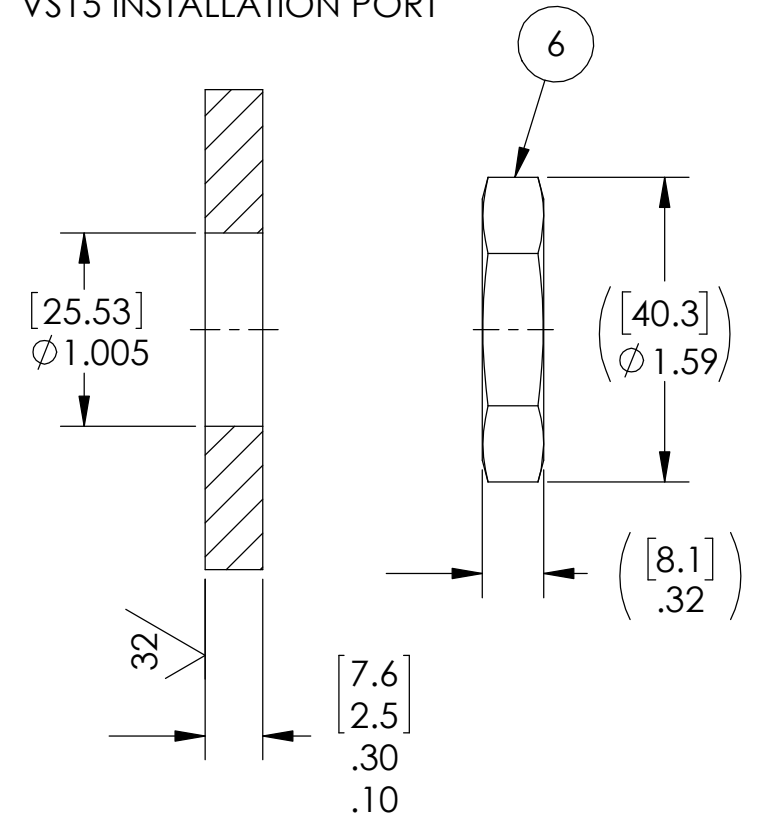


VS15 INSTALLATION PORT



PINOUT	
ATM	VAC
1	1
2	2
3	3
4	4
8	5
9	6
7	7
5	8
6	9
SHELL	SHELL

NOTES:

- LEAK TESTING, A GREEN PAINT DOT INDICATES THE PART HAS PASSED THE SPECIFIED TEST:  
5607 ONLY: HE LEAK TEST @ 1 ATM. 1X10<sup>-7</sup> CC/SEC OR LESS.  
5607-1 ONLY: 1500 PSI, NO N<sub>2</sub> BUBBLES 30 SECONDS MINIMUM.  
REF-QUALIFICATION LEAK TESTING FOR 5607-1 ONLY:  
(a.) PRESSURE CYCLE 1000 PSI, HOLD FOR 5 MINUTES NO N<sub>2</sub> BUBBLES, CYCLE 3 TIMES. (b.) 1500 PSI, NO N<sub>2</sub> BUBBLES 1 HOUR MINIMUM.
- PART IS FUNCTIONALLY TESTED WITH MATING USB 3.0 CABLES AND A PC TO TRANSFER A FILE AT FASTER THAN 90Mbps.
- ALCOHOL OR FOMBLIN YVAC 3 MAY BE USED TO LUBRICATE O-RINGS FOR VACUUM HELIUM LEAK TESTING.
- ALL TESTS ARE PERFORMED AT ROOM TEMPERATURE.
- ALL PARTS MUST PASS ALL TESTS.
- COSMETIC SURFACE VOIDS NOT ON O-RING SEALING SURFACES ARE ACCEPTABLE BASED ON THE SEAL'S DIAMETER:  
<= .5 [12.7] SEAL DIAMETER: Ø .035 [.89] MAX ALLOWED VOID SIZE  
> .5 [12.7] SEAL DIAMETER: Ø .060 [1.5] MAX ALLOWED VOID SIZE
- REF-OPERATING TEMPERATURE RANGE -20 °C TO 85 °C.
- DIMENSIONS ARE INCHES [millimeters].
- PAVE-SEAL CAN BE A BI-DIRECTIONAL HERMETIC SEAL FOR VACUUM AND MOST PRESSURES. FOR PRESSURES ABOVE 150 PSI (10 BAR), CHECK WITH SALES ENGINEERING.

ITEM	QTY	PART NUMBER	DESCRIPTION
6	1	0183	NUT VS15-SS
5	1	-215 VITON	O-RING -215 VITON 75
4	A/R	FIT-221L 1/2"	TUBING SHRINK LSZH POLYOLEFIN BLACK
3	1	AC-USB3-AAB	ADAPTER USB3.0 TYPE A FEMALE (2X) CROSSOVER PCB
2	A/R	PAVE-Seal 150	EPOXY BLACK
1	1	0159	HOUSING VS15-SS

**PAVE technology co.**  
 2751 Thunderhawk Court  
 Dayton, OH 45414-3445  
 U.S.A.  
 tel (937) 890-1100  
 fax (937) 8905165  
 www.pavetechnologyco.com

DESCRIPTION  
 VS15-SS-150-1-USBAfemale CROSSOVER USB3.0

PART NUMBER  
**5607**

MATERIAL NOTED

REVISION LEVEL  
 A

PROJECTION

ALL DIMENSIONS AND TOLERANCES APPLY TO FINISHED PART IN INCHES.  
 ALLOWABLE TOLERANCES UNLESS SPECIFIED OTHERWISE: NONE ±0.5  
 X.X DECIMAL ±0.1 X.XX DECIMAL ±0.02 X.XXX DECIMAL ±0.005  
 ANGLES ±1 DEGREE SURFACE FINISH 128 microinch RMS