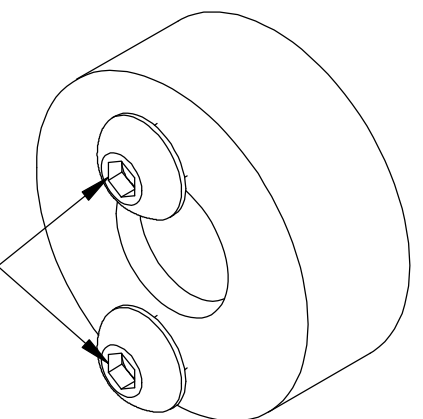


REF- SP6 PORT WITH SCREWS

USE APPROPRIATE  
LENGTH M4X0.7  
BUTTON HEAD  
SCREWS TO SECURE  
PART IN PORT



#### NOTES:

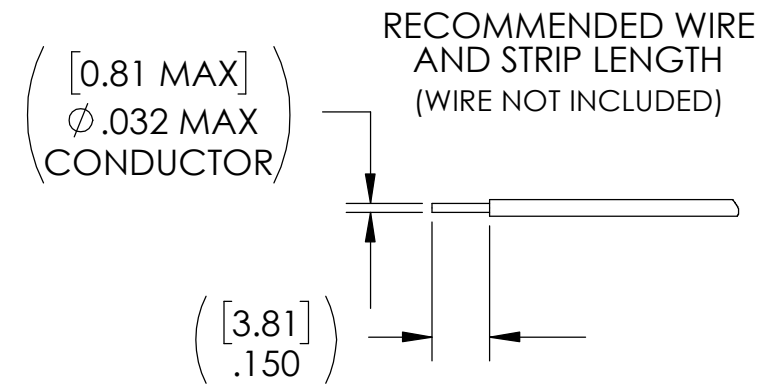
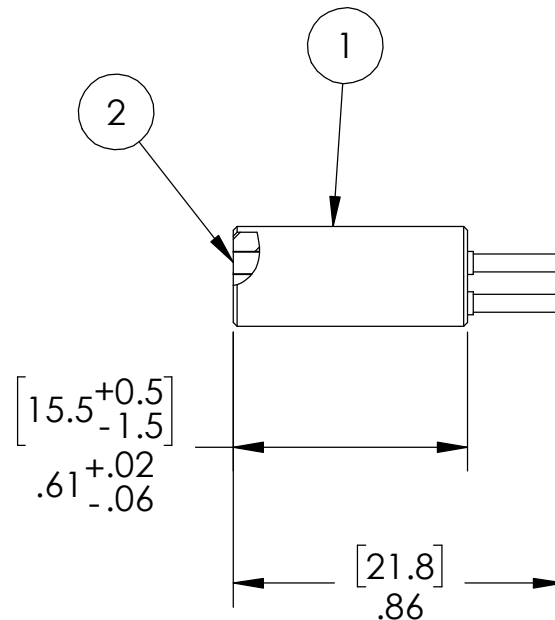
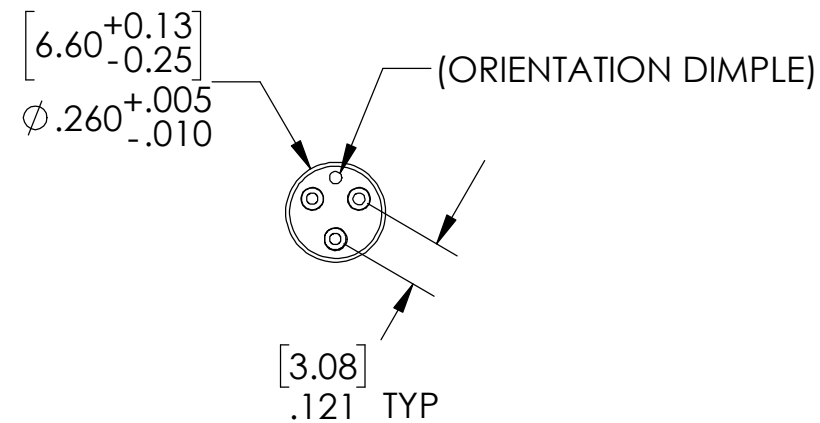
1. HE LEAK TEST @ 1 ATM.  $1 \times 10^{-9}$  CC/SEC OR LESS. LUBRICATE O-RING WITH ALCOHOL TO INSTALL, A GREEN PAINT DOT ON THE ATMOSPHERE SIDE INDICATES THE PART HAS PASSED THE TEST.
2. HYPOT 630 VDC 500 MEGOHMS MINIMUM 0.01 SECOND MINIMUM WIRE TO WIRE WITH MATING CONNECTOR (PAVE 5871).
3. CONTINUITY TEST  $<0.5$  OHM WIRE END TO MATING CONNECTOR.
4. ALL TESTS ARE PERFORMED AT ROOM TEMPERATURE.
5. ALL PARTS MUST PASS ALL TESTS.
6. COSMETIC SURFACE VOIDS NOT ON O-RING SEALING SURFACES ARE ACCEPTABLE BASED ON THE SEAL'S DIAMETER:  
 $\leq .5$  [12.7] SEAL DIAMETER:  $\phi .035$  [.89] MAX ALLOWED VOID SIZE  
 $> .5$  [12.7] SEAL DIAMETER:  $\phi .060$  [1.5] MAX ALLOWED VOID SIZE
7. DIMENSION IS OVER-ALL-LENGTH EXCLUDING OVERFILL ON PRESSURE SIDE OF HOUSING.
8. REF-OPERATING TEMPERATURE RANGE  $-20^{\circ}\text{C}$  TO  $150^{\circ}\text{C}$ .
9. REF-PARTS ARE DEFLASHED ON PARTING LINE  $+0.005$  [0.13] MAXIMUM.
10. DIMENSIONS ARE INCHES [millimeters].
11. PAVE-SEAL CAN BE A BI-DIRECTIONAL HERMETIC SEAL FOR VACUUM AND MOST PRESSURES. FOR PRESSURES ABOVE 150 PSI (10 BAR), CHECK WITH SALES ENGINEERING.

PIN-OUT TABLE	
POSITION	COLOR
1	RED
2	BLACK
3	YELLOW

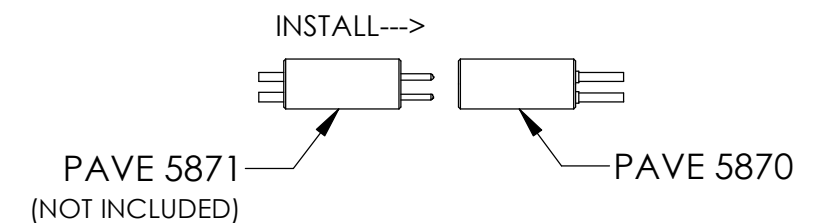
7	1	-010 VITON	O-RING -010 VITON 75
6	3	M39029-57-354	CONTACT #22D SOC
5	1	E24 YELLOW	WIRE 24E MIL-W-16878/4 7/#32
4	1	E24 RED	WIRE 24E MIL-W-16878/4 7/#32
3	1	E24 BLACK	WIRE 24E MIL-W-16878/4 7/#32
2	A/R	PAVE-Seal 200	EPOXY BLACK
1	1	0168	HOUSING SP6-E
ITEM	QTY	PART NUMBER	DESCRIPTION

		2751 Thunderhawk Court Dayton, OH 45414-3445 U.S.A. tel (937) 890-1100 fax (937) 8905165 <a href="http://www.pavetechnologyco.com">www.pavetechnologyco.com</a>	
DESCRIPTION		SP6-E-200-3-TE24-27-8T	
PART NUMBER	5869	MATERIAL	NOTED
REVISION LEVEL	A	PROJECTION	

ALL DIMENSIONS AND TOLERANCES APPLY TO FINISHED PART IN INCHES.  
 ALLOWABLE TOLERANCES UNLESS SPECIFIED OTHERWISE: NONE  $\pm 0.5$   
 X.X DECIMAL  $\pm 0.1$  X.XX DECIMAL  $\pm 0.02$  X.XXX DECIMAL  $\pm 0.005$   
 ANGLES  $\pm 1$  DEGREE SURFACE FINISH 128 microinch RMS



REF-ELECTRICAL TESTING  
SCALE: 1:1



#### NOTES:

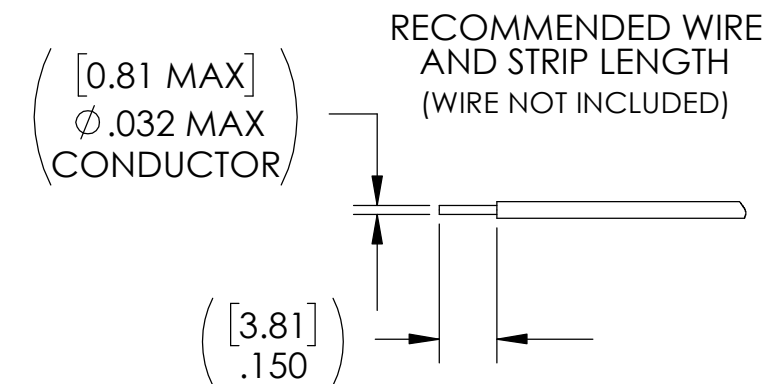
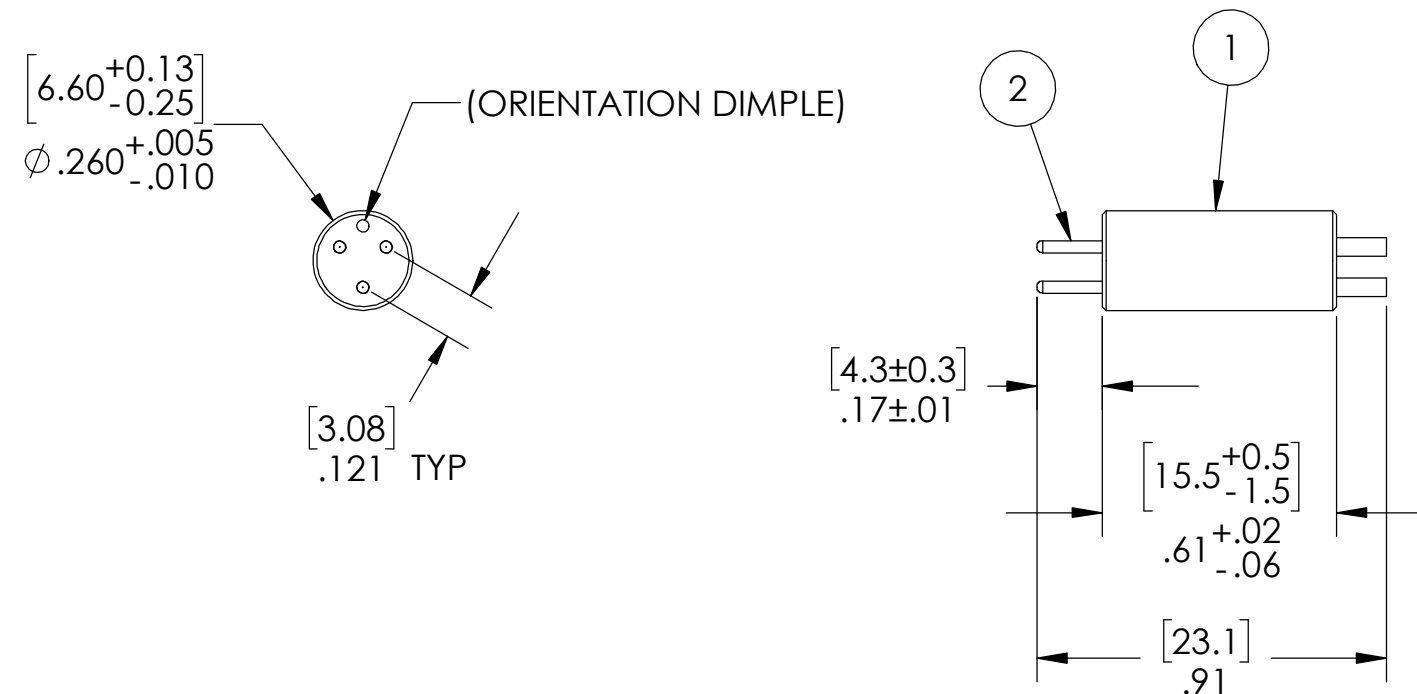
1. HYPOT 630 VDC 500 MEGOHMS MINIMUM 0.01 SECOND MINIMUM SOCKET TO SOCKET WITH MATING CONNECTOR (PAVE 5871) INSTALLED.
2. CONTINUITY TEST <0.5 OHM END TO END WITH MATING CONNECTOR (PAVE 5871) INSTALLED.
3. ALL TESTS ARE PERFORMED AT ROOM TEMPERATURE.
4. ALL PARTS MUST PASS ALL TESTS.
5. COSMETIC SURFACE VOIDS NOT ON O-RING SEALING SURFACES ARE ACCEPTABLE BASED ON THE SEAL'S DIAMETER:  
<= .5 [12.7] SEAL DIAMETER:  $\phi .035$  [.89] MAX ALLOWED VOID SIZE  
> .5 [12.7] SEAL DIAMETER:  $\phi .060$  [1.5] MAX ALLOWED VOID SIZE
6. REF-OPERATING TEMPERATURE RANGE -20°C TO 150°C.
7. DIMENSIONS ARE INCHES [millimeters].

2	3	M39029-56-348	CONTACT #22D SOC
1	A/R	PAVE-Seal 200	EPOXY BLACK HI-TEMP
ITEM	QTY	PART NUMBER	DESCRIPTION

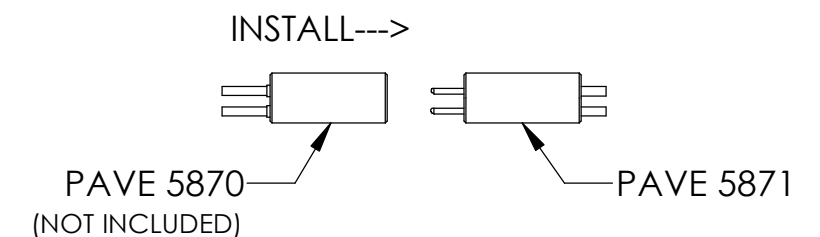
2751 Thunderhawk Court  
Dayton, OH 45414-3445  
U.S.A.  
tel (937) 890-1100  
fax (937) 8905165  
www.pavetechnologyco.com

DESCRIPTION PLUG ASSEMBLY 3#22 AWG SOCKET	
PART NUMBER <b>5870</b>	MATERIAL NOTED
REVISION LEVEL -	PROJECTION 

ALL DIMENSIONS AND TOLERANCES APPLY TO FINISHED PART IN INCHES.  
ALLOWABLE TOLERANCES UNLESS SPECIFIED OTHERWISE: NONE  $\pm 0.5$   
X.X DECIMAL  $\pm 0.1$  X.XX DECIMAL  $\pm 0.02$  X.XXX DECIMAL  $\pm 0.005$   
ANGLES  $\pm 1$  DEGREE SURFACE FINISH 128 microinch RMS



REF-ELECTRICAL TESTING  
SCALE: 1:1



#### NOTES:

1. HYPOT 630 VDC 500 MEGOHMS MINIMUM 0.01 SECOND MINIMUM PIN TO PIN WITH MATING CONNECTOR (PAVE 5870) INSTALLED.
2. CONTINUITY TEST <0.5 OHM END TO END WITH MATING CONNECTOR (PAVE 5870) INSTALLED.
3. ALL TESTS ARE PERFORMED AT ROOM TEMPERATURE.
4. ALL PARTS MUST PASS ALL TESTS.
5. COSMETIC SURFACE VOIDS NOT ON O-RING SEALING SURFACES ARE ACCEPTABLE BASED ON THE SEAL'S DIAMETER:  
 <= .5 [12.7] SEAL DIAMETER:  $\phi$ .035 [.89] MAX ALLOWED VOID SIZE  
 > .5 [12.7] SEAL DIAMETER:  $\phi$ .060 [1.5] MAX ALLOWED VOID SIZE
6. REF-OPERATING TEMPERATURE RANGE -20°C TO 150°C.
7. DIMENSIONS ARE INCHES [millimeters].

2	3	M39029/58-360	CONTACT #22D PIN
1	A/R	PAVE-Seal 200	EPOXY BLACK HI-TEMP
ITEM	QTY	PART NUMBER	DESCRIPTION

2751 Thunderhawk Court  
Dayton, OH 45414-3445  
U.S.A.  
tel (937) 890-1100  
fax (937) 8905165  
[www.pavetechnologyco.com](http://www.pavetechnologyco.com)

DESCRIPTION PLUG ASSEMBLY 3#22 AWG PIN	
PART NUMBER <b>5871</b>	MATERIAL NOTED
REVISION LEVEL -	PROJECTION 

ALL DIMENSIONS AND TOLERANCES APPLY TO FINISHED PART IN INCHES.  
 ALLOWABLE TOLERANCES UNLESS SPECIFIED OTHERWISE: NONE  $\pm 0.5$   
 X.X DECIMAL  $\pm 0.1$  X.XX DECIMAL  $\pm 0.02$  X.XXX DECIMAL  $\pm 0.005$   
 ANGLES  $\pm 1$  DEGREE SURFACE FINISH 128 microinch RMS