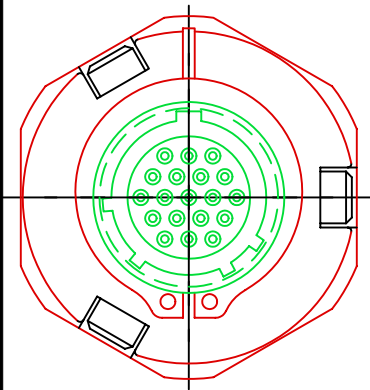


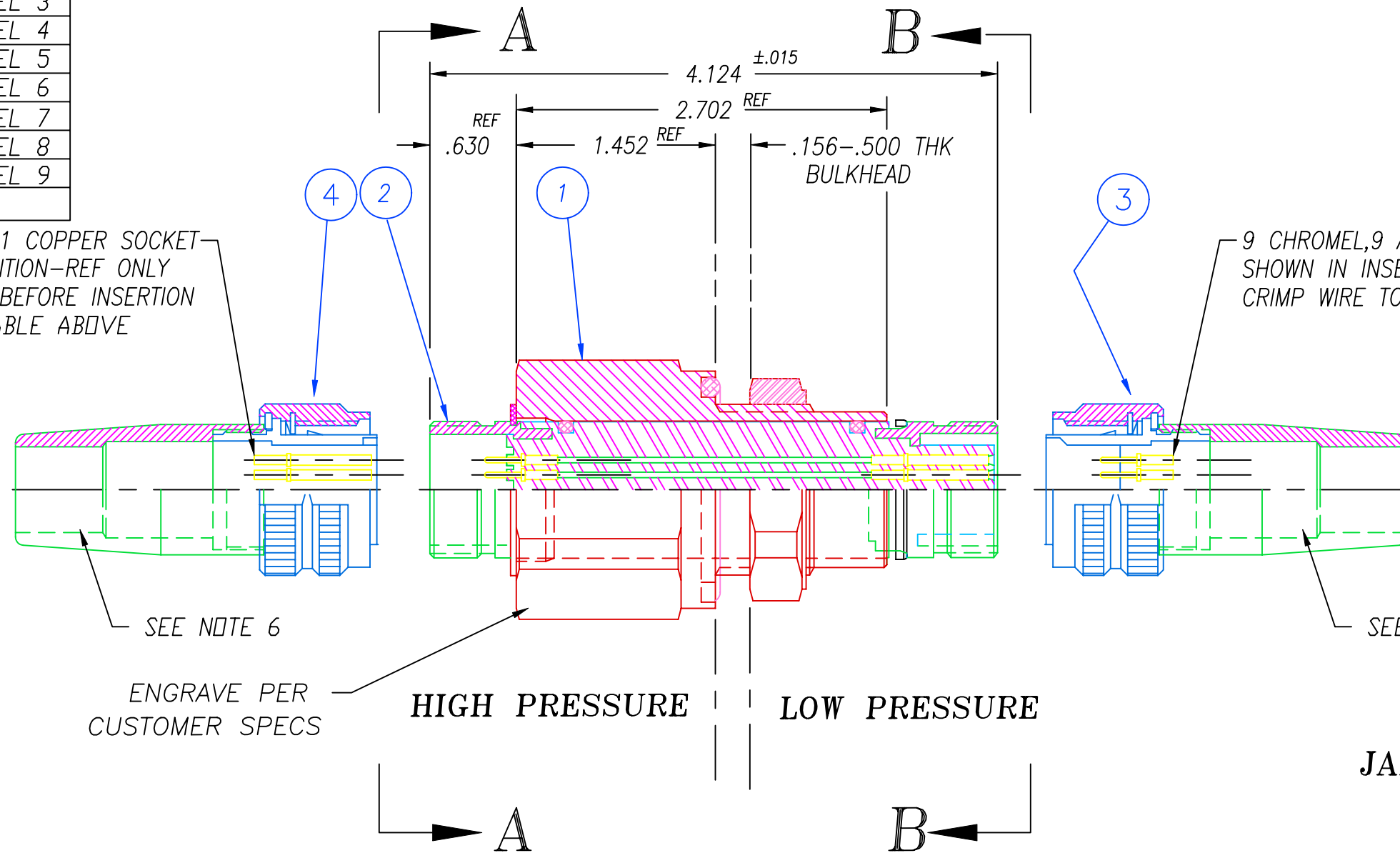
PINOUT POSITION TABLE

A	CHROMEL 1	B	ALUMEL 1
C	CHROMEL 2	D	ALUMEL 2
E	CHROMEL 3	F	ALUMEL 3
G	CHROMEL 4	H	ALUMEL 4
J	CHROMEL 5	K	ALUMEL 5
L	CHROMEL 6	M	ALUMEL 6
N	CHROMEL 7	P	ALUMEL 7
R	CHROMEL 8	S	ALUMEL 8
T	CHROMEL 9	U	ALUMEL 9
V	COPPER 1		

9 CHROMEL,9 ALUMEL & 1 COPPER SOCKET SHOWN IN INSERTION POSITION-REF ONLY
CRIMP WIRE TO CONTACT BEFORE INSERTION
PER PINOUT POSITION TABLE ABOVE



VIEW A-A



SEE NOTE 6

ENGRAVE PER CUSTOMER SPECS

HIGH PRESSURE

LOW PRESSURE

SEE NOTE 6

VIEW B-B
JAM NUT OMITTED

NOTES:

1. MATERIAL TO BE IDENTIFIED (ENGRAVED) PER CUSTOMER SPEC.
2. LEAK TESTING: NO VISIBLE BUBBLES AT 80 PSI DRY NITROGEN GAS ON THREAD SIDE.
3. OPTIONAL HELIUM LEAK TEST LESS THAN 1×10^{-6} CC/SEC
4. ELECTRICAL HYPOT TEST 630 VDC MORE THAN 500 MEGOHM
5. PACKAGE PER CUSTOMER SPECS.
6. EPOXY DISPENSING KITS PT-1064 AVAILABLE UPON REQUEST.

ITEM #	QTY	PART #	DESCRIPTION
4	1	PT-1076	PLUG ASY 19 SOC TYPE K #22
3	1	PT-1075	PLUG ASY 19 PIN TYPE K #22
2	1	PT-1074	PUSHTHRU ASY 19 TYPE K #22
1	1	PT-1007	HOUSING ASY

ALL DIMENSIONS AND TOLERANCES APPLY TO FINISHED PART IN INCHES
ALLOWABLE TOLERANCES UNLESS SPECIFIED OTHERWISE: NONE +/-0.5
.X DECIMAL +/- 0.1 .XX DECIMAL +/- 0.02 .XXX DECIMAL +/-0.005
ANGLES +/- 1 DEG SURFACE FINISH 128 microinch RMS

2751 Thunderhawk Court
Dayton, Ohio 45414-3445
U.S.A.
(937)890-1100
fax (937)890-5165
www.pavetechnologyco.com

PAVE technology co.

DESCRIPTION
PUSHTHRU & PLUG ASY 19 KT PIN

PART NUMBER
PT-1073

REVISION LEVEL
-

PROJECTION