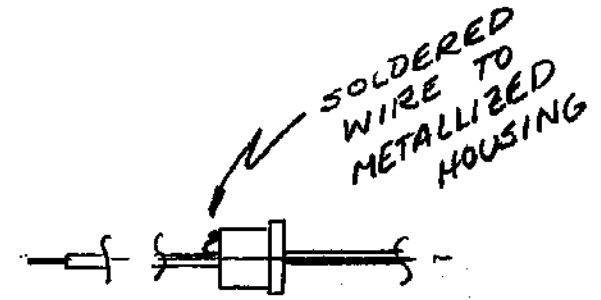
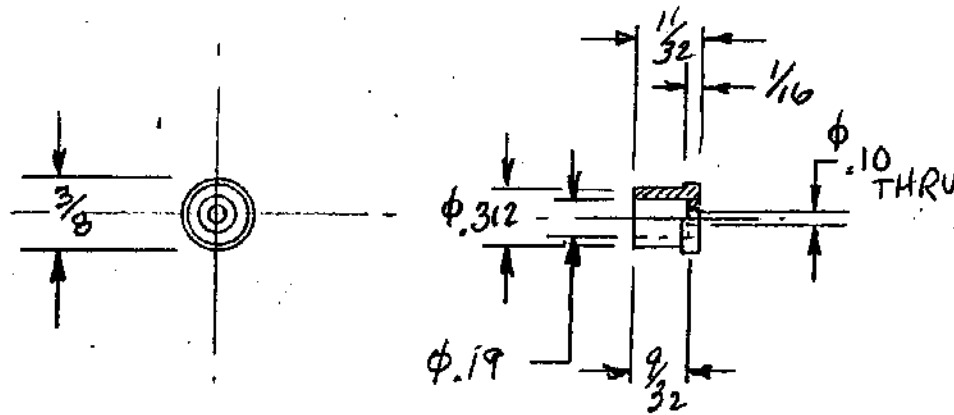


DO NOT SCALE PRINT

ISSUE LET.	ALTERATIONS	CHANGE NO.	DATE



FEEDTHRU ASSY

NOTE - OPTIONAL SOLDER TO I.D. OF HOUSING & ENCAPSULATE TO PROVIDE PROTECTION

- QUESTIONS:
1. FEEDTHRU ASSY MUST ELECTRICALLY CONNECT SHIELD TO HYDROPHONE? VIA SOLDER? MECHANICAL FIT?
 2. WHAT IS DESIRED SIZE? AS SHOWN? SMALLER? LARGER
 3. OTHER CABLING VERSIONS?

REAL

±0002

FINISH .0005 NICKEL PLATE BY AMERICAN CARCO

ALL DIM. AND TOLERANCES APPLY TO FINISHED PART UNLESS OTHERWISE SPECIFIED. ALLOWABLE TOLERANCES UNLESS OTHERWISE SPECIFIED - FRACTIONS ± 1/64 DECIMALS ± .005 ANGLES ± 1°

		PAVE Technology Co. Pressure and Vacuum Electronics Custom Hermetic Connectors	
TITLE AT & T HOUSING			
MATERIAL PLATEABLE ABS			
DR. BY <i>W. H. Lind</i>	APPROVED BY	DRAWN FROM	
CHD BY	DATE 3/6/87	SCALE 1/1	
PART NUMBER 0113			