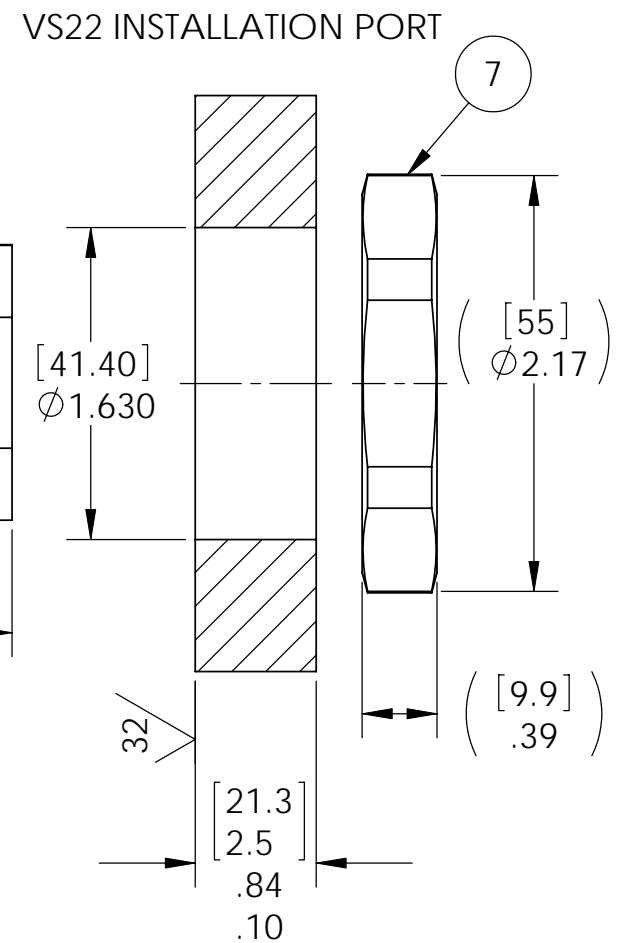
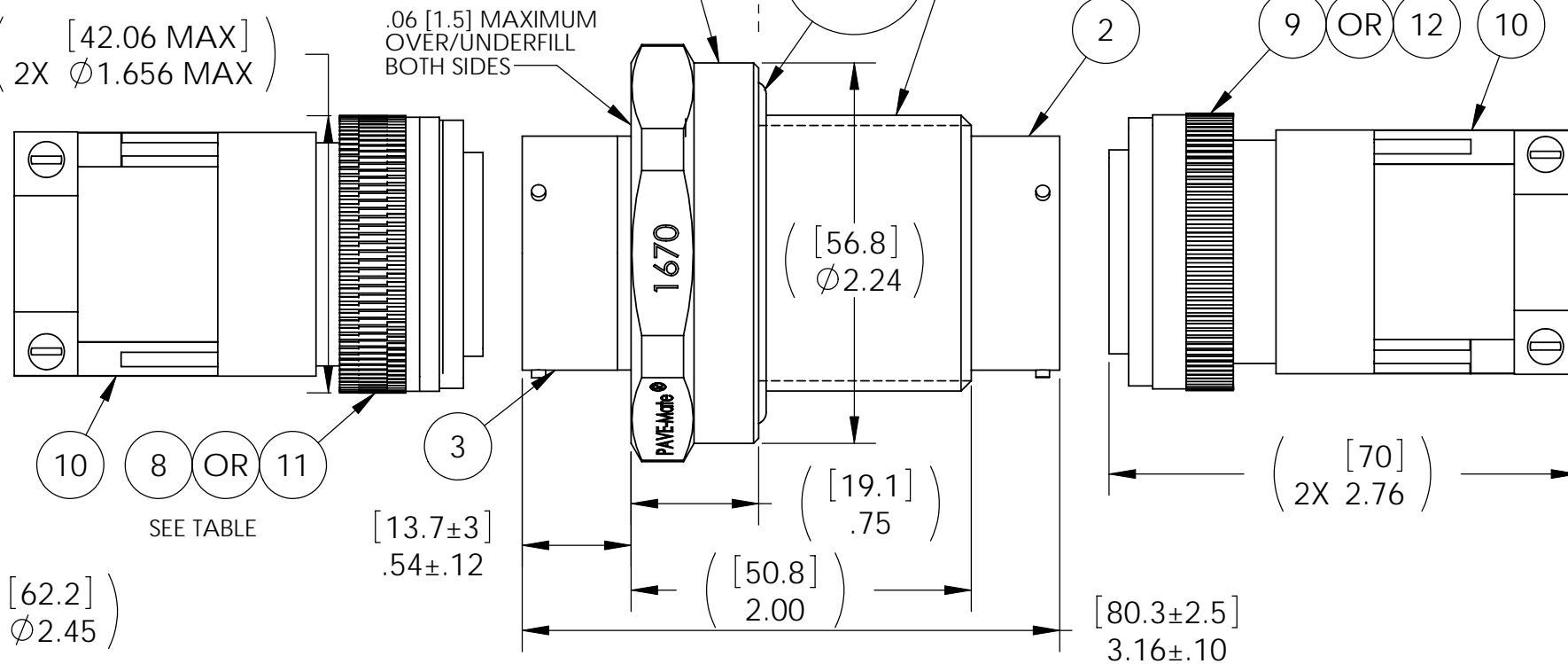
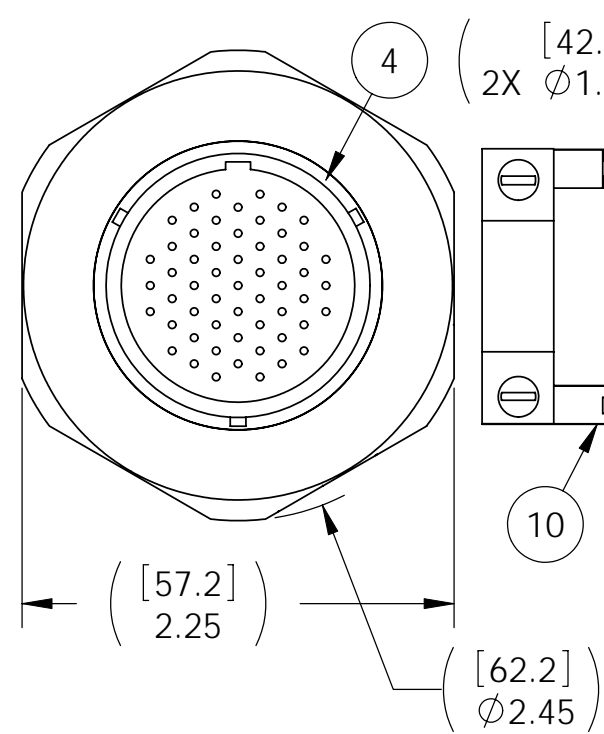


PART #	O-RING ITEM #	TEMPERATURE RANGE	SOCKET PLUG ITEM #	PIN PLUG ITEM #	STRAIN RELIEF ITEM #
1670	5	-20 TO 125 °C	8	9	10
1670-1	6	-60 TO 125 °C	8	9	10
1670SC	5	-20 TO 125 °C	11	12	INCLUDED W/PLUGS
1670EMI	5	-20 TO 125 °C	8	9	NOT INCLUDED



NOTES:

- LEAK TESTING, ALCOHOL OR FOMBLIN YVAC 3 MAY BE USED TO LUBRICATE O-RINGS FOR VACUUM HELIUM LEAK TESTING. A GREEN PAINT DOT INDICATES THE PART HAS PASSED THE TEST. TESTING PERFORMED AS FOLLOWS:
a.) 1670: HE LEAK TEST @ 1 ATM. 1×10^{-8} CC/S OR LESS.
b.) 1670-1: LEAK TEST @ 80 PSI, NO BUBBLES 30 SECONDS MIN.
c.) 1670SC: LEAK TEST @ 300 PSI, NO N2 BUBBLES 30 SECONDS MIN.
d.) 1670+PT: HE LEAK TEST @ 200 PSI, 1×10^{-4} CC/S OR LESS.
- HYPOT 1000 VDC 500 MEGOHMS MINIMUM 0.01 SECOND MINIMUM PIN TO PIN AND HOUSING WITH MATING CONNECTORS.
- CONTINUITY TEST: <0.5 OHM PIN TO SOCKET WITH MATING CONNECTORS.
- ALL TESTS ARE PERFORMED AT ROOM TEMPERATURE.
- ALL PARTS MUST PASS ALL TESTS.
- COSMETIC SURFACE VOIDS SMALLER THAN $\phi .035$ [0.89] ARE ACCEPTABLE.
- ALTERNATE CLOCKING (W,X,Y OR Z) IS INDICATED BY APPENDING THE APPROPRIATE LETTER TO THE PART NUMBER AND TO THE PAVE ORDER CODE. THE SAME LETTER IS THEN ADDED TO ITEMS 2 & 3 AND ITEMS 8 & 9, OR ITEMS 11 & 12, IF INCLUDED (E.G.: SC311E22-55PX).
- ADDING "NP" TO PART NUMBER & ORDER CODE INDICATES THAT ITEMS 8, 9, & 10 ARE NOT INCLUDED (NO PLUGS).
- ADDING "EMI" TO PART NUMBER & ORDER CODE INDICATES AN ELECTRICAL CONNECTION BETWEEN THE SHELLS OF ITEMS 2 & 3. ITEM 10 IS NOT INCLUDED (NO STRAIN RELIEFS). SHELL CONTINUITY TEST: <0.5 OHM WITH MATING CONNECTORS.
- DIMENSIONS ARE INCHES [millimeters].
- PAVE-SEAL CAN BE A BI-DIRECTIONAL HERMETIC SEAL FOR VACUUM AND MOST PRESSURES. FOR PRESSURES ABOVE 150 PSI (10 BAR), CHECK WITH SALES ENGINEERING.

ITEM	QTY	PART NUMBER	DESCRIPTION
12	1	SCPT06F22-55P	SEE TABLE PLUG 55#20 GOLD PLATED COPPER ALLOY SOLDER CUP PINS, NEOPRENE INSERT, NICKEL PLATED ALUMINUM SHELL & STRAIN RELIEF
11	1	SCPT06F22-55S	SEE TABLE PLUG 55#20 GOLD PLATED COPPER ALLOY SOLDER CUP SOCKETS, NEOPRENE INSERT, NICKEL PLATED ALUMINUM SHELL & STRAIN RELIEF
10	2	M85049/52-1-22N	SEE TABLE STRAIN RELIEF CLAMP SHELL SIZE 22, STRAIGHT, NON SELF-LOCKING, NICKEL PLATED ALUMINUM
9	1	AE776L22-55P513	SEE TABLE PLUG 55#20 GOLD PLATED COPPER ALLOY CRIMP PINS, EPOXY INSERT, NICKEL PLATED ALUMINUM SHELL
8	1	MS3476L22-55S	SEE TABLE PLUG 55#20 GOLD PLATED COPPER ALLOY CRIMP SOCKETS, RIGID DIELECTRIC INSERT, SILICONE GROMMET, NICKEL PLATED ALUMINUM SHELL
7	1	0199	NUT VS22-SS (316SS)
6	1	-224 BUTYL	SEE TABLE O-RING -224 BUTYL 75
5	1	-224 VITON	SEE TABLE O-RING -224 VITON 75
4	A/R	PAVE-Seal 150	EPOXY BLACK
3	1	SC3112E22-55P	RCPT 55#20 GOLD PLATED COPPER ALLOY PINS, NEOPRENE INSERT, NICKEL PLATED ALUMINUM SHELL
2	1	AE771L22-55S460	RCPT 55#20 GOLD PLATED COPPER ALLOY SOCKETS, EPOXY INSERT, NICKEL PLATED ALUMINUM SHELL
1	1	3388	HOUSING VS22-SS
ITEM	QTY	PART NUMBER	DESCRIPTION

PAVE technology co.
2751 Thunderhawk Court
Dayton, OH 45414-3445
U.S.A.
tel (937) 890-1100
fax (937) 8905165
www.pavetechnologyco.com

DESCRIPTION
VS22-SS-150-55-20-3112PS

PART NUMBER
1670

MATERIAL NOTED

REVISION LEVEL
P

PROJECTION

ALL DIMENSIONS AND TOLERANCES APPLY TO FINISHED PART IN INCHES.
ALLOWABLE TOLERANCES UNLESS SPECIFIED OTHERWISE: NONE ±0.5
X.X DECIMAL ±0.1 X.XX DECIMAL ±0.02 X.XXX DECIMAL ±0.005
ANGLES ±1 DEGREE SURFACE FINISH 128 microinch RMS