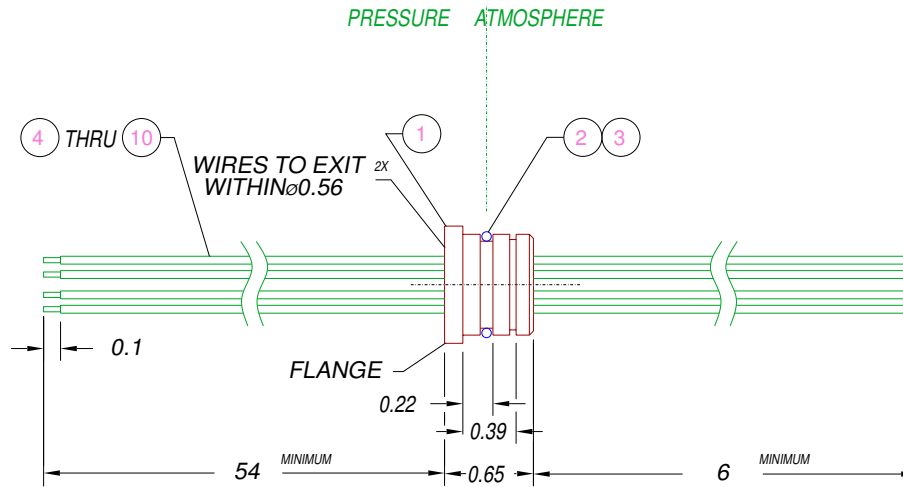
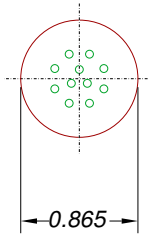
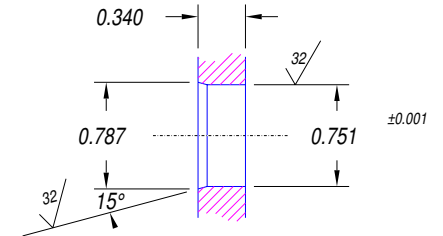


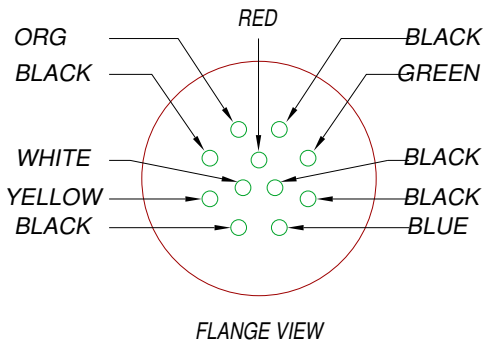
FLANGE VIEW



INSTALLATION PORT DIMENSIONS



Note: Wires will have a bend radius near 90 degrees on both sides of the connector.



NOTES:

1. LEAK TEST: 80 PSI, NO BUBBLES 3.5 MINUTES MIN.
2. HYPOT 630 VDC 500 MEGOHMS .01 SEC MINIMUM, WIRE TO WIRE & LEAK TEST PORT.
3. ALL TESTS ARE DONE AT ROOM TEMPERATURE.
4. REF- USE WITH TRUARC #N5000-75 RETAINING RING. NOT SUPPLIED
5. WIRE POSITIONS MAY VARY WITHIN NOTED 0.56 DIAMETER.

10	5@5'	E20 BLACK	WIRE 20E MIL-W-16878/4 .010 7/28
9	1@5'	E20 WHITE	WIRE 20E MIL-W-16878/4 .010 7/28
8	1@5'	E20 RED	WIRE 20E MIL-W-16878/4 .010 7/28
7	1@5'	E20 GREEN	WIRE 20E MIL-W-16878/4 .010 7/28
6	1@5'	E20 BLUE	WIRE 20E MIL-W-16878/4 .010 7/28
5	1@5'	E20 YELLOW	WIRE 20E MIL-W-16878/4 .010 7/28
4	1@5'	E20 ORG	WIRE 20E MIL-W-16878/4 .010 7/28
3	A/R	SUPER O-LUBE	LUBRICANT O-RING SILICONE-BASED
2	1	-016 VITON	O-RING -016 VITON 75
1	1	0130	HOUSING SPF12-E
ITEM	QTY	PART #	DESCRIPTION

ALL DIMENSIONS AND TOLERANCES APPLY TO FINISHED PART IN INCHES  
 ALLOWABLE TOLERANCES UNLESS SPECIFIED OTHERWISE: NONE +/- .5  
 .X DECIMAL +/- .1 .XX DECIMAL +/- .02 .XXX DECIMAL +/- .005  
 ANGLES +/- 1 DEG SURFACE FINISH 128 microinch RMS

PAVE technology co. 2751 Thunderhawk Court  
 Dayton, Ohio 45414-3445  
 U.S.A.  
 (937)890-1100  
 fax (937)890-5165  
 www.pavetechnologyco.com

DESCRIPTION PAVE-Sea® Cable Harnesses  
**SPF12-E-150-11-TE20-54-6**

PART NUMBER **2306** PROJECTION