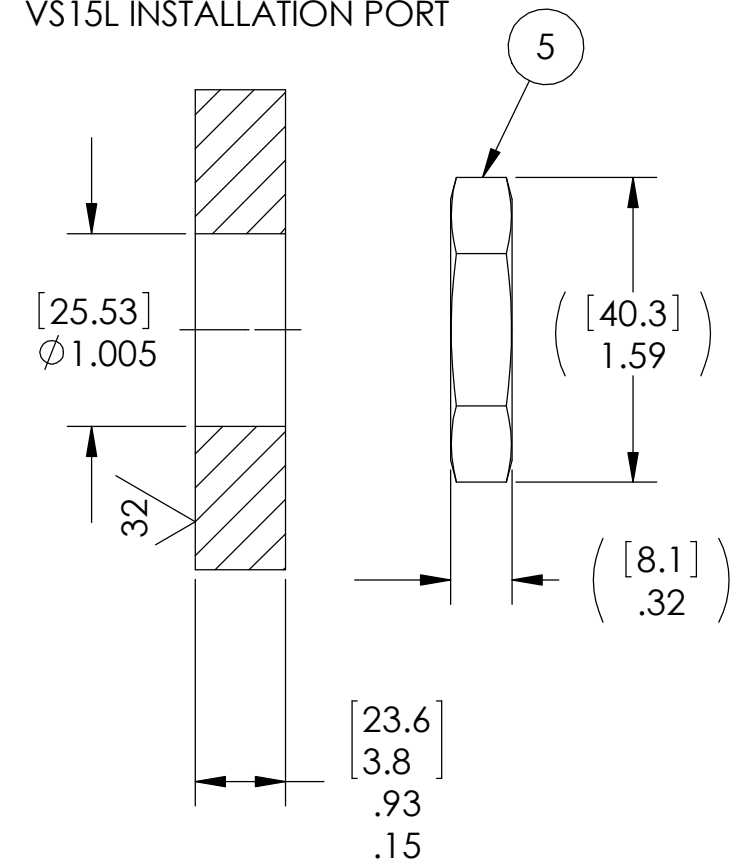


VS15L INSTALLATION PORT



NOTES:

1. HE LEAK TEST @ 1 ATM. 1×10^{-6} CC/SEC OR LESS. A GREEN PAINT DOT INDICATES THE PART HAS PASSED THE TEST.
2. HYPOT 630 VDC 500 MEGOHMS MINIMUM 0.01 SECOND MINIMUM PIN TO PIN AND HOUSING WITH MATING CONNECTORS.
3. CONTINUITY CHECK < 0.5 OHM CONTACT TO CONTACT AND SHELL TO SHELL WITH MATING CONNECTORS.
4. ALCOHOL OR FOMBLIN YVAC 3 MAY BE USED TO LUBRICATE O-RINGS FOR VACUUM HELIUM LEAK TESTING.
5. ALL TESTS ARE PERFORMED AT ROOM TEMPERATURE.
6. ALL PARTS MUST PASS ALL TESTS.
7. COSMETIC SURFACE VOIDS SMALLER THAN $\phi 0.035$ [0.89] ARE ACCEPTABLE.
8. REF-OPERATING TEMPERATURE -20°C TO 85°C .
9. DIMENSIONS ARE INCHES [millimeters].
10. PAVE-SEAL CAN BE A BI-DIRECTIONAL HERMETIC SEAL FOR VACUUM AND MOST PRESSURES. FOR PRESSURES ABOVE 150 PSI (10 BAR), CHECK WITH SALES ENGINEERING.
11. POSITION 1 IS CONNECTED TO POSITION 1, 2 TO 2, ETC. UNTIL POSITION 9 IS CONNECTED TO POSITION 9.

6	2	GSB412137CHR	RCPT USB A-TYPE 3.1 AMPHENOL OR EQUAL
5	1	0183	NUT VS15-SS
4	1	-215 VITON	O-RING -215 VITON 75
3	A/R	FIT-221L 1/2"	TUBING SHRINK LSZH POLYOLEFIN BLACK
2	A/R	PAVE-Seal 150	EPOXY BLACK
1	1	0161	HOUSING VS15L-SS
ITEM	QTY	PART NUMBER	DESCRIPTION

PAVE technology co.

2751 Thunderhawk Court
Dayton, OH 45414-3445
U.S.A.
tel (937) 890-1100
fax (937) 8905165
www.pavetechnologyco.com

DESCRIPTION
VS15L-SS-150-1-USBAfemale-USBAfemale USB3.1

PART NUMBER
4955

MATERIAL NOTED

REVISION LEVEL -

PROJECTION

ALL DIMENSIONS AND TOLERANCES APPLY TO FINISHED PART IN INCHES.
ALLOWABLE TOLERANCES UNLESS SPECIFIED OTHERWISE: NONE ± 0.5
X.X DECIMAL ± 0.1 X.XX DECIMAL ± 0.02 X.XXX DECIMAL ± 0.005
ANGLES ± 1 DEGREE. SURFACE FINISH 128 microinch RMS